

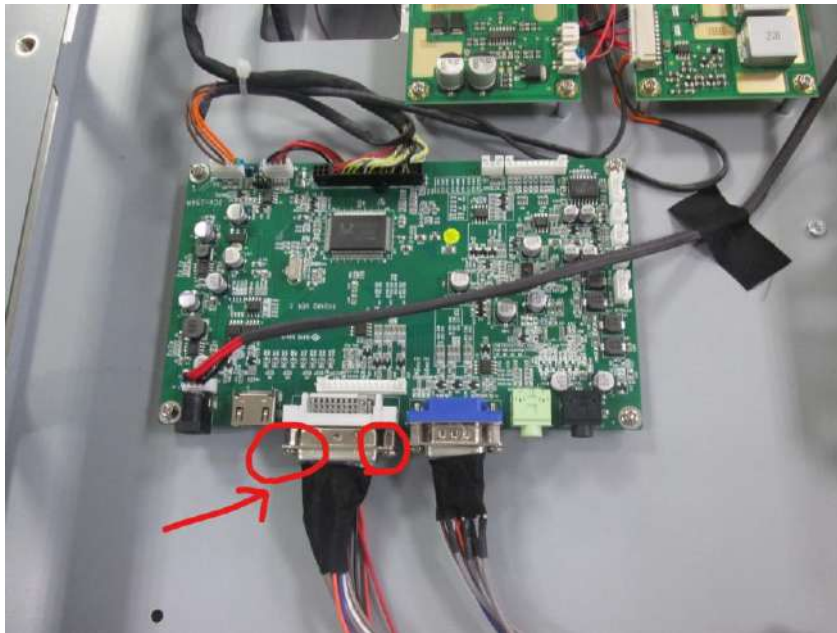
Replacement AD Board Instruction for CCH/SCH for SIP Series



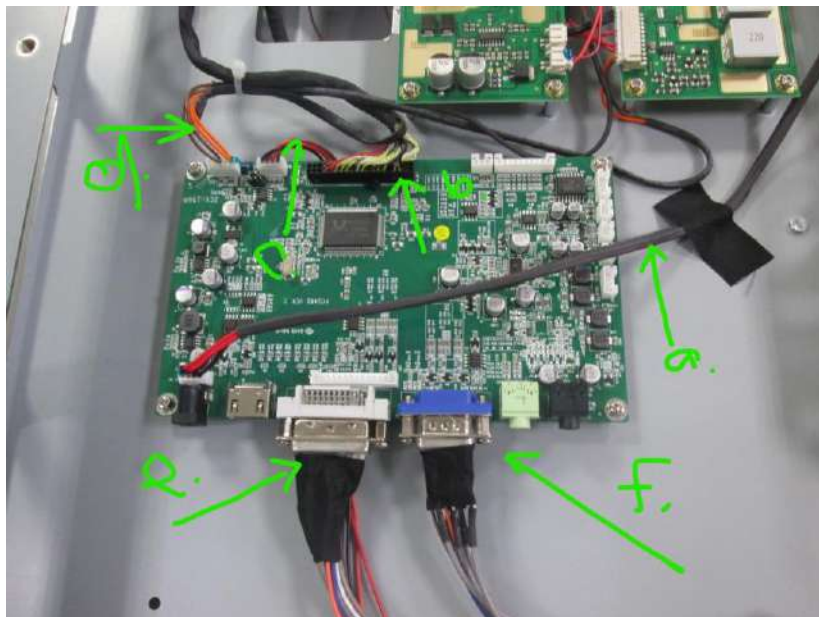
1. Loosed the stainless screws of the maintenance cover and removed the maintenance cover (with waterproof gasket)....blue portion



2. Loosed the waterproof cover (DVI) and loosed the nut of waterproof connector (DVI) by wrench....yellow portion



3. Loosed the screws (2EA) for each DVI and VGA connectors....red portion



4. Removed the above picture's cables and connectors....green portion
 - a. AD board 12VDC power cable
 - b. LVDS cable
 - c. Light sensor cable
 - d. Backlight cable
 - e. DVI and VGA inner waterproof connector
5. Replaced new AD board and DVI inner waterproof connector.