



Installation and set up

Multi-touch driver

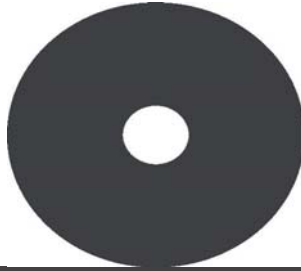
Multi-touch driver

Independent touches and gestures for your Windows Touch & custom applications

Installation instructions for Microsoft Windows

Installing the multi-touch driver - (MT2-64W)

The multi-touch driver software is available as a downloadable file. The driver software is also included on the touchscreen™ driver DVD.



Supported system platforms:
Windows Vista
Windows 7
(32bit/Mbit)

STEP 1

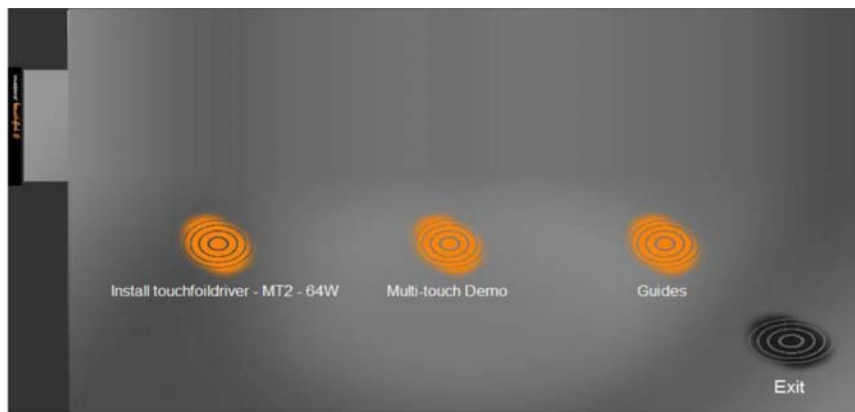
Insert the touchscreen™ driver DVD into your computer DVD drive. If the installation does not start automatically, navigate to the DVD drive, right-click the drive name and then do one of the following:

In Windows 7 or Windows Vista, click **Install** or **run the program**. In Windows XP, click **Autoplay**.

If you have downloaded the driver software, click **MT2Setup.exe** and follow the instructions on screen (skip steps 2 & 3).

STEP 2

Install menu:



If you wish the driver to automatically start after installation, click on the **launch driver** check box.



Click on **Install touchscreen driver**

- **MT2-64W** and follow the on-screen instructions. Once you have finished your installation, click on **exit** to exit the



STEP 3

To install the multi-touch demonstration program [if required], click on **Multi-touch Demo** and follow the on-screen instructions.



The **custom** multi-touch demonstration program is an easy-to-use application to demonstrate Pinch, Zoom, and Rotate gestures and the two independent touches, provided by the touchscreen™ multi-touch driver.

Set up

MuLti-touch driver

STEP 1

Starting the multi-touch driver

If you selected the driver to automatically start after the install then **left click** the system tray and then **double click** driver icon to bring the driver to the desktop

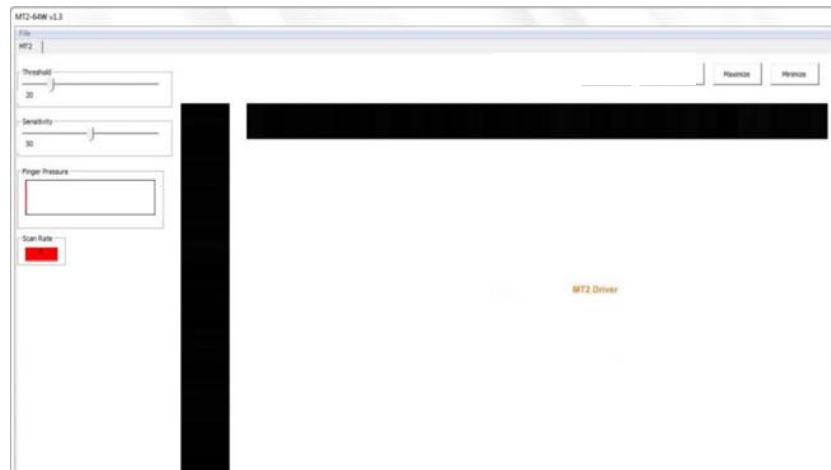
For manual start, click on the **desktop shortcut** to start the driver and then access from the system tray as described above



During the driver install process a **short cut** of the multi-touch driver is placed in the **start-up** folder, this enables the multi-touch driver to automatically start on system boot up.

If you do not require the driver to auto start, remove the driver short cut from the start up folder

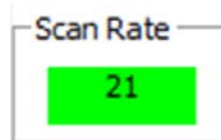
If the touchscreen™ is too sensitive you will see random white flashes in the X/Y bars when you are not touching the touchscreen™. Adjust the sensitivity/threshold levels as described in step 5 until the white flashes stop. Or if installing with an LCD increase the air gap between the LCD panel and the back of the touchscreen™ see installation tips on page 7 of this document



STEP 2

Communication

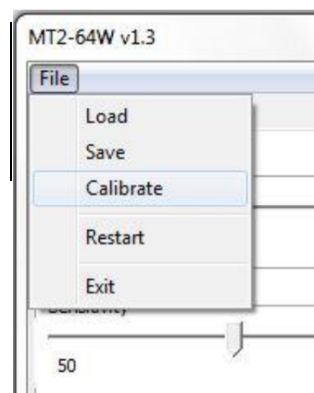
Connect the USB lead to the PC and touchscreen™ and check the scan rate box is green



STEP 3

Calibration

Select **File**, then click on **Calibrate Touch**, with your **finger**, each target in turn until the next one appears



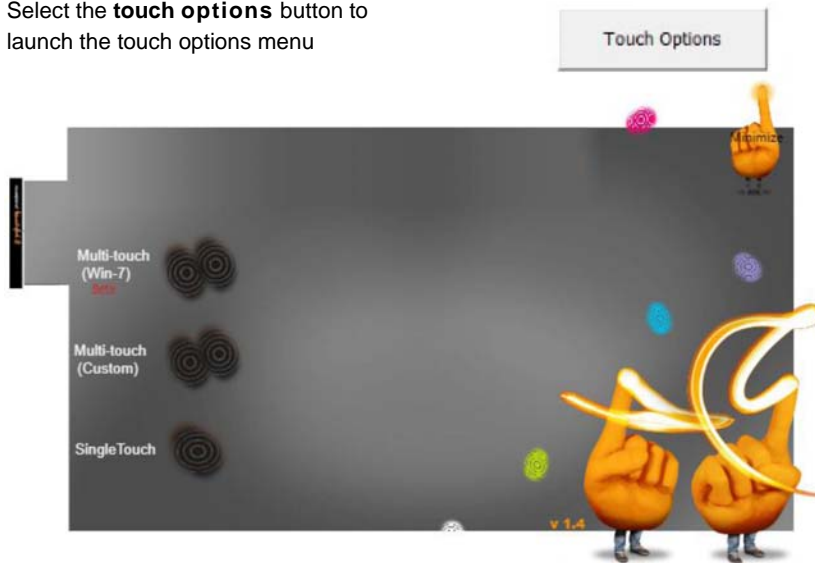
If the system will not calibrate check the single touch option is **not** selected. See Step 4



STEP 4

Touch Options

Select the **touch options** button to launch the touch options menu



Select the **Multi-touch (Win-7)** option to enable Windows 7 Touch capability. This option is not available on Windows XP and Vista

Select the **Multi-touch (Custom)** option for **custom** single and multi-touch applications

Select the **Single Touch** option for standard Windows single touch applications and touch control in Windows desktop. This touch option switches the touchscreen™ into standard mouse emulation control

Included on the DVD is a SDK, which provides APIs which will establish communication between touchscreen™ and **custom** multi-touch applications developed in C and C#. See SDK documentation for further details

Restart

Select the **Restart** button to restart the driver

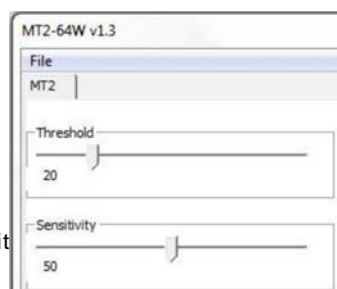


STEP 5

Threshold and Sensitivity Levels

Only adjust the sensitivity/press threshold levels if the touchscreen™ is either too sensitive or insensitive i.e. the touch is activated too far from the display or random touches occur when not touching the display or not responding to your touch

The driver default settings [threshold 20, sensitivity 50] through between 4-10 mm of material



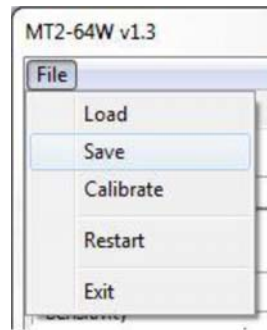
If adjustment is required, it is recommended to set the sensitivity level to half the level of threshold value

STEP 6

Saving the configuration settings

Select **File**

Click on **Save** to save the current settings



You **MUST** save the settings otherwise you will lose your setup when you close the multi-touch driver

For more details please go to our [visualplanet support page](#)

INSTALLATION TIPS

When installing the touchscreen™ with an LCD display an air gap is required between the back of the touchscreen™ and the LCD display. The recommended air gaps below can be affected by the quality of the LCD display, we would always recommend that industrial displays intended for digital signage are used.

The distance of the air gap is dependent on the size and quality of the LCD display. For example, a 40" touchscreen™ requires a 4-6mm gap and a 55" touchscreen™ requires a 6-10mm gap. The earth lead on the USB cable must be connected to a clean metal point on the LCD metal casing. This will reduce the interference that is caused by the LCD unit.

Route the touchscreen™ USB cable away from all mains, VGA and power supply cables

TROUBLESHOOTING

Random touches or touch activates too far from the display

Reduce sensitivity and threshold levels in small increments only, it is recommended to keep the sensitivity value at half the value of threshold as you make your adjustment. You should see no flickering on the X/Y touch indicators when you are not touching the display [top and side black bars) Only adjust the sensitivity/press threshold levels if the touchscreen™ is either too sensitive or non-responsive to your touch

Unable to find multi-touch driver control window

When you minimise the multi-touch driver it will move to the Windows system tray. To restore the multi-touch driver to the desktop left click on the icon present in the system tray

Application does not respond to multi-touch

Check your application has been developed to work with the touchscreen™ multi-touch function

Unable to use multi-touch gestures with the visualplanet multi-touch demonstration program

Check in the touch options menu that **Multi-touch [custom]** function has been selected

Unable to use touch in Windows desktop

Check **Single Touch** option is selected in touch options menu

Touch not tracking the finger

Check calibration, re-calibrate if required

Sensitivity levels are incorrect, increase sensitivity or reduce threshold levels as required