

Remove and Replace AD board & Inverter Instruction

Model: NPW9240K-TCB

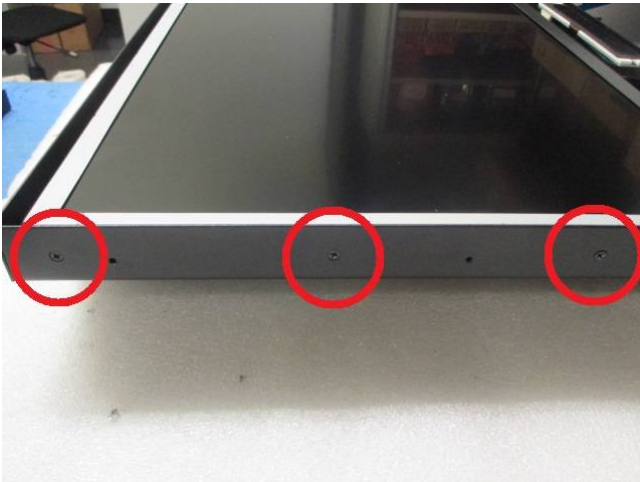


(1) Before your work, please make sure that **the power is disconnected.**

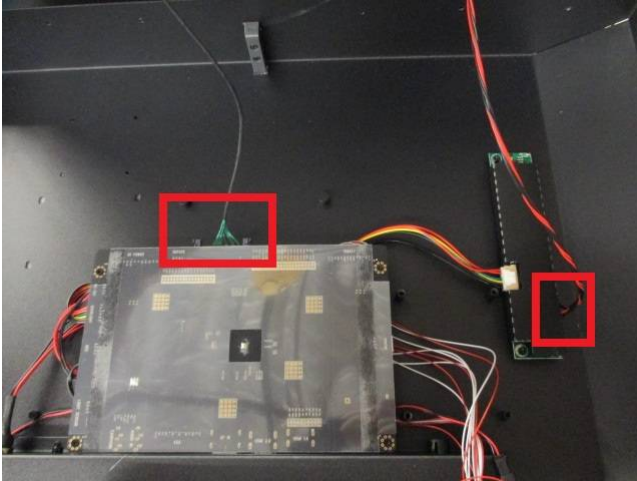
Step 1: Remove all the LCD panel screws (14 screws) then remove the LCD cover.



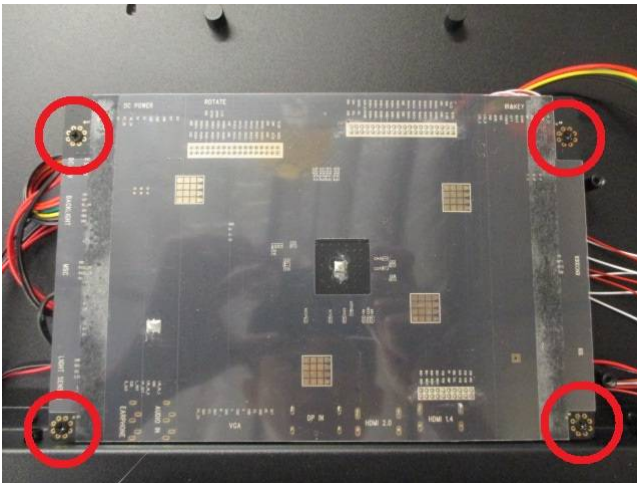
Step 2: Remove the LCD mounting screws (8 screws, 3 on each side, 2 on top).



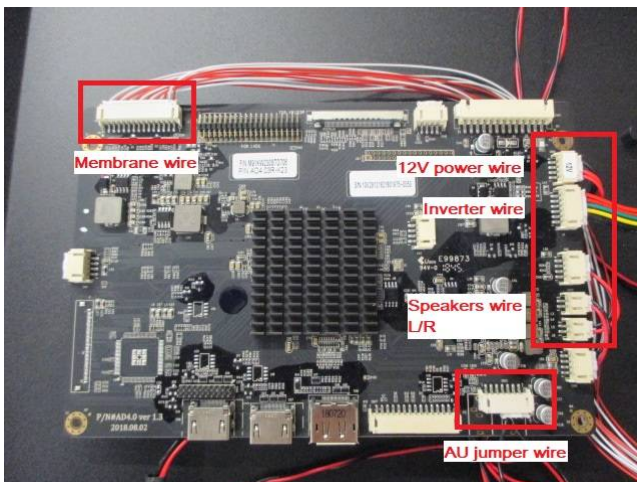
Step 3: Lift up the panel and disconnect the LVDS & inverter wire slowly and carefully for prevent the damage to both panel & wire, and remove the panel set out of its chassis.



Step 4: Remove these 4 screws to release the AD board.



Step 5: Flip over the AD board and disconnect all the connected wires, and then replace with new AD board.



~~~Follow the step backwards to complete assembly the unit~~~