

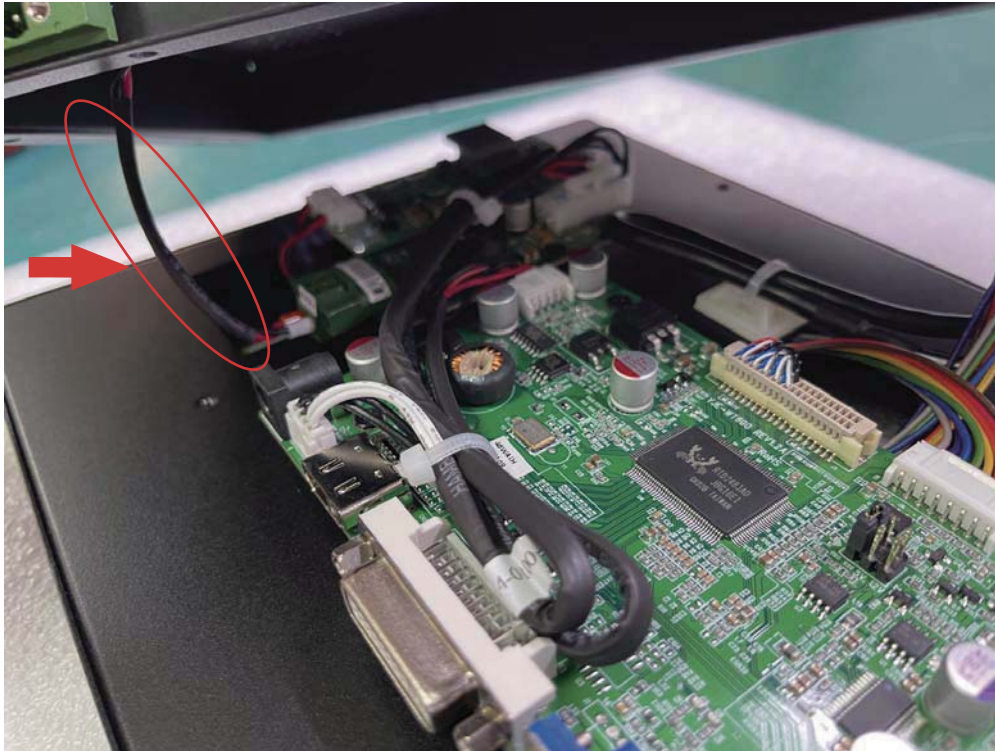
12.1" Chassis Touch LCD Monitor (Replace Touch Controller)

Replace Step:



- (1) Turn to rear side and unscrew 8 of countersunk
Screw please keep it aside. shows as picture

Replace Step:

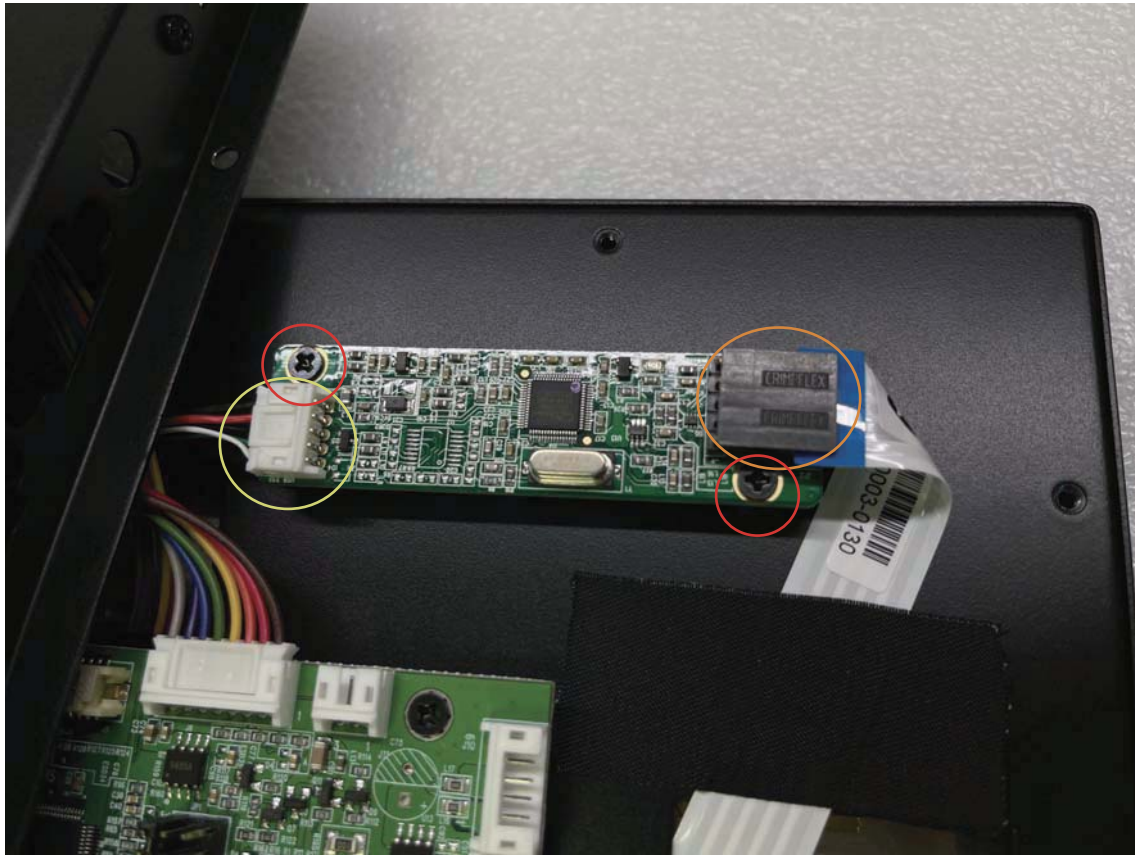


(2) Please take care of the short power cable and do not pull it loose.



(3) Put rear cover at left side, shows picture.

Replace Step:



(4) Disconnect of USB cable (yellow circle), FFC (orange circle), unscrew and take the broken controller board off.



(5) Rescrew the new controller board back

Replace Step:



(6) Reconnect USB cable and FFC back
(please pay attention to direction of cable)



(7) Put the rear cover back and do not press USB cable.

Replace Step:



(8) Rescrew 8 of countersunk screw back.



(9)Finished.