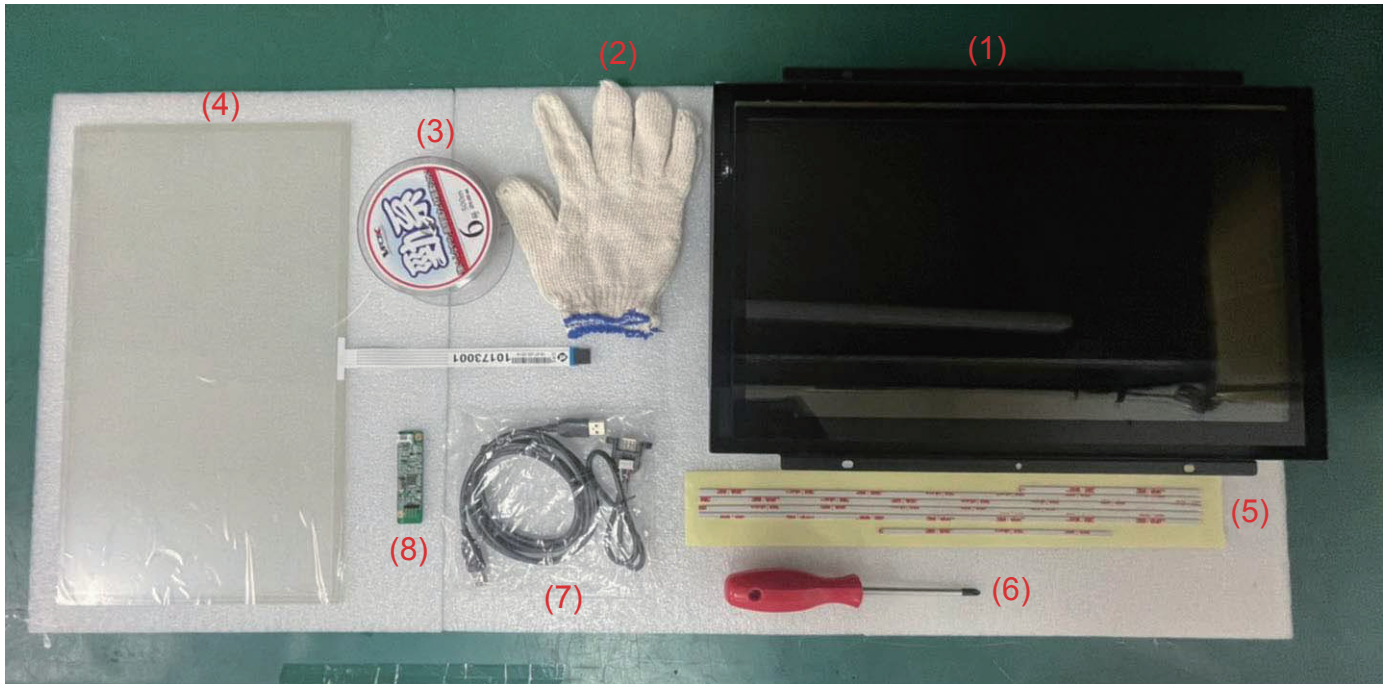

SPECIFICATION FOR APPROVAL

MODEL : 17.3" Open Frame Touch replacement SOP

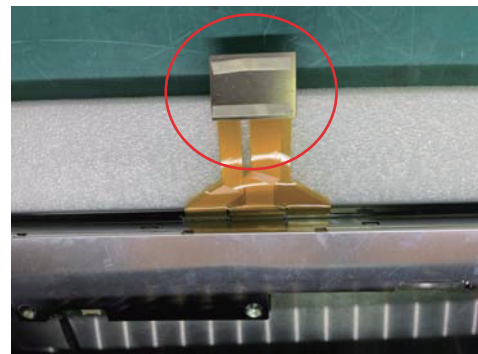
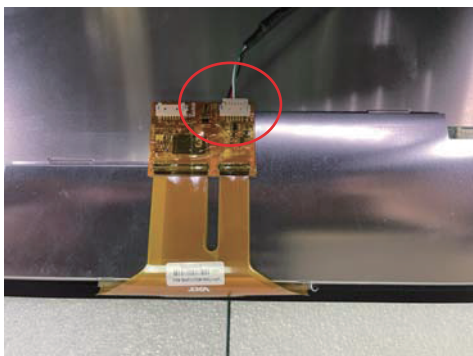


Tools :



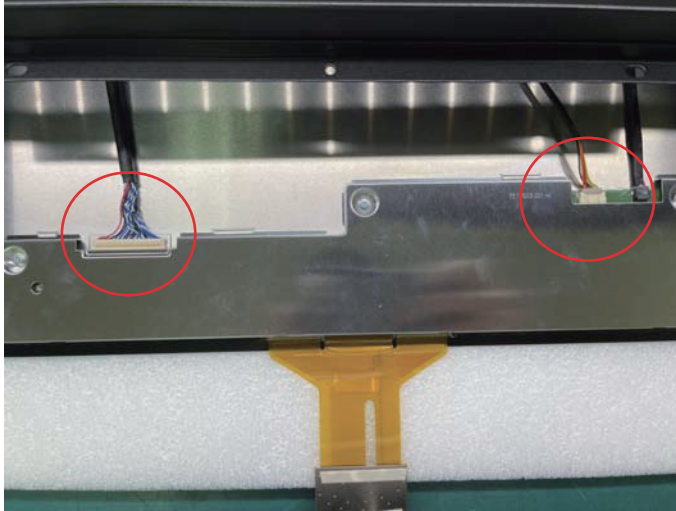
- (1) 17.3" Open Frame Touch LCD Monitor
- (2) Nylon gloves
- (3) Fishing line
- (4) Resistive touch
- (5) 3M double sided tape 1.55mm
- (6) Screwer
- (7) USB inner/outer connect cable
- (8) Touch controller

Replace Steps :



(2) Lift up middle housing and disconnected touch cable and controller from touch.

Replace Steps :



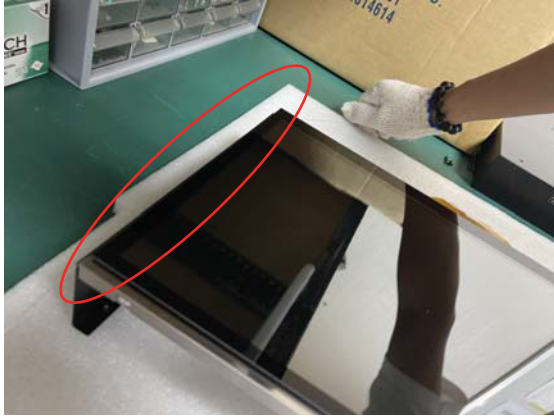
(3) Disconnect LCD and LED cable



(4) Take panel out from middle housing,
Use 200cm of fishing line then fold in half.
And put on nylon gloves.

Replace Steps :

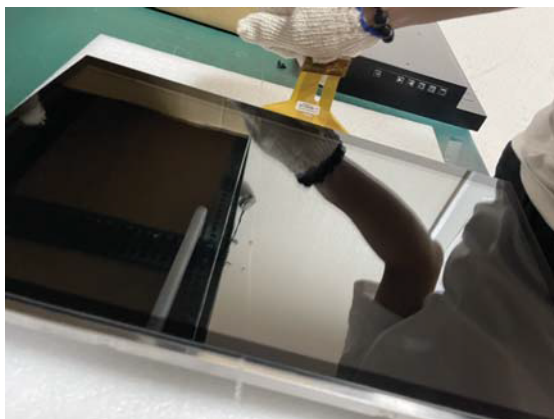
(A)



(B)



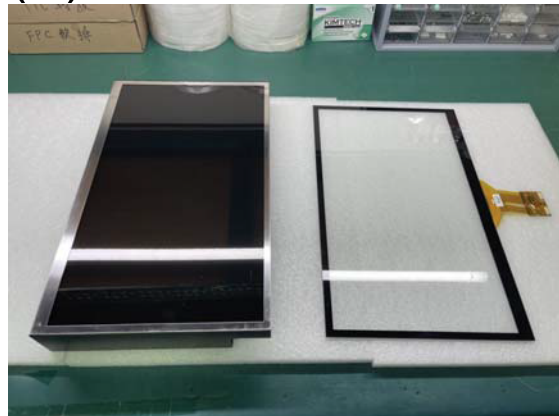
(C)



(D)

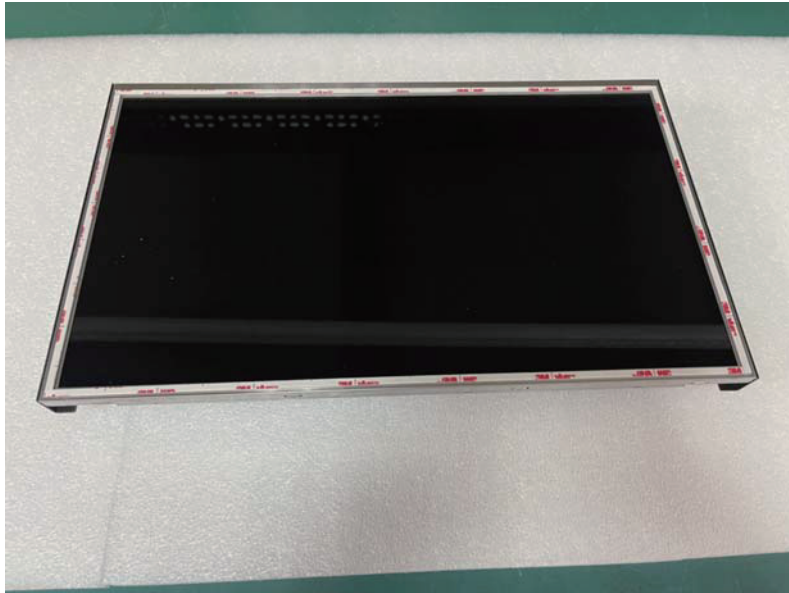


(E)



(5) Use fishing line to separate panel and touch from a side (A)
Then pull horizontal (B)
When pass by touch controller cable, lift it up and keep going.
Do not broken off cable (C)
Put touch aside, clean residue on surface of panel (E)

Replace Steps :



- (6) Paste double sided tape on square of panel surface
Place leave 2mm from side housing.

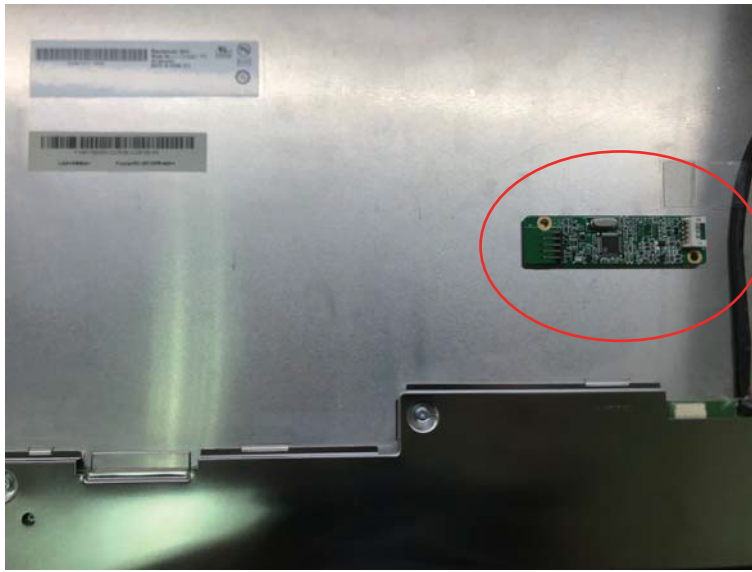


- (7) Bonding resistive touch and panel with carefully
(Correct direction is put cable at bottom side)
(Alignment the viewing area of touch and panel then bonding)

Replace Steps :



(8) Paste double sided tape on rear side of touch controller. shows as picture. Please paste with two tiers of tape on each.

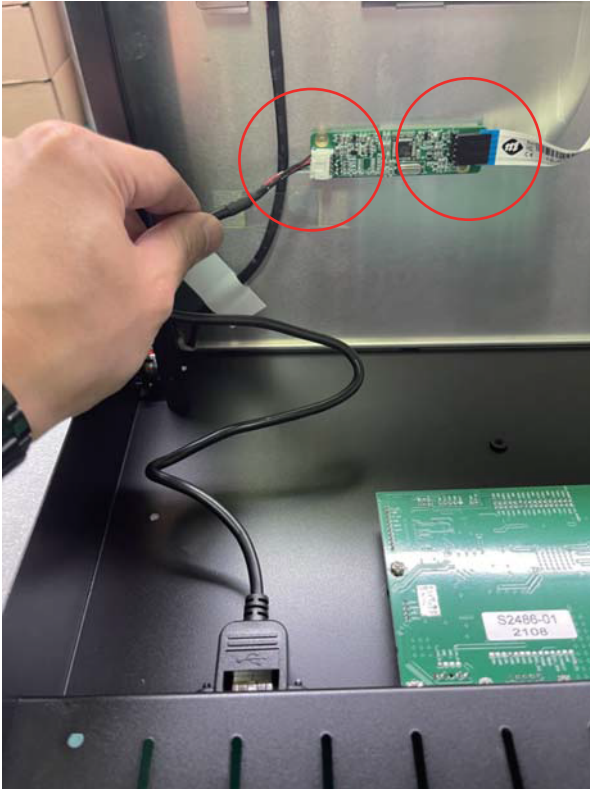


(9) Put touch controller on the bottom right side in rear of panel



(10) Disconnect old USB inner cable then replace with new cable.

Replace Step :



(A)

(11) Put panel back to middle housing
And reconnect touch cable and USB inner cable
to the touch controller. shows as (A)
Then reconnect LCD and LED cable to panel. (B)



(B)



(12) Turn monitor to rear side and screw back
All 6 countersunk flat head screws.



(13) Finished