

INDUSTRIAL PANEL MOUNT IP65 FRONT

Black Color Powder coating Metal Housing

High Brightness 32" LCD 1920*1080, 1500nits LED Backlight
Contrast Ratio 4000:1, 110/220V AC, Operating Temp -4F to 140F (-20C to 60C)
+Integrated Optical Bonding with AR 3mm glass



1500nits

Model: YPMW3200PHBOB-SW01-V2

FEATURES:

- High Contrast Color TFT-LCD Monitor Support Resolution up to 1920 x 1080.
- Light Sensor at front bezel top middle
- VGA + DVI + HDMI input
- Auto power and signal on/off
- One(1) Year Return to Depot Warranty
- Life time 50K hours, Operating Time 24 hours/Per day (Moving Pictures)
- One(1) Year Return to Depot Warranty

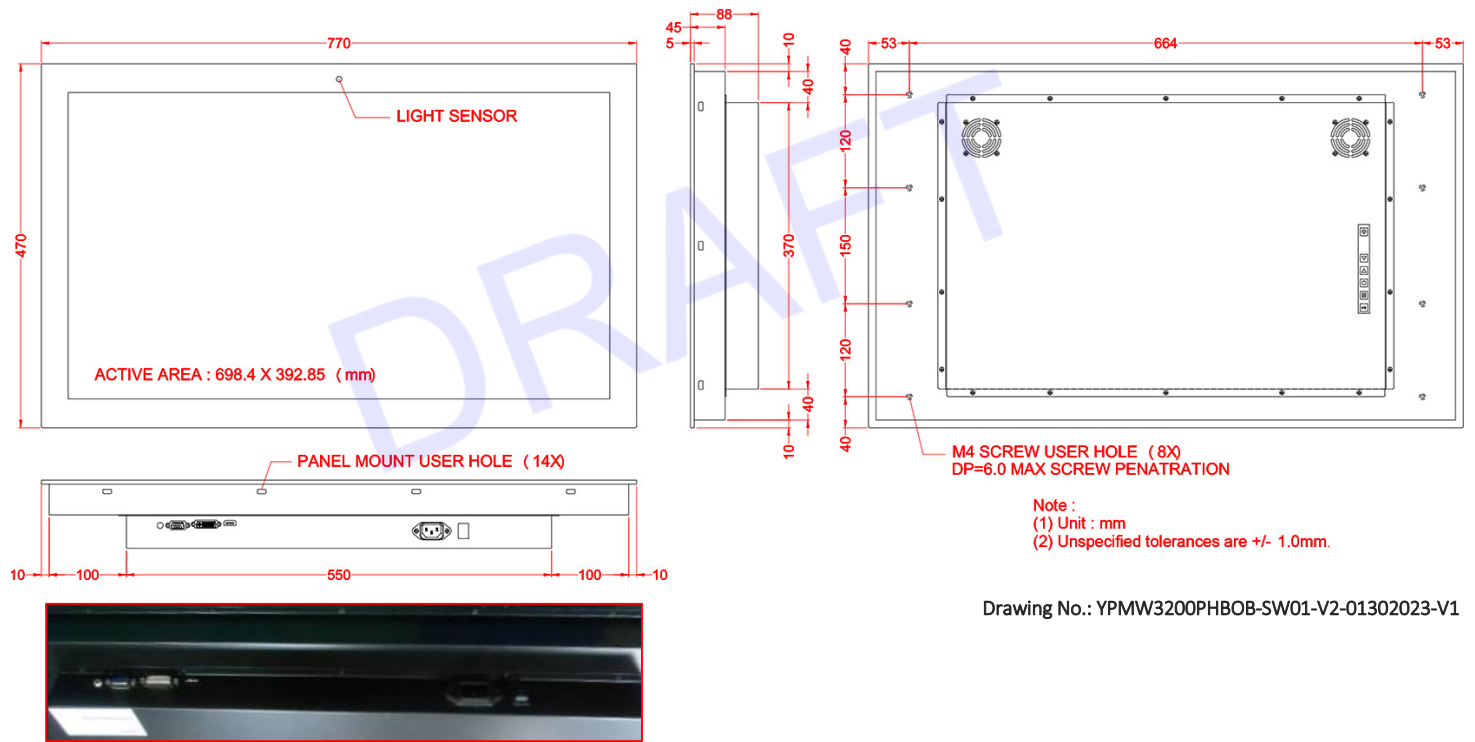
SPECIFICATIONS:

ITEM	SPECIFICATION
Panel Type	32.0-inch TFT LCD
Screen Diagonal	32.0-inch
Active Display Area (mm)	698.4 (H) x 392.85(V)
Pixel Pitch (um)	0.3637 (H) x 0.3637 (W)
Number of Pixels	1,920x1,080
Contrast Ratio	4000:1
Color Arrangement	R.G.B. Vertical Stripe
Brightness (cd/m ²)	1500 cd/m ²
Viewing Angle(Typ.)	89/89/89/89 (R/L/U/D)
Signal Connector	VGA, DVI, HDMI
Power Source	110/220V AC, Universal +/- 10%
Power Management	VESA DPMS Compliant
Operating Temperature	4F ~ 140F (-20C ~ 60C)
Plug & Play	VESA DDC 1/2B
Anti Shock	30G
Anti Vibration	1G (2-200Hz)

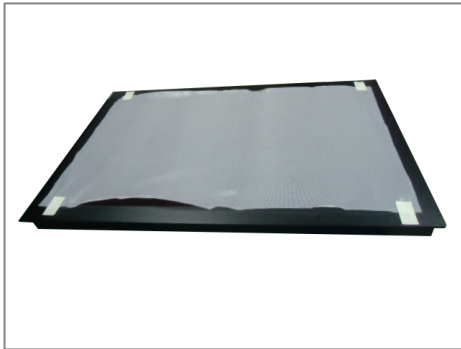
**Specifications subject to change without notice, not responsible for typographical errors.*

MECHANICAL DRAWINGS:

This is subject to change without Notice. Final Drawings Will be Provided for Approval after Order.



ACTUAL PICTURES – 03/06/25



Reference: SO# 121065