

Industrial IP65 Panel Mount LCD

Industrial LCD Monitor - with Aluminum Front Bezel

17" Panel Mount / 6mm Front Aluminum Bezel / 1280x1024 / 1500nits LED
Front IP65 / VGA+DVI+HDMI input / DC 12V Power Input / VESA Mount
2mm AR Coating Glass



1500 nits

Model: YPM1700PHB2-DH1

FEATURES:

- 17" SXGA TFT LCD with resolution up to 1280 x 1024.
- Suitable for military, tablet, ruggedized PC, kiosk, advertising, POS, marine, transportation, gaming, gas pump.
- Front Bezel IP65 (with glass or touch)
- Construction Front Panel - High quality aluminum bezel (anodic treatment)

SYSTEM SPECIFICATIONS

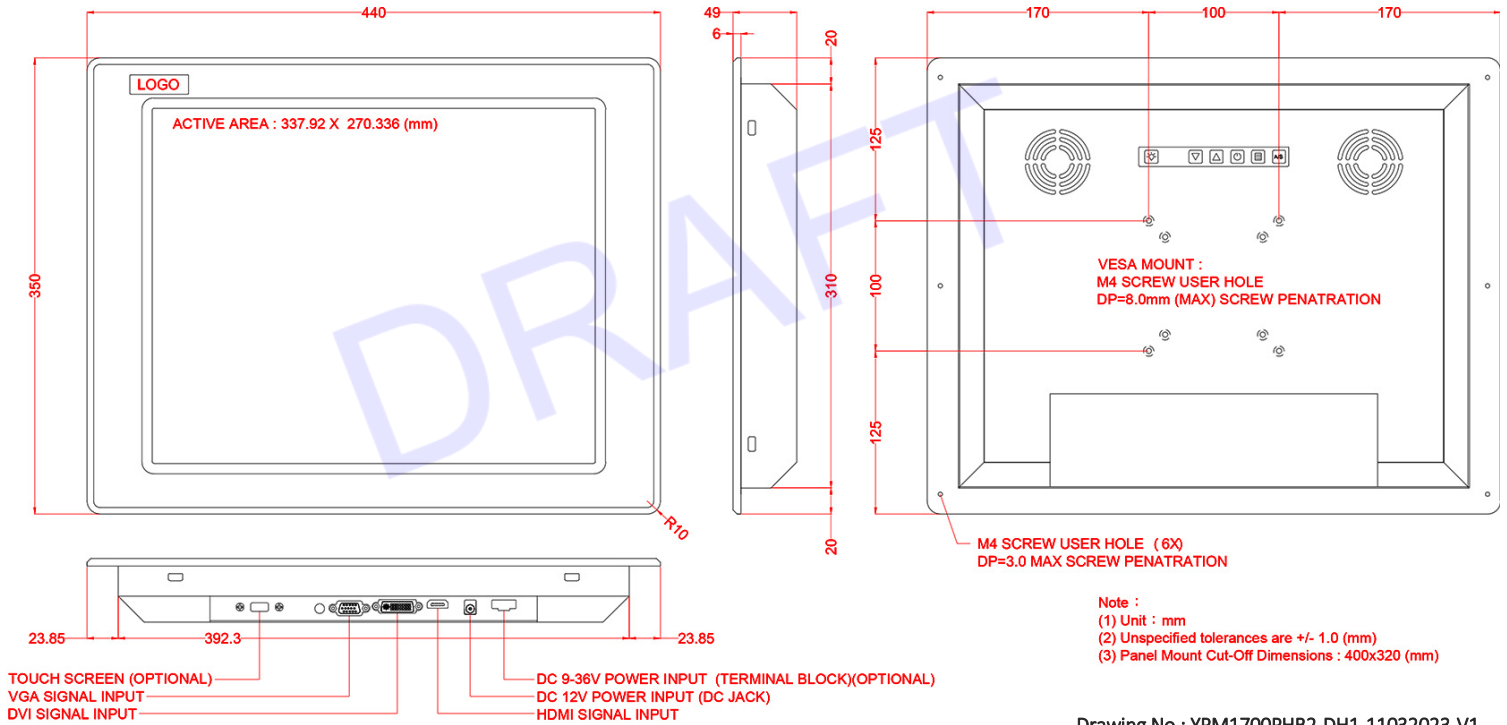
Display Type	17.0" TFT-LCD
Panel	
Display Color	16.7M colors
Brightness (cd/m ²)	1500nits
Display Resolution (pixel)	SXGA(1280 x 1024)
Viewing Angles (CR≥10)	80/80/60/80
Contrast Ratio	800 : 1
Backlight Unit	LED
Response Time (msec)	30ms
Environmental	
Operating Temperature	-30°C~80°C
Storage Temperature	-30°C~80°C

**Specifications subject to change without notice, not responsible for typographical errors.*

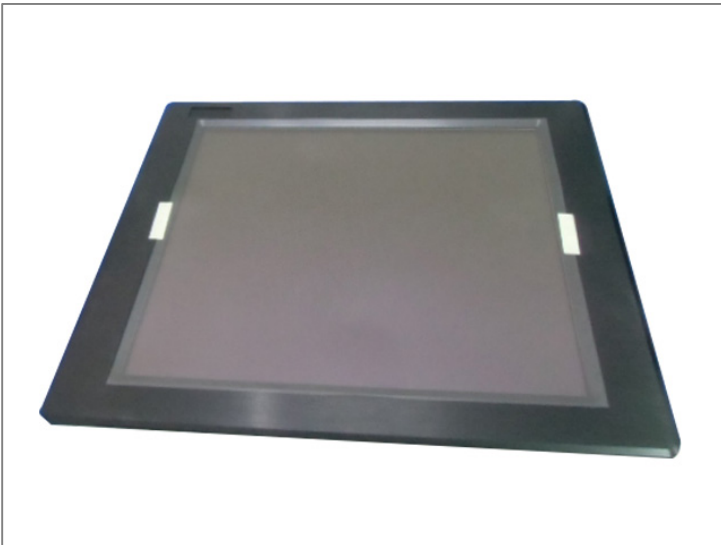
MECHANICAL DRAWING:

This is subject to change without Notice. Final Drawings Will be Provided for Approval after Order.

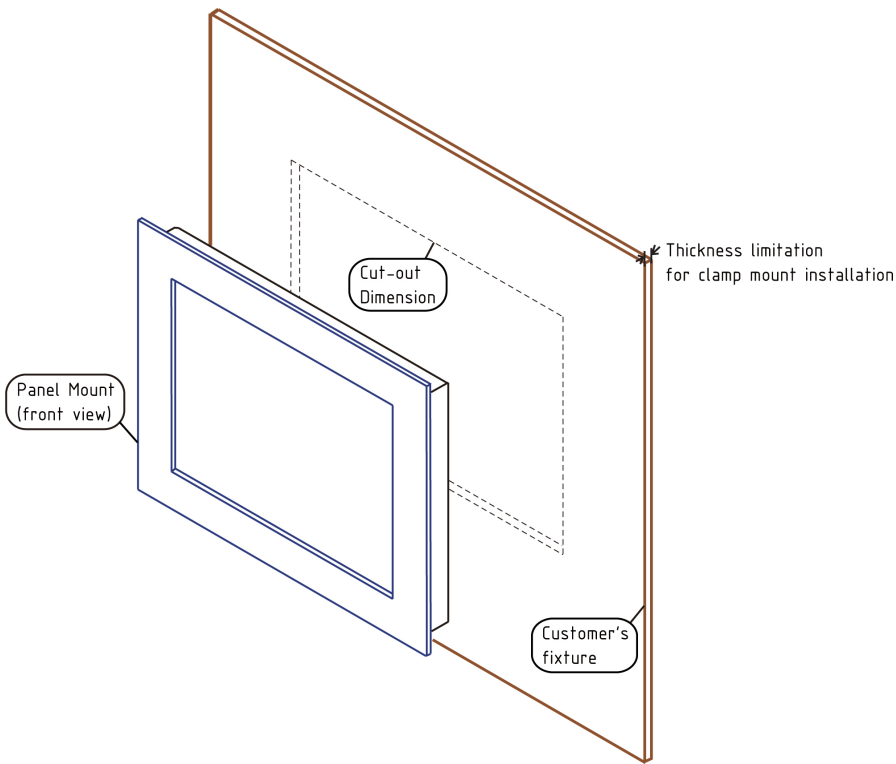
Unit:mm



Drawing No.: YPM1700PHB2-DH1-11032023-V1

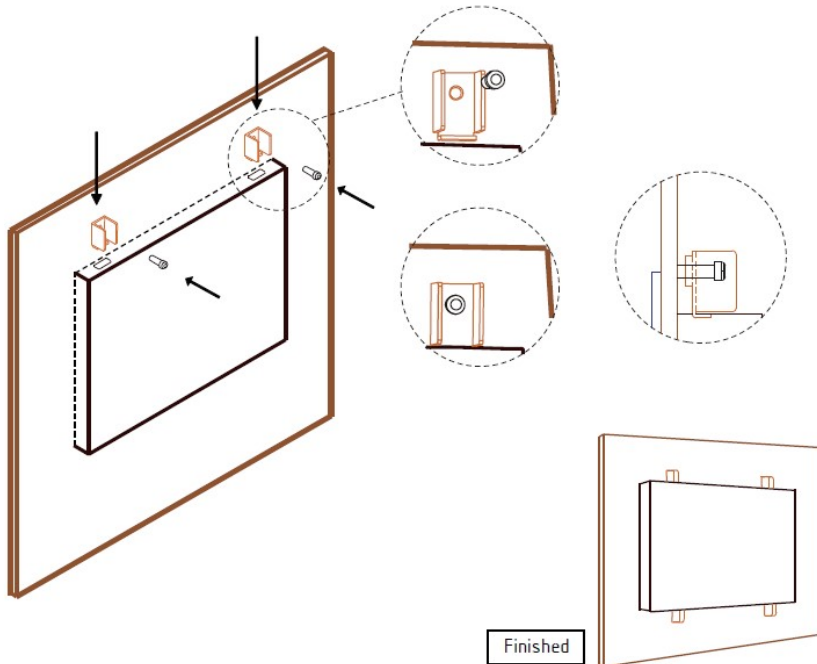


INSTALLATION GUIDE FOR PANEL MOUNT PRODUCT:



4. Installation:

4-1. Put the monitor in the cut out from the front side of the mounting wall. The best way to mount the panel is to align the bottom of the panel housing with the bottom edge of the cut out. This way can help hold the panel steadily.



1. Get the Mechanical Drawing :

You can get the mechanical drawing of your product model from our website: www.iTechLCD.com. If you can't find the correct mechanical drawing, Contact your local dealer.

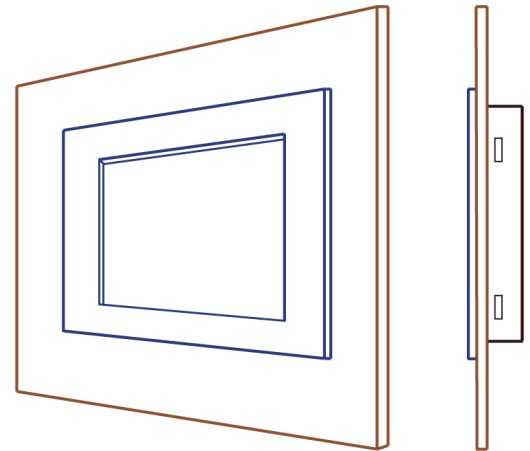
2. Make the cut out :

There is the cut out dimension in the Mechanical Drawing. Make sure your cut out meet the cut out dimension requirement. If the cut out is too small, there will be some interference. If the cut out is too big, you can't have the panel mounting securely.

Please note that there is thickness limitation of the mounting wall for panel mount installation.

3. Prepare the accessories :

For panel mounting kit installation, you will receive mounting kits and screws together with your unit and you have to prepare the screw driver by yourself. There are at least 2 mounting kits for each side of the panel. The mounting kit and the screw is paired.



4-2. At the back side of the mounting wall, insert the mounting kits into the side hole at the side bracket on the panel.

4-3. Put the screw on the mounting kits and screw it tightly.

4-4. Finish all the mounting kits one by one then you can have a secure installation for your Panel Mount product.