

FRONT IP65 SUNLIGHT READABLE 6MM ALUMINUM FRONT BEZEL TOUCH LCD



TRUE FLAT DESIGN 6MM ALUMINUM FRONT BEZEL

8.4" Touch Monitor / Front IP66 / True Flat design / 800x600 / 1000nits LED
VGA+DVI+HDMI Signal Input / PCAP Touch with USB controller
(10-points Touch in Windows 7,11) / Operating Temp.: -20 ~ +70C
Panel Mount / VESA Mount (75x75)(M4)



Model: YPM0840HB-FPCAP

FEATURES:

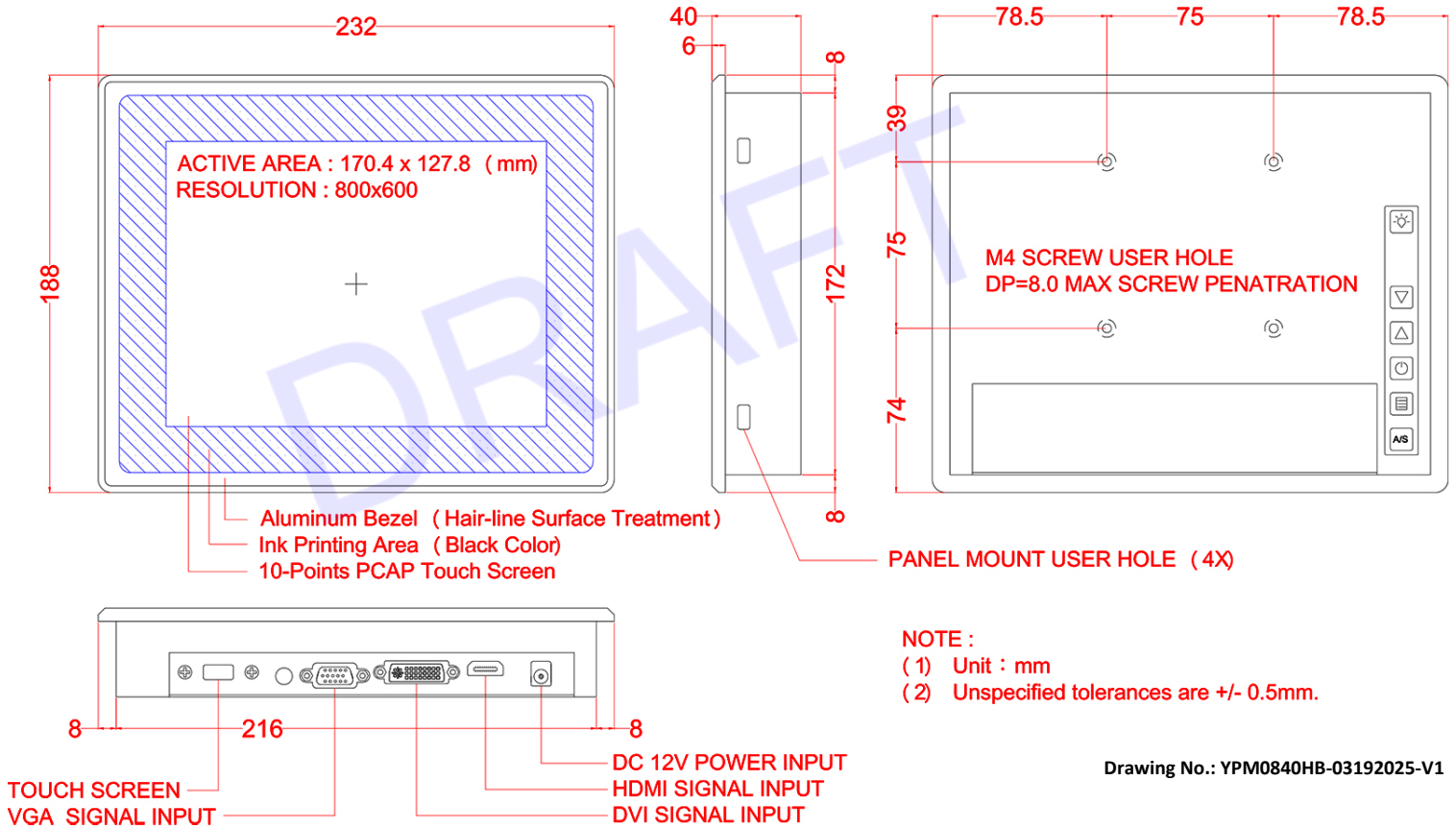
- 6mm Aluminum Front Bezel
- 8.4" touch monitor
- Front IP65-rated for water and dust resistance
- 800x600 resolution
- 1000 nits LED high brightness display
- VGA, DVI, and HDMI signal input compatibility
- PCAP touch with USB controller (supports 10-point touch in Windows 7 and 11)
- Panel mount support
- VESA mount (75x75) with M4 screws

SYSTEM SPECIFICATIONS	
Panel Type	8.4-inch TFT LCD
Screen Diagonal	8.4-inch
Active Display Area (mm)	170.4 (H) x 127.8 (V)
Pixel Pitch (mm)	0.213 x 0.213
Number of Pixels	800 x 600
Contrast Ratio	600:1
Color Arrangement	R.G.B. Vertical Stripe
Brightness (cd/m ²)	1000 cd/m ²
Viewing Angle(Typ.)	80/80/80/60 (R/L/U/D)
Signal Connector	VGA + DVI + HDMI
Power Source	DC 12V
Power Consumption	2.16watts, normal operation
Power Management	VESA DPMS Compliant
Operating Temperature	-20 ~ 70°C
Storage Temperature	-20 ~ 60°C
Plug & Play	VESA DDC 1/2B
Transparency	> 80% (typ.)
Hardness of surface	3H
Linearity	±1.5%(max.)

**Specifications subject to change without notice, not responsible for typographical errors.*

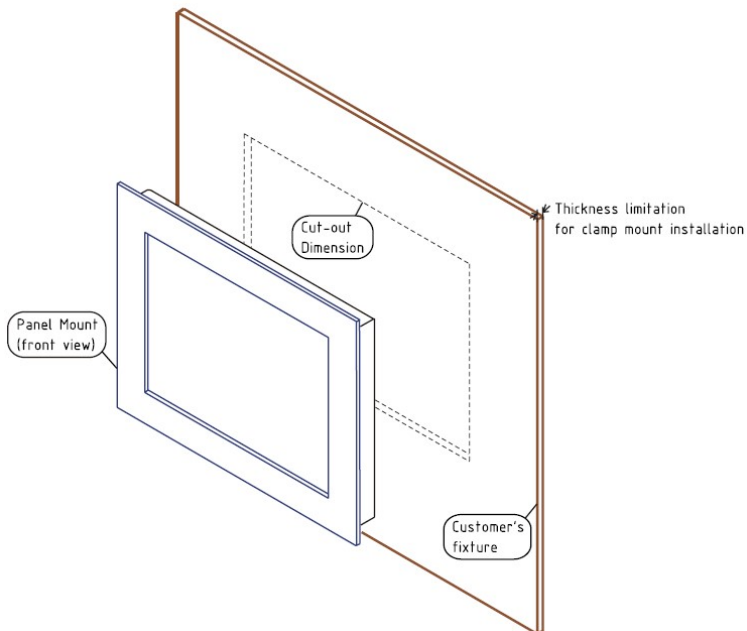
MECHANICAL DRAWING:

This is subject to change without Notice. Final Drawings Will be Provided for Approval after Order.



Drawing No.: YPM0840HB-03192025-V1

PANEL MOUNT - INSTALLATION GUIDE



1. Get the Mechanical Drawing:

If you can't find the correct mechanical drawing, email us at Info@iTechLCD.com

2. Make the cut out:

There is the cut out dimension in the Mechanical Drawing. Make sure your cut out meet the cut out dimension requirement. If the cut out is too small, there will be some interference. If the cut out is too big, you can't have the panel mounting securely. Please note that there is thickness limitation of the mounting wall for panel mount installation.

3. Prepare the accessories:

For panel mounting kit installation, you will receive mounting kits and screws together with your unit and you have to prepare the screw driver by yourself. There are at least 2 mounting kits for each side of the panel.

Note : You better have at least 2 people to do the installation. One is at the front side of the mounting wall, another is at the back side of the mounting wall.

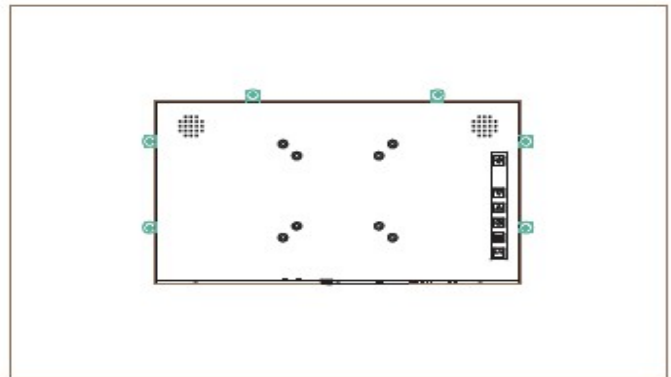
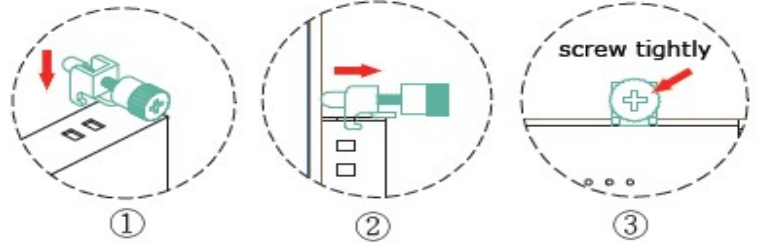
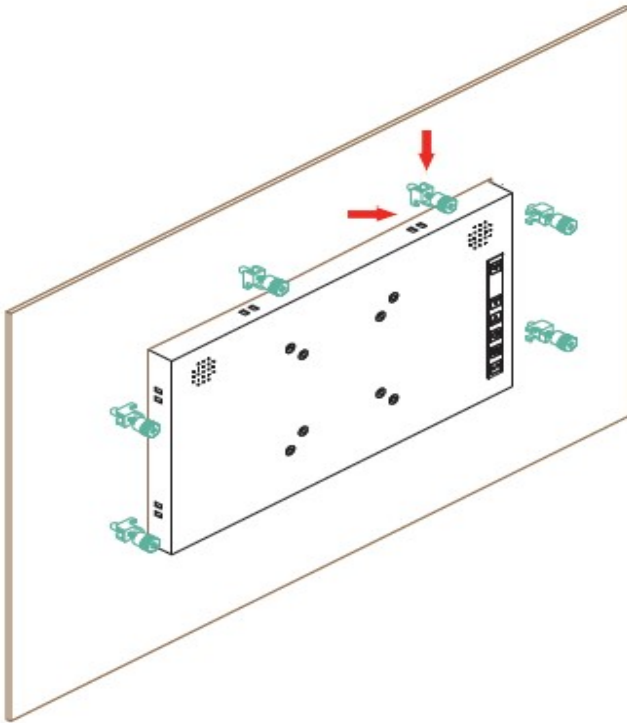
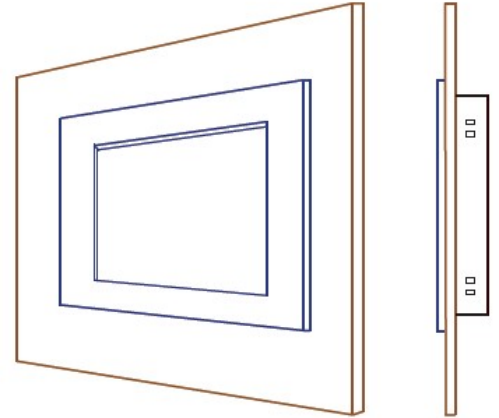
4. Installation:

4-1. Put the monitor in the cut out from the front side of the mounting wall. The best way to mount the panel is to align the bottom of the panel housing with the bottom edge of the cut out. This way can help hold the panel steadily.

4-2. At the back side of the mounting wall, insert the mounting kits into the slide hole (As shown in the following figure ① ②).

4-3. screw tightly on the mounting kits(As shown in the following figure③).

4-4. Finish all the mounting kits one by one then you can have a secure installation for your Panel Mount product.



Finished