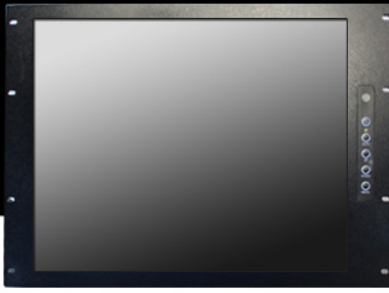


8U RACK MOUNT LCD MONITOR



8U 19" 1280 x 1024, 250 nits rack mount LCD monitor AtoD Board
(Model: DA005) OSD Control HDMI, VGA, CVBS-in(BNC)x2
CVBS-looping(BNC)x2, Audio (PIP) VESA Mounting & Built in Power
Supply OSD on Front bezel right side

Model: MRP8190

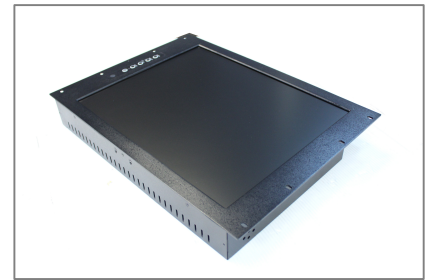
FEATURES HIGHLIGHT

- Modularize mechanical design provides flexible product configuration and easy maintenance
- Optional build-in touch screen for interactive application
- Available with auto-brightness sensor offers application in day and night
- Complete custom design/solution for OEM customers
- Auto Power On: Monitor is always "ON" when connect to power.
- Auto Video Signal On: Monitor (Backlight) will turn off when no video signal, but it will Auto turn back on.

SPECIFICATIONS

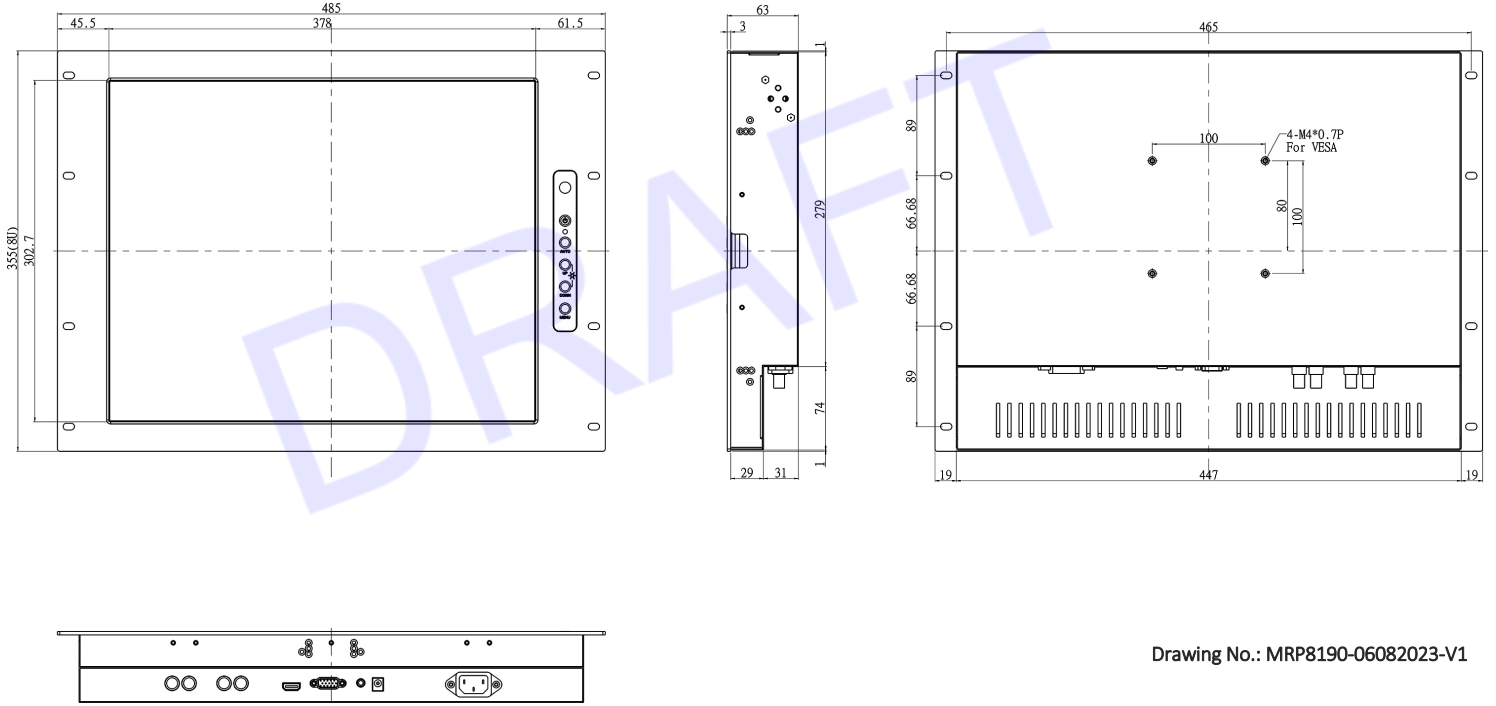
Panel	Cell Type / Glass Surface	TFT LCD / Black Anti-Glare, low reflection coating
	Aspect Ratio / Size	4 : 3 / 19" viewable diagonal area
	Active Area / Pixel Pitch	376.3(H) x 301.1(V) mm / 0.294(H) x 0.294(V) mm
	Native Resolution / Colors	1280(H) x 1024(V) / 16.7 M
	Brightness / Contrast	250 cd/m ² (typ) / 800 : 1
	Response Time	≤ 5 ms
	Viewing Angle (typical)	H. 170° (- 85° ~ + 85°) , V. 160° (- 80° ~ + 80°)
	Light Source	LED backlight, Long life, 35,000 hrs (typ)
Input Sources	HDMI, VGA, CVBS-in(BNC)x2, CVBS-looping(BNC)x2, Audio (PIP)	
Convenient Features	Auto Calibration , Back Light Adjustment , Plug&Play (VESA DDC/CI, DDC 2B)	
	OSD Multi-Languages , Wall Mount Ready (VESA Dimension - please refer to Drawing)	
Power	Internal power supply with universal / Auto-Sensing, AC90 to 260V, 50/60 Hz	
Power Consumption	Operation / Power Saving	32.5 watt , < 2 watt (Support DPMS)
Operating Condition	Temperature / Humidity	0°C ~ 50°C (32°F ~ 122°F) , 10% ~ 90% (no condensation)
Storage Condition	Temperature / Humidity	- 20°C ~ 60°C (- 4°F ~ 140°F) , 10% ~ 90% (no condensation)
Certification	FCC , CE	
Dimensions	Physical	Please refer to Drawing
	Carton	W x H x D = TBD
Weight	N.W. / G.W.	6 Kgs / 7 Kgs
Container Loaded	20ft / 40ft / 40ft HQ	TBD (Sets , By pallet)

**Specifications subject to change without notice, not responsible for typographical errors.*



MECHANICAL DRAWINGS

This is subject to change without Notice. Final Drawings Will be Provided for Approval after Order.



Drawing No.: MRP8190-06082023-V1