

IP65 FRONT PANEL MOUNT (METAL-5MM)

24" LCD Monitor, 1920x1200, 400 nits, VGA+DVI+HDMI, Side OSD including rear screw/Clamp/VESA Mount with 5 Wire Resistive Touch Screen and USB Controller Integrated IP65 Front Panel Al-5mm, Integrated DC 9-36V Input (Built-in). Terminal Block "+" and "-".

MODEL: EPMW2400IP-TR-DC-CA01

FEATURES:

- Front side sealed to IP65 for water and dust resistance
- Flexible modular mechanical design allows for easy product configuration and maintenance
- Option for built-in touch screen for interactive applications
- Includes auto-brightness sensor for day and night use
- VGA connector with optional AV, SV, and AV-Looping capabilities
- Option for IP66/IP69K front side protection

SPECIFICATIONS:

Cell Type	TFT LCD
Glass Surface	Black Anti-Glare, low reflection coating
Aspect Ratio	Wide
Size	24.1" viewable diagonal area
Active Area	518.4(H) x 324.0(V) mm
Pixel Pitch	0.27(H) x 0.27(V) mm
Native Resolution	1920(H) x 1200(V)
Colors	16.7 M
Brightness	400
Contrast	1000 : 1
Response Time	≤ 14 ms (G-to-G)
Viewing Angle (typical)	H. 178°(- 89°~ + 89°) , V. 178°(- 89°~ +89°)
Light Source	LED backlight, Long life, 35,000 hrs (typ)

INPUT SOURCES		
PC System	Signal	Analog RGB (0.7/1.0 V, 75 ohms)
	Sync	Separate Sync, Composite Sync, Sync On Green
	Frequency	F: 30 - 82Khz , F: 50 -75Hz
Audio System	2W speaker x 2	

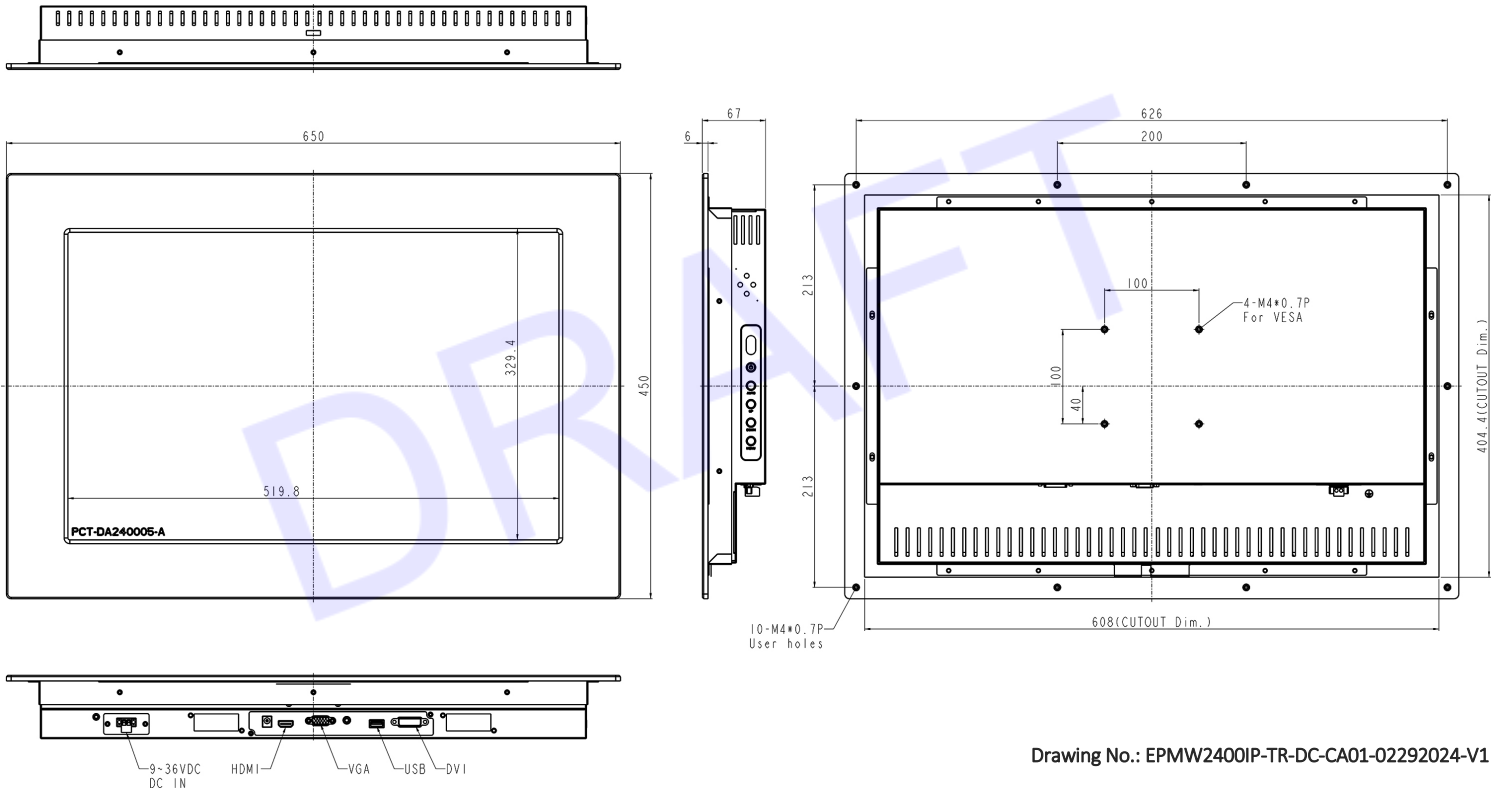
***Specifications subject to change without notice, not responsible for typographical errors.**

CERTIFICATION	
FCC , CE	
INPUT TERMINALS	
1 x VGA, 1 x HDMI, 1 x 1 DVI, 1 x PC Audio (Stereo Headphone Jack) , 1 x DC Power Plug	
CONVENIENT FEATURES	
Auto Calibration , Back Light Adjustment , Plug&Play (VESA DDC/CI, DDC 2B) , OSD Multi-Languages , Wall Mount Ready (VESA Dimension - please refer to Drawing)	
POWER	
Integrated DC 9-36V Input (Built-in). Terminal Block "+" and "-".	
POWER CONSUMPTION	
Operation / Power Saving	26 watt , < 1 watt (Support DPMS)
OPERATING CONDITION	
Temperature / Humidity	0°C ~ 50°C (32°F ~ 122°F) , 10% ~ 90% (no condensation)
STORAGE CONDITION	
Temperature / Humidity	-20°C ~ 60°C (-4°F ~ 140°F) , 10% ~ 90% (no condensation)
DIMENSIONS	
Physical	
Carton	W x H x D = TBD
WEIGHT	
N.W. / G.W.	12 Kgs/13.5 Kgs
CONTAINER LOADED	
20ft / 40ft / 40ft HQ	TBD (Sets , By pallet)

TOUCH	VIDEO INPUT	ENHANCED PANEL	POWER	OTHERS
Resistive Touch	AV-IN	High Brightness Panel	24V DC-IN	Motion Sensor
Projected Capacitive Touch	AV Looping	Sunlight Readable	9~36V DC-IN	Light Sensor
Infrared Touch	HDMI / DP	Wide Viewing Angle	48V 72V DC-IN	VR-knob Dimming
Protected Glass	HD-SDI	Wide Temperature	90V 125V DC-IN	RS232 Remote On/Off
Optical Bonding		UV Film	110V 220V DC-IN	Military Connector: MIL 38999
		Anti-Vandal		Metal Connector: M12 / M16
				Stainless 316 Enclosure

MECHANICAL DRAWING:

This is subject to change without Notice. Final Drawings Will be Provided for Approval after Order.



Drawing No.: EPMW2400IP-TR-DC-CA01-02292024-V1

