

MILITARY GRADE IP65 FRONT PANEL MOUNT LCD

MILITARY GRADE, IP65 FRONT PANEL MOUNT OSD AT FRONT BEZEL

27" LCD monitor, 3840x2160, LED-300nits, 3*HDMI, 2*DP inputs, WT(-32~55C)

Built-In PCAP touch MIL-STD-810 (Vibration/ Shock) MIL-STD-461 (EMI/EMC)

Built-In Speakers

Power 9~36V DC

Model: EMPMW27KTCA1



FEATURES:

- **Modular Mechanical Design:** Enables flexible product configuration and simplifies maintenance.
- **Built-in PCAP Touch Screen:** Ideal for interactive applications requiring precise input.
- **Auto-brightness sensor available, enabling** optimal visibility in both day and night environments.
- **MIL-STD-810 (Vibration/ Shock)**
- **MIL-STD-461 (EMI/EMC)**
- **Built-In Speakers**
- **Power 9~36V DC**

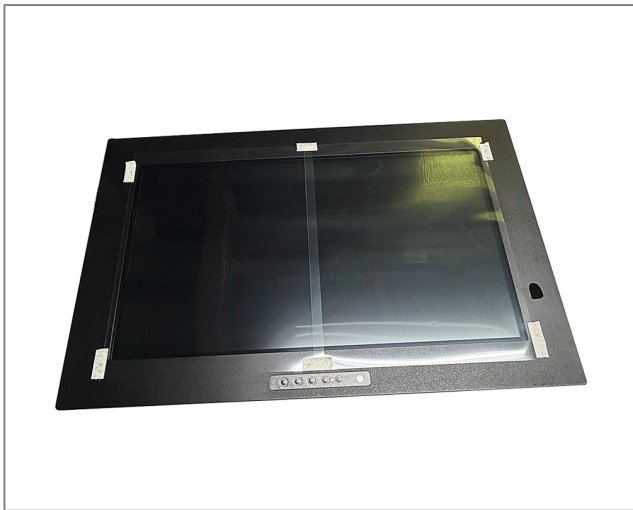
SPECIFICATIONS:

Cell Type	TFT LCD
Glass Surface	Black Anti-Glare, low reflection coating
Aspect Ratio	Wide
Size	27" viewable diagonal area
Active Area	597.89(H) x 336.31(V) mm
Pixel Pitch	0.3114(H) x 0.3114(V) mm
Native Resolution	3840(H) x 2160(V)
Colors	1.073 B
Brightness	300
Contrast	3000 : 1
Response Time	≤ 9.5 ms (G-to-G)
Viewing Angle (typical)	H. 178°(- 89°~ + 89°) , V. 178°(- 89°~ + 89°)
Light Source	LED backlight, Long life, 35,000 hrs (typ)

**Specifications subject to change without notice, not responsible for typographical errors.*

CERTIFICATION	
FCC , CE	
INPUT TERMINALS	
3 x HDMI, 2 x DP , 1 x PC Audio (Stereo Headphone Jack) , 1 xDC Power Plug	
CONVENIENT FEATURES	
Auto Calibration , Back Light Adjustment , Plug&Play (VESA DDC/CI, DDC 2B) , OSD Multi-Languages , Wall Mount Ready (VESA Dimension - please refer to Drawing)	
POWER	
9~36V DC	
POWER CONSUMPTION	
Operation / Power Saving	42.5watt , < 1 watt (Support DPMS)
OPERATING CONDITION	
Temperature / Humidity	-32°C ~ 55°C (25.6°F ~ 131°F), 10%~ 90% (no condensation)
STORAGE CONDITION	
Temperature / Humidity	-20°C ~ 60°C (-4°F ~ 140°F), 10%~ 90% (no condensation)
DIMENSIONS	
Physical	Please refer to Drawing
Carton	W x H x D = TBD
WEIGHT	
N.W. / G.W.	12 Kgs/13.5 Kgs
CONTAINER LOADED	
20ft / 40ft / 40ft HQ	TBD (Sets , By pallet)

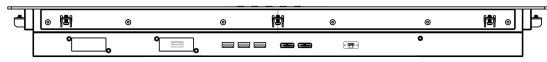
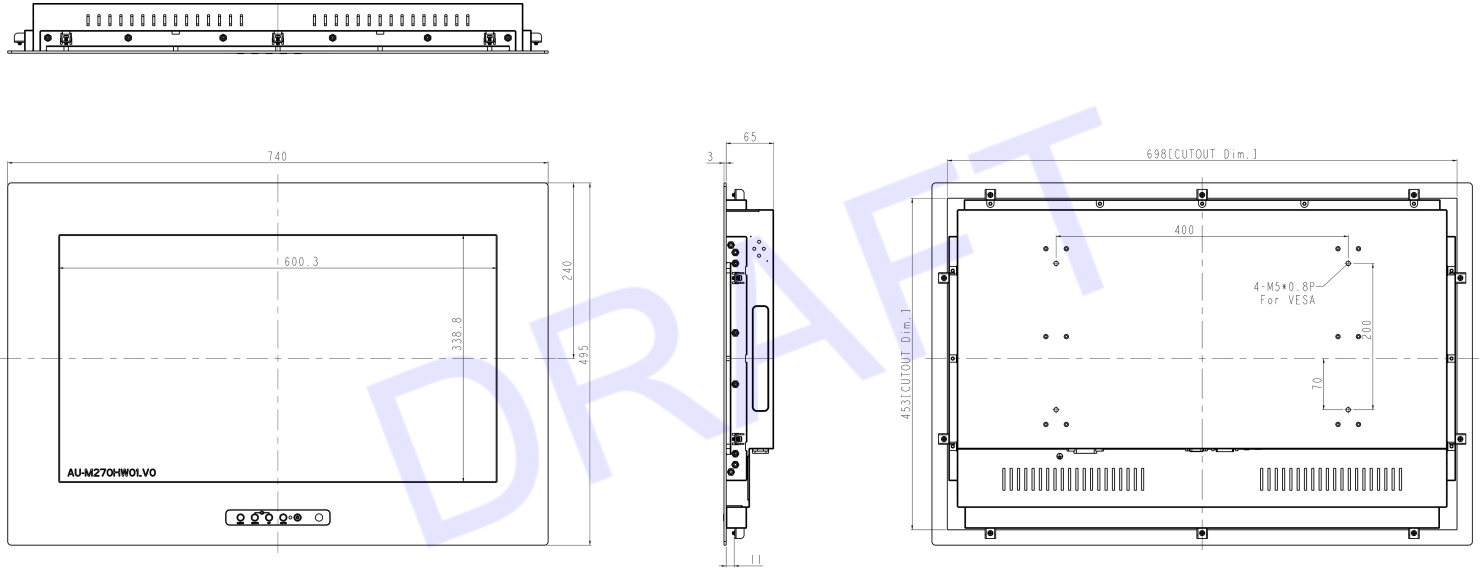
ACTUAL PICTURES:



Reference: SO 121547 | Model: EMPMW27KTCA1

MECHANICAL DRAWING:

This is subject to change without Notice. Final Drawings Will be Provided for Approval after Order.



USB 3*HDMI 2*DP PWR



Drawing No.: EMPMW27KTCA1-03122026-V1