



## Rugged Completely Sealed IP66/NEMA4X Stainless Steel Chassis/Surface Mount

**MODEL: SCHW4250HB-SIP-V1**

42.5" LCD monitor LED backlight, 1920x1080, 1000nits with 2mm AR glass, VGA and DVI input.



NEMA 4X



VESA Mount



High Contrast



Low Power



Wide Viewing  
Angle

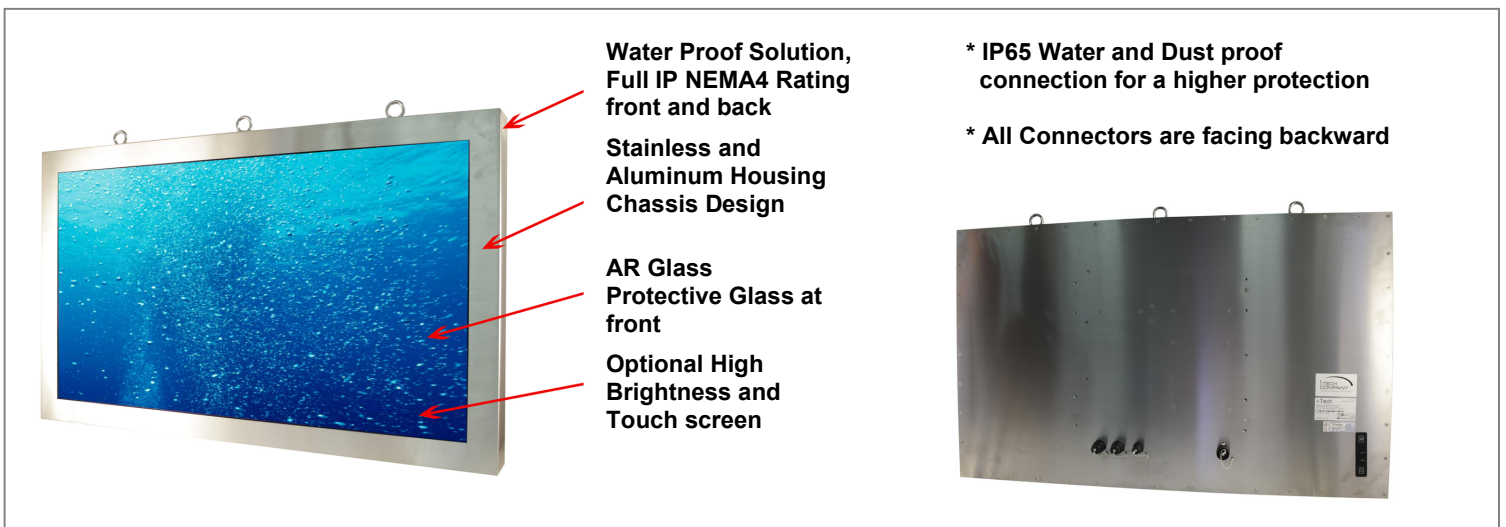
### FEATURES

- Air Curtain between Glass and LCD
- AR IR 3M Rejection film
- Please make sure add shield at top and fill at 15-20 degree down
- Auto Light sensor location at the front middle.
- Dual Input Power LCD AC 100~240 VAC input with a UK power cord. Heater Power 220VAC UK power cord
- Operating Temp is -20 ~ 50C
- Storage Temp -20C ~ 60C
- Integrated Internal Heater Power 220VAC power cord with power switch.

### OPTIONS

- Optional custom fitting for integrated computer Atom D2550 1.86 Hz, 32GB Wide temp SSD and 4GB Memory (DVI x 1 + RS232 x 1)
- 1 + USB x 2 + POWER x 1 + LAN x 1
- Optional Custom fitting for purging the monitor's enclosure
- Optional for 9-36V DC input
- Optional 5 Wired Resistive touch/ IR/ PCap Touch Screen (USB Default/ RS232 per request controller)
- Optional High Brightness 1000nits For Semi outdoor application
- Optional for Auto Dimming Sensor
- Optional for IR Remote Control with Front Sensor.
- Optional Heater for lower temperatures -30C (-22F)
- Optional Integrated VGA/ DVI Extender
- Transmission length up to 1,000ft over CAT5e cable for VGA input
- Transmission length up to 300ft over CAT5e cable for DVI input

### Rugged Completely Sealed IP66/NEMA4X Stainless Steel Chassis/Surface Mount LCD Monitor



**Water Proof Solution,  
Full IP NEMA4 Rating  
front and back**

**Stainless and  
Aluminum Housing  
Chassis Design**

**AR Glass  
Protective Glass at  
front**

**Optional High  
Brightness and  
Touch screen**

**\* IP65 Water and Dust proof  
connection for a higher protection**

**\* All Connectors are facing backward**



## SPECIFICATION

LCD Display	
Size / Panel Type	42.5" TFT LCD Panel
Resolution	1920 x 1080
Brightness (cd/m <sup>2</sup> )	1000 cd/m <sup>2</sup>
Contrast Ratio	4000 : 1
Response Time	6.5 ms
Backlight	LED backlight unit
Colors	16.7M colors
Viewing Angles	178°/178°
Surface Hardness	7~8H, AR Glass
Touch Screen (Optional)	
Touch Screen Type	IP65 Front bezel if add IR Touch (Optional)
Surface Hardness	7~8H (AR Glass)
Environment	
Operating Temperature	-20°C~+50°C
Storage Temperature	-20°C~+60°C
Humidity	5%~95% RH(Non-Condensing)
Water-Proof Rating	IP66/NEMA4, 6 Side Water-Proof

System	
OSD	Menu, Auto, On/Off, Up, Down
I/O Interface	VGA x 1, DVI x 1, Power in x 1
Power Input	LCD AC 100~240VAC input with a UK power cord. Heater Power 220VAC UK power cord
Power Consumption	138W
Certification	FCC/CE/RoHS Compliance
Dimension/Weight	1041.4mm (W) x 658.4mm (H) x 103.3mm (D)/37kgs

## ACCESSORIES

Water proof VGA cables 6ft long x 1
Water proof DVI cables 6ft long x 1
External Power Adapter x 1

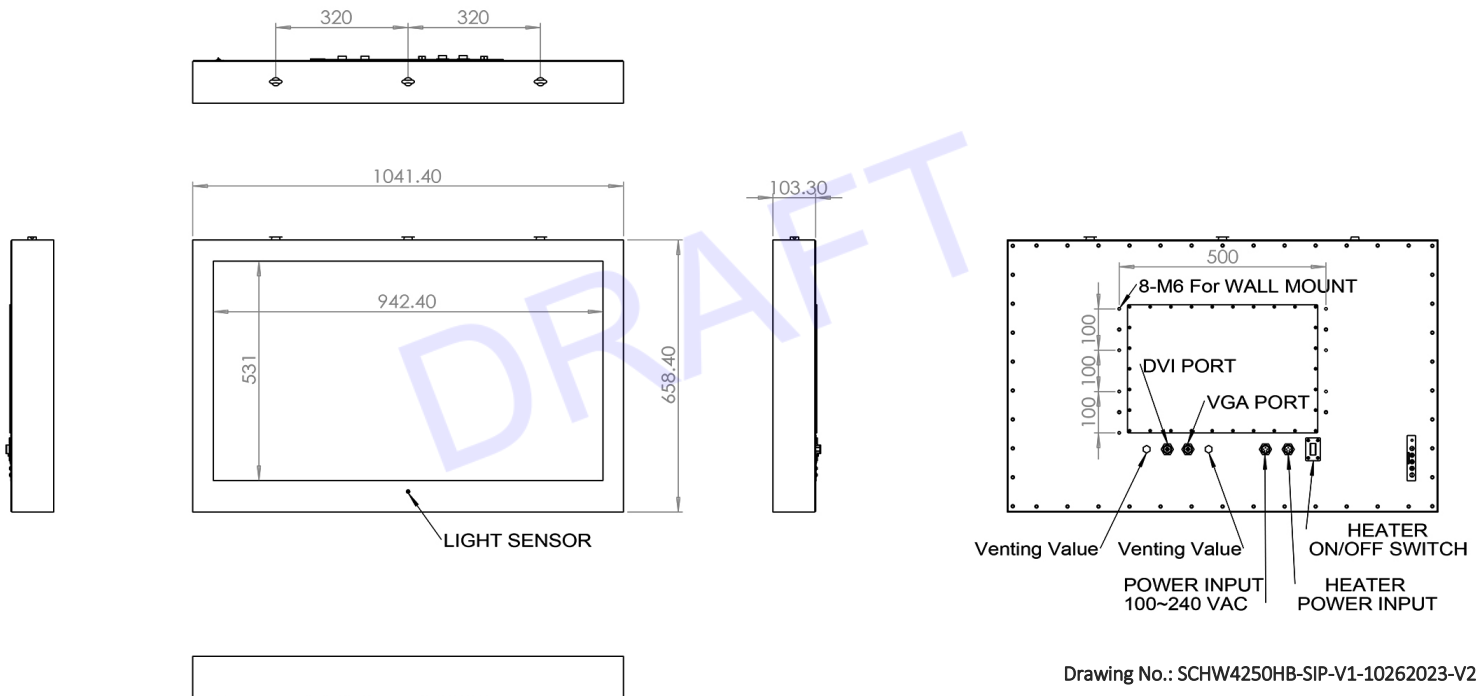
*\*Specifications subject to change without notice, not responsible for typographical errors.*

## PHOTO GALLERY



## MECHANICAL DRAWINGS

*This is subject to change without Notice. Final Drawings Will be Provided for Approval after Order.*



Drawing No.: SCHW4250HB-SIP-V1-10262023-V2

Modified: 10-26-2023