

1U Rackmount 19" TFT LCD Monitor, 1920x1080 native resolution with 12-port DVI-D KVM, 104-key keyboard with touchpad

Model: NW119HD-12De



BENEFITS:

- 1U 19" FHD LCD console drawer
- 1920 x 1080 native resolution / 16.7M colors
- 104-key keyboard with either touchpad or trackball
- One Man installation design
- Enhanced aesthetics with new molded front panel and 2-point lock
- 2-year standard warranty (upgradable up to 5 years)

SPECIFICATIONS

LCD Panel	
Panel size (diagonal)	18.5"
Native resolution	1920 x 1080
Brightness (cd/m ²)	350
Contrast ratio (typ.)	1000 : 1
Colors	16.7 M
Viewing angle (L/R/U/D)	89/89/89/89
Response time (ms)	20
Dot pitch (mm)	0.213
Display area (mm)	408.98H x 230.04V
Surface treatment	Anti-glare, Hard-coating
Surface hardness	3H
Backlight type	LED
MTBF (hrs)	50,000

Physical		
Product (WxDxH)	Console w/ KVM	442 x 580 x 44 mm 17.4 x 22.8 x 1.73 inch
Packing (WxDxH)	Console w/ KVM	590 x 808 x 140 mm 23.2 x 31.8 x 5.5 inch
Net weight	Console w/ KVM	12.5 kg / 28 lb
Gross weight	Console w/ KVM	18.1 kg / 39.8 lb

Mounting Distance	
Console w/ KVM drawer	470 ~ 800 mm 18.5 ~ 31.5 inch

Compliance	
EMC	FCC, CE & CCC certified
Safety	CE / LVD & UKCA
Environment	RoHS2 & REACH compliant

*Specifications subject to change without notice, not responsible for typographical errors.

Power		
Input	Auto-sensing 100 to 240VAC, 50 / 60Hz	
Consumption	Screen on	Max. 14W / Max. 45W
	Power saving mode	Max. 2W / Max. 34W
	Power button off	Max. 1W / Nil

Environment	
Operating temp.	0 to 55°C degree
Storage temp.	-20 to 60°C degree
Operating humidity	20~90%, non-condensing
Storage humidity	5 ~90%, non-condensing
Operating altitude	16,000 ft
Non-operating altitude	40,000 ft
Shock	10G acceleration (11ms duration)
Vibration	10~300Hz 0.5G RMS random vibration

DVI-D KVM	IP	Remote	12-port
	0	0	NW119HD-12De

DVI-D USB KVM Cable

Resolution 16:10 - max. 1920 x 1200
 Support **: 16:9 - max. 1920 x 1080
 4:3 - max. 1600 x 1200



NC-6 (6 ft)
 NC-15 (15 ft)

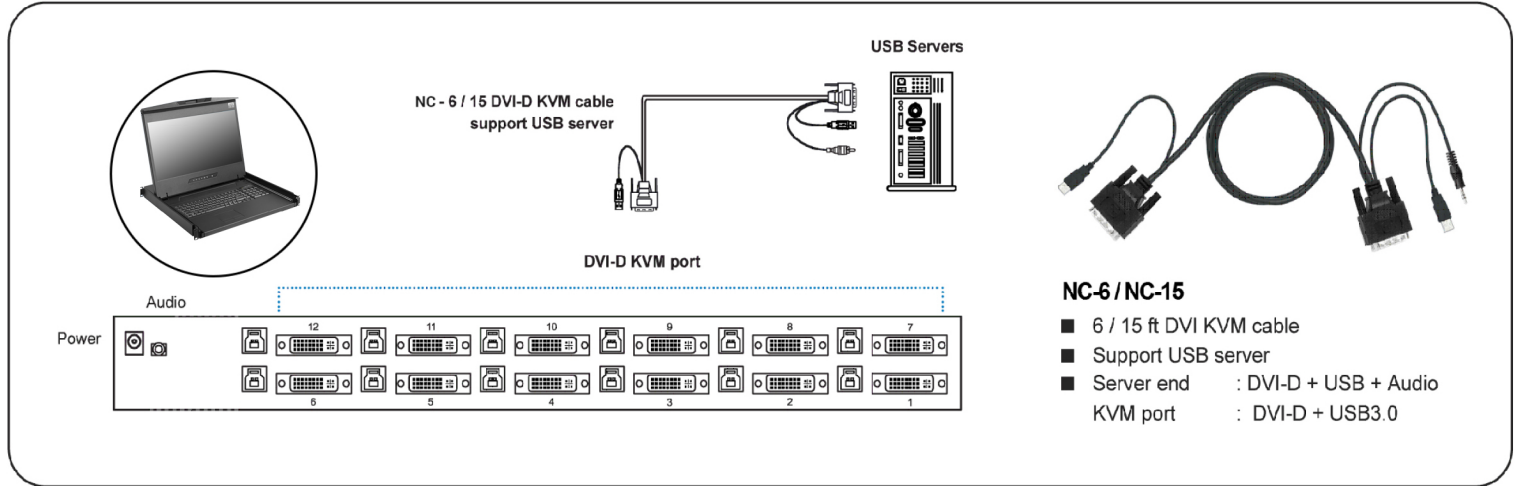
DVI KVM BENIFITS

- 12-port DVI-D, USB & Audio KVM
- DVI-D single link support 1920 x 1200 transmission
- Support widescreen & native SUN 1152 x 900 resolution
- Multi-platform for PCs, SUN and Mac G3 / G4 Mac / iMac
- Hot pluggable, no software or drivers required

OPTIONS

- Support VESA DDC2B emulation & TMDS signal pass-through
- Port switching via push button & keyboard hotkeys

KVM PORT CONNECTION

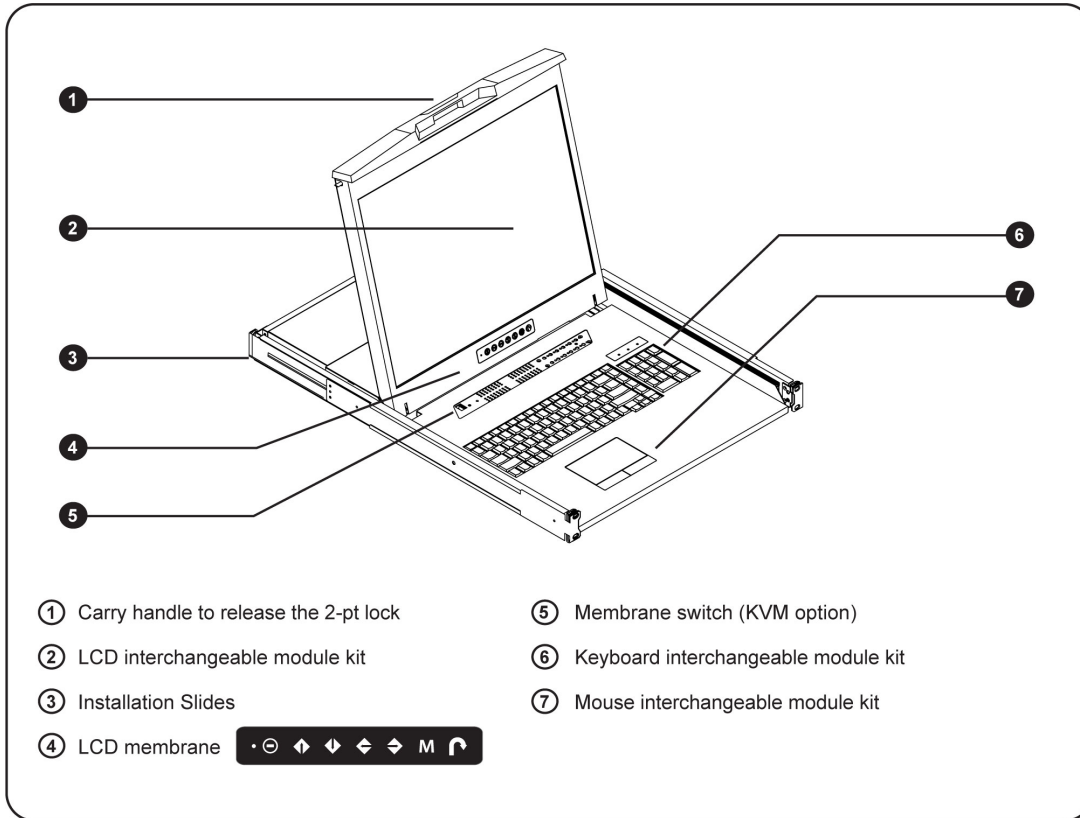


DVI KVM SPECIFICATIONS

KVM Port	
Number of ports:	12
Connector:	DVI-D connector USB 3.0 connector (combined for keyboard, mouse & audio)
Connectivity:	Combo 4-in-1 KVM cable, 6 or 15 feet
Local Console	
Graphic connector:	1 x DVI-D
Resolution:	Up to 1920x1200
Input device:	2 x USB type A for keyboard & mouse
Audio out:	1 x 3.5mm stereo audio
Management	
PC Selection:	Front button & keyboard hotkey

Compatibility	
Multi-platform:	Mix PCs, SUN and Mac G3 / G4 Mac / iMac
Support:	Windows 7 / Vista / 2003 / XP, Linux, Unix
Power	
Input:	Auto sensing 100 to 240VAC, 50 / 60 Hz
Consumption:	Max. 12 Watt, Standby 5 Watt
Regulatory	
Safety:	FCC & CE certified
Environment:	RoHS2 & REACH compliant
Environmental	
Operating:	0 to 50°C
Storage:	-5 to 60°C
Relative humidity:	90%, non-condensing
Shock:	50G peak acceleration (11ms, half-sine wave)
Vibration:	58-100Hz/0.98G (11ms/ cycle)

STRUCTURE DIAGRAM



STANDARD KEYBOARD

e keyboard integrated with touchpad



b keyboard integrated with



Supporting layouts

America						
	U.S.					
EMEA						
	U.K.	Germany	France	Russia	Spain	Italy
Asia						
	Japan	Korea				

KEYBOARD OPTIONS (US layout only)

Me Mac keyboard with touchpad



Se S keyboard with touchpad

Mb Mac keyboard with trackball

Sb S keyboard with trackball

