

1U Rackmount 20" LCD Combo DB-15, 8-port USB Combo KVM, Local Console, 104 key notepad keyboard w/ touch pad (Ne) w/ NE-6 x 8, 25.6" Deep

Model: NVP120S8e



BENEFITS:

- 1U 20" LCD console drawer
- 1600 x 1200 native resolution / 16.7M colors
- 104-key keyboard with touchpad
- One Man installation design
- Enhanced aesthetics with molded front handle and two point lock
- 2-year standard warranty (upgradable up to 5 years)

OPTIONS:

- DVI-D / HDMI 1.2 video input
- S-Video + Composite (BNC)
- Audio input & output
- DC power : 12V / 24V / 48V / 125V
- MAC or SUN Micro keyboard options available

SPECIFICATIONS

LCD Panel	
Panel size (diagonal)	20.1"
Native resolution	1600 x 1200
Brightness (cd/m ²)	300
Contrast ratio (typ.)	800 : 1
Colors	16.7 M
Viewing angle (L/R/U/D)	89/89/89/89
Response time (ms)	16
Dot pitch (mm)	0.255
Display area (mm)	408H x 306V
Surface treatment	Anti-glare, Hard-coating
Surface hardness	3H
Backlight type	LED
MTBF (hrs)	45,000

Environment	
Operating temp.	0 to 55°C degree
Storage temp.	-20 to 60°C degree
Operating humidity	20~90%, non-condensing
Storage humidity	5 ~90%, non-condensing
Operating altitude	16,000 ft
Non-operating altitude	40,000 ft
Shock	10G acceleration (11ms duration)
Vibration	10~300Hz 0.5G RMS random vibration

Compliance	
EMC	FCC, CE certified
Safety	CE / LVD certified
Environment	RoHS2 & REACH compliant

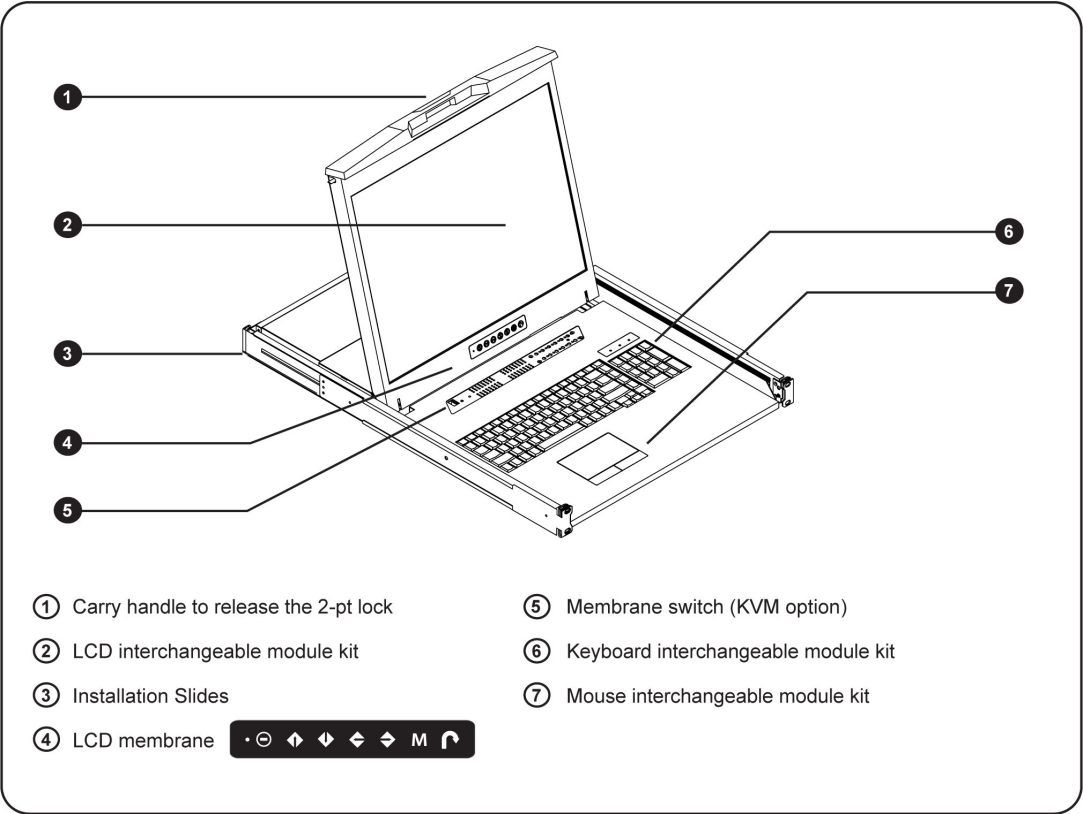
Video Option		
Digital	DVI	DVI-D single link
	HDMI	HDMI 1.2 / HDCP 1.1
Analog	S-Video (4-pin)	NTSC & PAL
	Composite (BNC)	NTSC & PAL

Audio Option		
Input	Connector	3.5mm stereo jack
	Impedance / Power level	30kΩ / 750mV
Output	Connector	3.5mm stereo jack
	Resistance / Power level	30kΩ / 2.8V
Speaker	Dual stereo	2W x 2

Power		
Input	Auto-sensing 100 to 240VAC, 50 / 60Hz	
Consumption	Screen on	Max. 45W / Max. 78W
	Power saving mode	Max. 2W / Max. 34W
	Power button off	Max. 1W / Nil

**Specifications subject to change without notice, not responsible for typographical errors.*

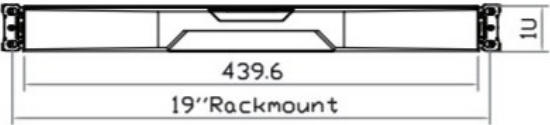
STRUCTURE DIAGRAM



DRAWINGS

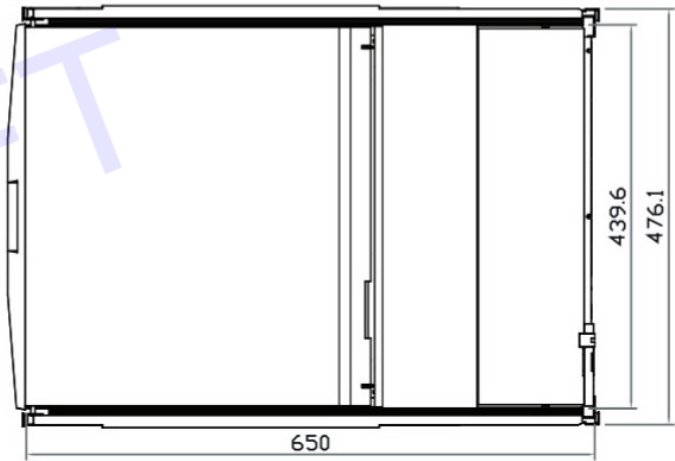
This is subject to change without Notice. Final Drawings Will be Provided for Approval after Order.

Front View

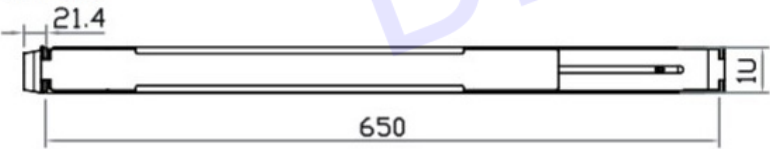


UNIT : mm
1mm = 0.03937 inch

Top View

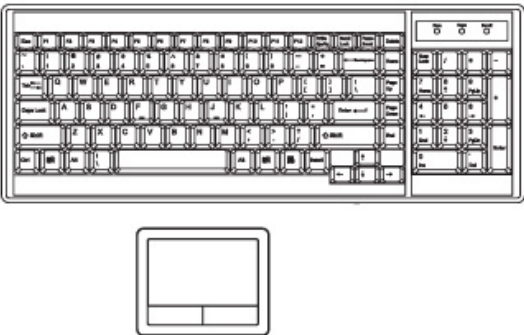


Side View



STANDARD KEYBOARD

Ge G keyboard integrated with touchpad



Supporting layouts

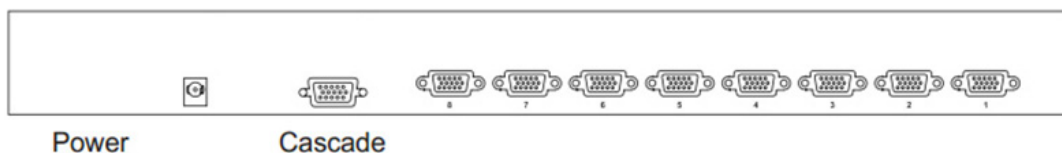
America					
	United States				
EMEA					
	United Kingdom	Germany	France	Spain	Norway
	Italy	Russia	Switzerland	Netherlands	Portugal
Asia					
	China	Japan	Korea	Arabia	Turkey

COMBO DB-15 KVM BENEFITS

- Combo DB-15 KVM with 8 ports in 1U
- Cascade switches up to 8 levels & Mix switches between Cat6 & Combo DB-15 KVM
- Mix PS/2, USB & SUN with Multi-Platform switch capability
- Support resolution up to 1920 x 1080
- SUN 1152 x 900 resolution compatible
- Hot pluggable, no software or drivers required
- Easy & quick installation

SWITCH FEATURES & OPTIONS

- Multi lingual on screen display menu
- Advanced user profiles and configurable OSD hot key combinations
- 12V, 24V and 48V DC Power options



Console	Local	Remote	IP	Ports
	1	0	0	8

COMBO DB-15 KVM BENEFITS

■ KVM Port	
Number of ports:	8
Connector:	DB-15 combo connector
Connectivity:	Combo 4-in-1 KVM cable, up to 6, 10 & 15 feet
■ Management	
Multilingual OSD:	English, France, German, Spanish, Italian, Russian, Simplified Chinese, Japanese
Hotkey combination:	Scroll-lock, Cap-lock, Num-lock, Alt, Ctrl & Win
Security:	Password enable & disable, up to 8 users profile for port access
PC Selection:	Front button, OSD menu & hotkey
■ Expansion:	Up to 128 servers by 8-level cascade
■ Compatibility	
Multi-platform:	Mix PCs, SUN and Mac G3 / G4 Mac / iMac
Support:	Windows 7 / Vista / 2003 / XP, Linux, Unix

■ Regulatory :	
Safety:	cUL, FCC & CE certified
Environment:	RoHS2 & REACH compliant
■ Environmental	
Operating:	0 to 50°C
Storage:	-5 to 60°C
Relative humidity:	90%, non-condensing
Shock:	50G peak acceleration (11ms, half-sine wave)
Vibration:	58-100Hz / 0.98G (11ms / cycle)

KVM PORT CONNECTION

