

1U Rackmount 20" TFT 1600x1200 LCD KVM with 104 Key Notepad Keyboard w/ Touchpad (e), Integrated with Combo CAT6 32 KVM Ports + 0 User Via CAT5 Extender + 0 Users Via KVM over IP. Over Depth is 25.6", Dongles Sold Separately

Model: NVP120C32e



BENEFITS:

- 1U 20" LCD console drawer
- 1600 x 1200 native resolution / 16.7M colors
- 104-key keyboard with touchpad
- One Man installation design
- Enhanced aesthetics with molded front handle and two point lock
- 2-year standard warranty (upgradable up to 5 years)

OPTIONS:

- HDMI 1.3 video input (AV3.0)
- 3G / HD / SD-SDI Broadcast-grade input (SDI)
- S-Video + Composite (BNC)
- DC power : 12V / 24V / 48V / 125V
- MAC or SUN Micro keyboard options available

SPECIFICATIONS

LCD Panel	
Panel size (diagonal)	20.1"
Native resolution	1600 x 1200
Brightness (cd/m ²)	300
Contrast ratio (typ.)	800 : 1
Colors	16.7 M
Viewing angle (L/R/U/D)	89/89/89/89
Response time (ms)	16
Dot pitch (mm)	0.255
Display area (mm)	408H x 306V
Surface treatment	Anti-glare, Hard-coating
Surface hardness	3H
Backlight type	CCFL
MTBF (hrs)	45,000

Compliance	
EMC	FCC, CE
Safety	CE / LVD & UKCA
Environment	RoHS3 & REACH

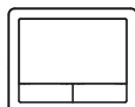
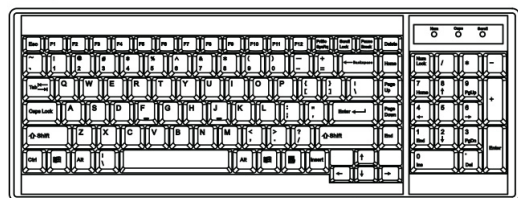
Power		
Input	Auto-sensing 100 to 240VAC, 50 / 60Hz	
Consumption (console / KVM)	Screen on	Max. 45W / Max. 78W
	Power saving mode	Max. 2W / Max. 34W
	Power button off	Max. 1W / Nil

Environment	
Operating temp.	0 to 55°C degree
Storage temp.	-10 to 60°C degree
Operating humidity	20~90%, non-condensing
Storage humidity	5 ~90%, non-condensing
Operating altitude	16,000 ft
Non-operating altitude	40,000 ft
Shock	10G acceleration (11ms duration)
Vibration	10~300Hz 0.5G RMS random vibration

**Specifications subject to change without notice, not responsible for typographical errors.*

STANDARD KEYBOARD

Ge G keyboard with touchpad



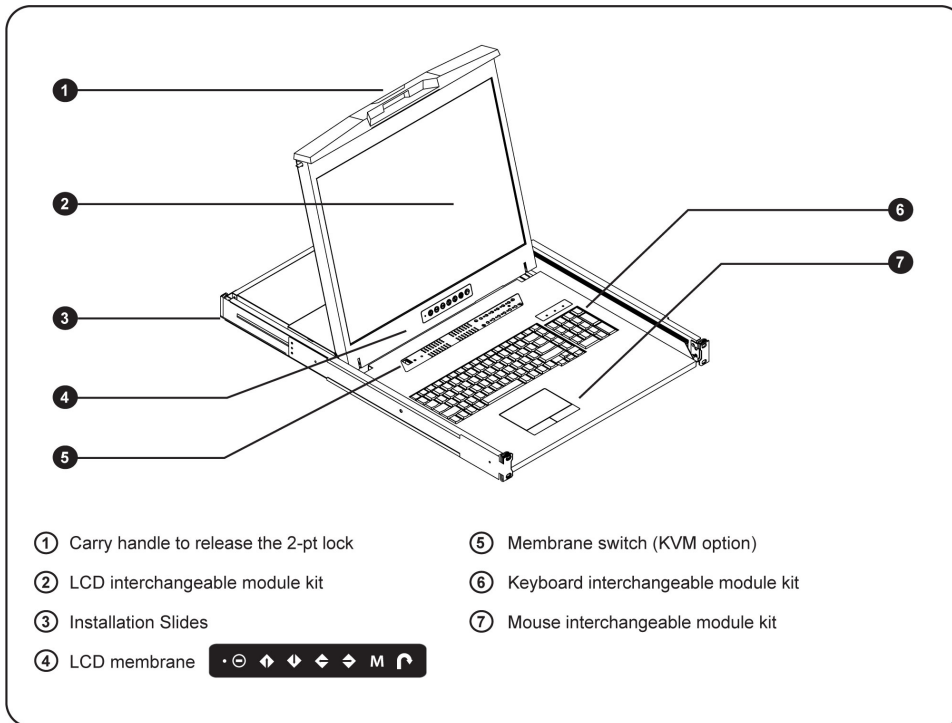
Supporting layouts

America						
	U.S.					
EMEA						
	U.K.	Germany	France	Russia	Spain	Italy
Asia						
	Japan	Korea				

KVM SPECIFICATIONS

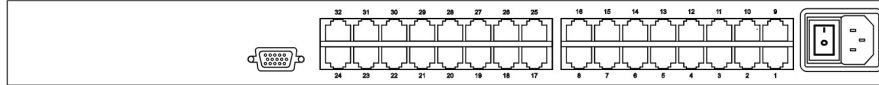
KVM PORT		
Number of ports :	32	
Connector :	RJ-45	
Connectivity :	DVI-D / VGA connector dongle up to 40 meters (132 feet) via Cat6 / Cat5 cable	
LOCAL CONSOLE	Nil for LCD console drawer version	
MANAGEMENT		
Multilingual OSD	English, France, German, Spanish, Italian, Russian, Simplified Chinese, Japanese	
Hotkey combination	Scroll-lock, Cap-lock, Num-lock, Alt, Ctrl & Win	
Security	Password enable & disable, up to 8 users profile for port access	
PC Selection	Front button, OSD menu & hotkey	
EXPANSION	Up to 256 servers by 8-level cascade	
COMPATIBILITY		
Hardware :	HP / IBM / Dell PC, Server and Blade Server SUN / Mac	
OS Support :	Windows / Linux / Unix / Mac OS	
POWER		
Input :	Auto sensing 100 to 240VAC, 50 / 60 Hz	
Option DC :	12V / 24V / 48V / 125V DC input	
Consumption :	Max. 11W	
COMPLIANCE		
EMC :	FCC & CE	
Safety :	CE / LVD & UKCA	
Environment :	RoHS3 & REACH / WEEE	
ENVIRONMENTAL	Operating	Storage / Non-operating
Temperature :	0 to 55°C degree	-20 to 60°C degree
Humidity :	10~90%, non-condensing	5~90%, non-condensing
Altitude :	16,000 ft	40,000 ft
Shock :	-	10G acceleration (11ms duration)
Vibration :	-	10~300Hz 0.5G RMS random vibration

STRUCTURE DIAGRAM



KVM Rear Kit

Unit Depth: 25.6"



! The power of the KVM rear kit may be changed to external power design based on the LCD console drawer series and model.

KVM PORT CONNECTION



IF-DUSBC
USB-C dongle



IF-DDP
DP-USB dongle



IF-DHDMI
HDMI-USB dongle



IF-DUSBD
DVI-USB dongle



IF-DUSB
VGA-USB dongle

