

1U Rackmount 17" TFT LCD Monitor w/ Notebook Keyboard with Touch Pad Drawer w/ 8-Ports USB/PS2 Combo KVM (Includes 8pcs 6ft Long KVM NE-6 Cables)

**MODEL: NVP117-S801e**



### BENEFITS:

- 1U 17" LCD console drawer
- 1280 x 1024 native resolution / 16.7M colors
- 104-key keyboard with either touchpad or trackball
- Short depth design of 460mm and 500mm respectively
- One Man installation design
- New enhanced aesthetics with molded front handle
- 2-year standard warranty (upgradable up to 5 years)

### OPTIONS:

- HDMI 1.4 + DVI-D + Audio in & out + Speakers ( AV4.4 )
- HDMI 1.4 + Speakers ( HDMI )
- S-Video + Composite + Speakers ( BNC )
- 3G / HD / SD-SDI Broadcast-grade input + Speakers ( SDI )
- Front USB hub port for device access ( USB )
- 2-post rack mounting brackets ( ORB-2.1 )
- DC power : 12V / 24V / 48V / 125V / 250V
- SUN Micro keyboard option
- 17" Touchscreen :  
Projected Capacitive 10-pt / Resistive 1-pt

### SPECIFICATIONS

LCD Panel	
Panel size ( diagonal )	17"
Native resolution	1280 x 1024
Brightness ( cd/m <sup>2</sup> )	250
Contrast ratio ( typ. )	1000 : 1
Colors	16.7 M
Viewing angle ( L/R/U/D )	85/85/80/80
Response time ( ms )	5
Dot pitch ( mm )	0.264
Display area ( mm )	337.92H x 270.33V
Surface treatment	Haze 25%, Hard-coating
Surface hardness	3H
Backlight type	LED
MTBF (hrs)	30,000

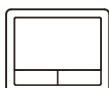
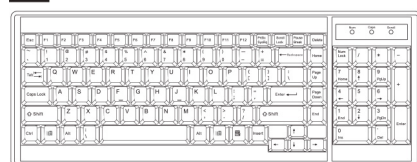
Physical		
Product ( W x D x H )	Console w/ KVM	442 x 580 x 44mm 17.4 x 22.8 x 1.73 inch
Packing ( W x D x H )	Console w/ KVM	590 x 815 x 140 mm 23.2 x 32.1 x 5.5 inch
Net weight	Console w/ KVM	13 kg / 28.6 lb
Gross weight	Console w/ KVM	19 kg / 41.8 lb

Mounting Distance	
Console w/ KVM drawer	470 ~ 800 mm 18.5 ~ 31.5 inch

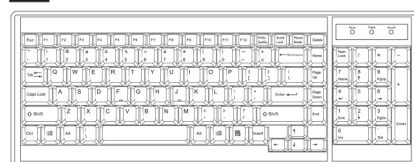
*\*Specifications subject to change without notice, not responsible for typographical errors.*

### STANDARD KEYBOARD

**Ge** G keyboard with touchpad



**Gb** G keyboard with trackball



### KEYBOARD OPTIONS \*US layout only

**Se** S keyboard with touchpad

**Sb** S keyboard with trackball



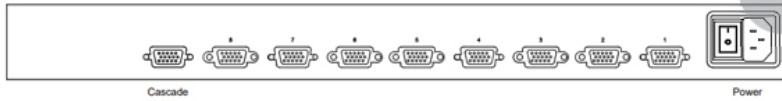
### Supporting layouts

America   
U.S.

EMEA        
U.K. Germany France Russia Spain Italy

Asia    
Japan Korea

## KVM Rear Kit

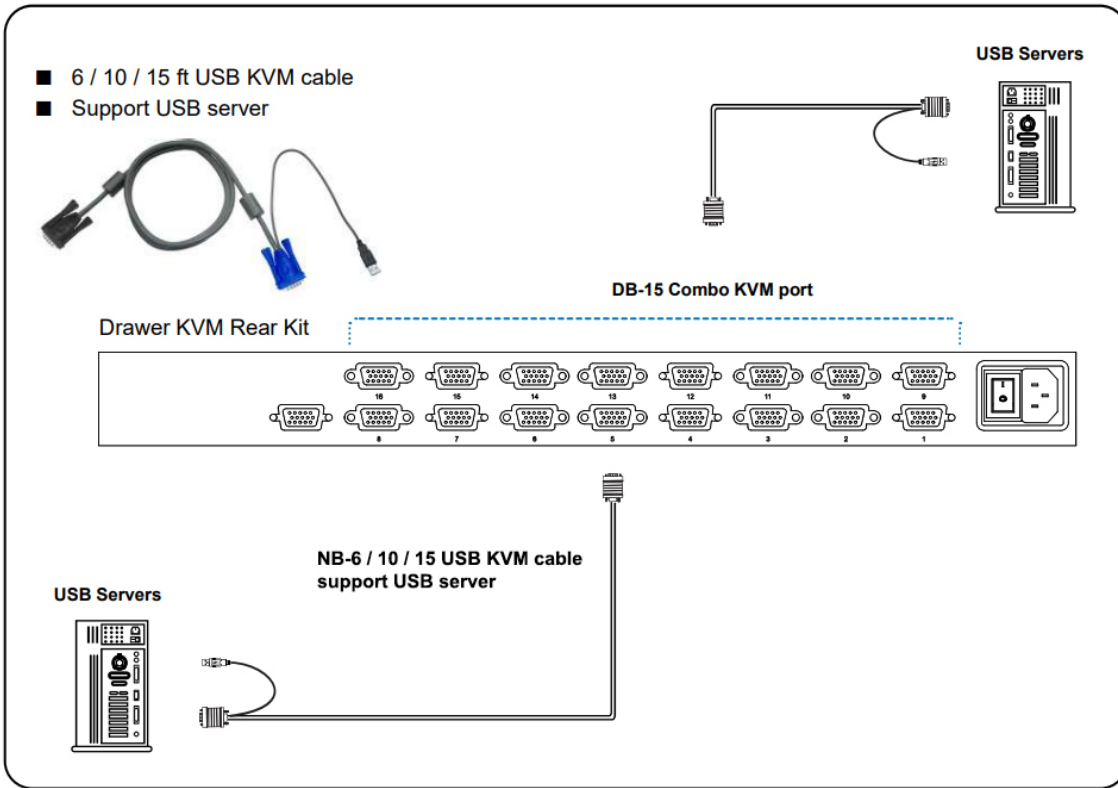


**⚠ The power of the KVM rear kit may be changed to external power design based on the LCD console drawer series and model.**

## KVM SPECIFICATIONS

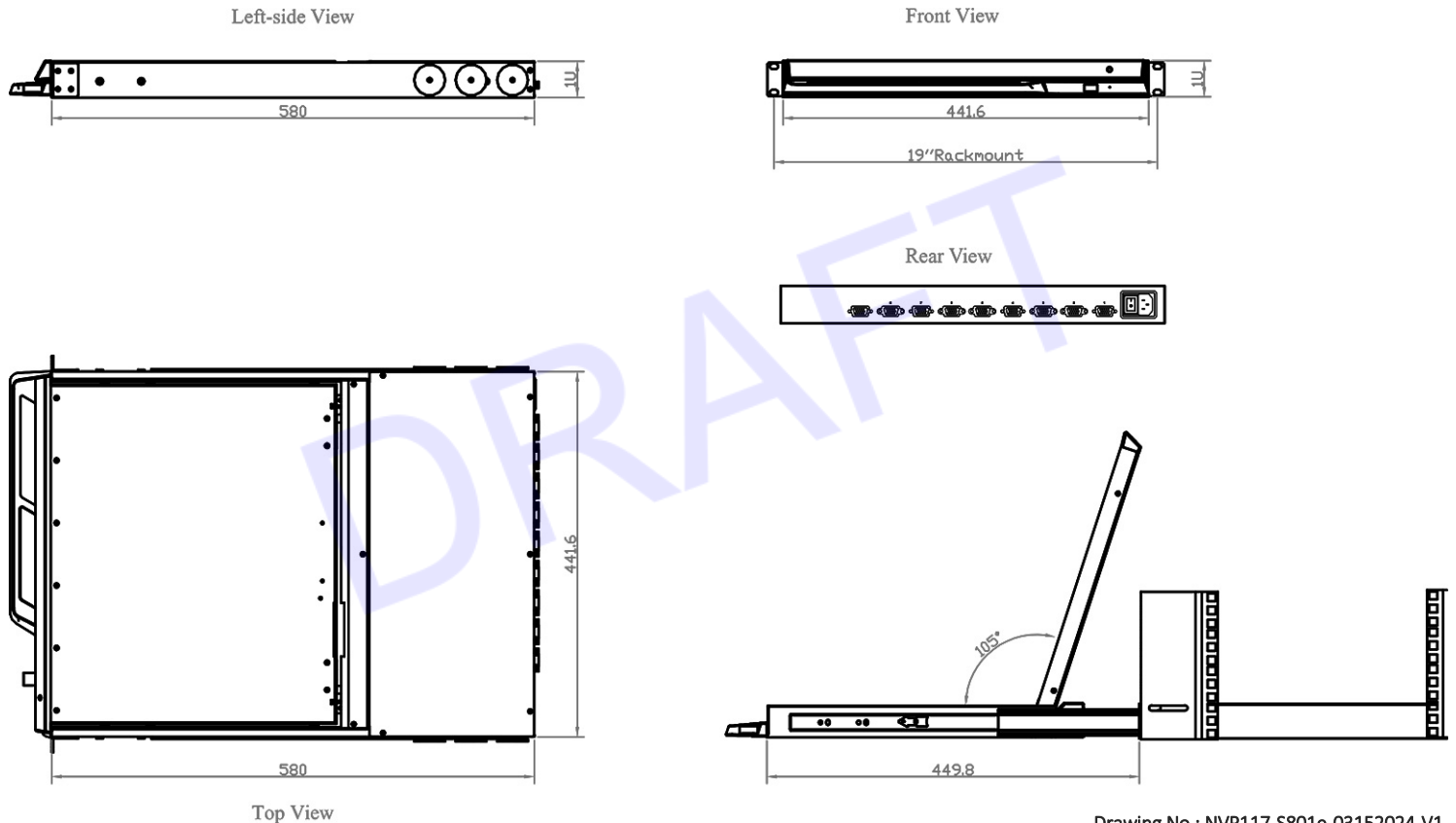
<b>KVM Port</b>		
Number of ports :	8	
Connector :	DB-15 combo connector	
Connectivity :	USB 2-in-1 KVM cable, up to 6, 10 & 15 feet	
<b>Local Console :</b>	Nil for LCD console drawer version	
<b>Management</b>		
Multilingual OSD :	English, France, German, Spanish, Italian, Russian, Simplified Chinese, Japanese	
Hotkey combination :	Scroll-lock, Cap-lock, Num-lock, Alt, Ctrl & Win	
Security :	Password enable & disable, up to 8 users profile for port access	
PC Selection :	Front button, OSD menu & hotkey	
<b>Expansion:</b>	Up to 128 servers by 8-level cascade	
<b>Compatibility</b>		
Hardware :	HP / IBM / Dell PC, Server and Blade Server SUN / Mac	
OS Support :	Windows / Linux / Unix / Mac OS	
<b>Power</b>		
Input :	Auto sensing 100 to 240VAC, 50 / 60 Hz	
Option DC :	12V / 24V / 48V / 125V DC input	
Consumption :	Max. 11W	
<b>Compliance</b>		
EMC :	FCC & CE	
Safety :	CE / LVD & UKCA	
Environment :	RoHS3 & REACH / WEEE	
<b>Environmental</b>	<b>Operating</b>	<b>Storage / Non-operating</b>
Temperature :	0 to 55°C degree	-20 to 60°C degree
Humidity :	10~90%, non-condensing	5~90%, non-condensing
Altitude :	16,000 ft	40,000 ft
Shock :	-	10G acceleration (11ms duration)
Vibration :	-	10~300Hz 0.5G RMS random vibration

## KVM PORT CONNECTION



## DIMENSION

*This is subject to change without Notice. Final Drawings Will be Provided for Approval after Order.*



Drawing No.: NVP117-S801e-03152024-V1