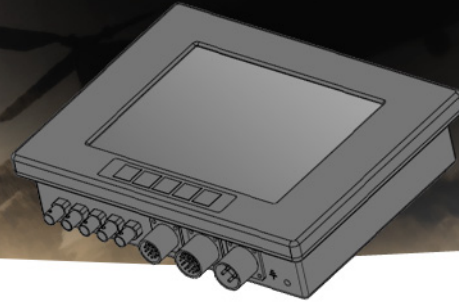


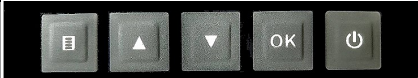
RUGGED MILITARY GRADE MONITOR

7" 800x600 450nits LCD Rugged aluminum alloy CNC Milled Housing Aluminum Alloy 6061 T6 with NEMA6 IP67, Native Military grade supporting operating temp. -30 to +85 degree C

Model: **NMM0840AV-V2**



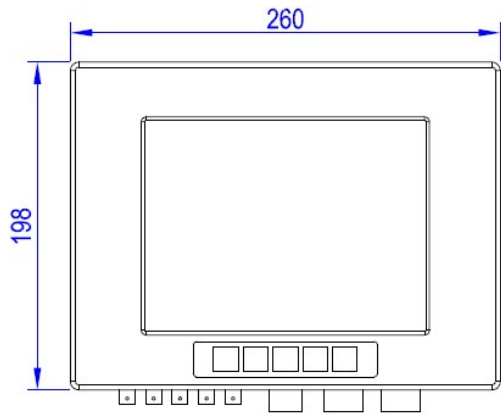
SPECIFICATIONS:

LCD	LCD Grade	Military grade
	Operating Temperature	-30 to +80 degree C native
	LCD Size	8.4"
	Resolution	800 x 600
	Aspect Ratio	4 : 3
	Brightness	450 cd/m2 sunlight readability
	Contrast Ratio	600 : 1
	Display Color	16.2M
Protective Glass	View Angle	80 / 80 / 80 / 60
	Protective Glass	Yes, build in
	Glass type	Strengthen glass
EMI Mesh	Glass Thickness	3.0 mm
	EMI Mesh	Yes, built in EMI mesh
Mechanical	Front Bezel	Rugged military grade 64430 aluminum alloy
	Surface Treatment	Chromate anti-corrosion treatment with powder coating in black
	Chassis material	Stainless Steel powder coating in black
IP Rating	Enclosure	IP-65, IP-66 water proof
	Connectors	IP-68 water proof
Mounting	Front Mount	Yes
	VESA	VESA-75
I/O Port	VGA	1 x VGA with D-38999 IP-68 Mil. connector
	DVI	1 x DVI with D-38999 IP-68 Mil. connector
	HDMI	1 x HDMI with D-38999 IP-68 Mil. connector
	Audio	1 x Audio-out with D-38999 IP-68 Mil. connector
	RS232	Optional
	Video Input	4 x Composite video Inputs
	Video Output	1 x Composite video output
	DC	1 x DC connector with IP-68 D-38999 Mil. Connector
OSD Control Buttons	Button Symbols	
	Control Buttons	Menu, Up, Down, OK, On-Off
Power Supply	DC Input	DC 12 V
	AC Input	AC 90~264V external adapter
	Power Consumption	Around 10~15 Watts
Dimension & Weight	Include Front Bezel	266 (W) x 222 (H) x 73 (D) mm
	Exclude Front Bezel	266 (W) x 222 (H) X 63 (D) mm
	Weight	Around 2.5 Kgs
Environmental	Operating Temperature	-10 ~ +55°C
	Storage Temperature	-30 ~ +85°C
	Humidity	5~95% Relative Humidity at 35°C non-condensing
	Salt Spray	Compliant to MIL-STD-810
	Fungus	Compliant to MIL-STD-810
	Note : need to pay test cost if test report is required	
EMI/EMC	CE	CE compliant
	FCC	FCC compliant

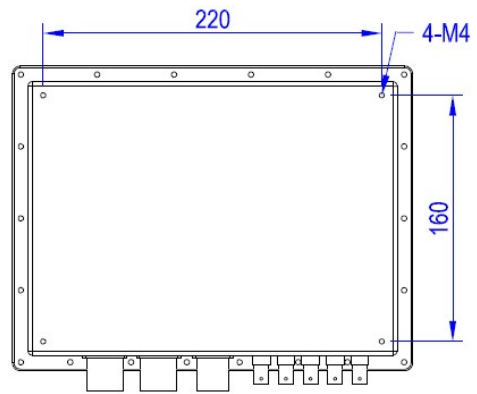
*Specifications subject to change without notice, not responsible for typographical errors.

MECHANICAL DRAWINGS:

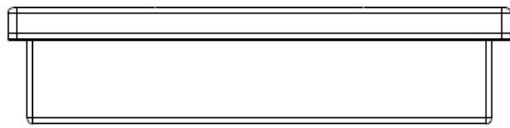
This is subject to change without Notice. Final Drawings Will be Provided for Approval after Order.



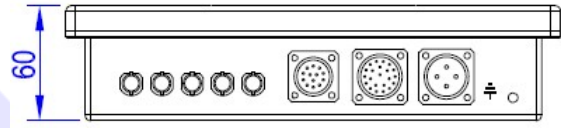
Front View



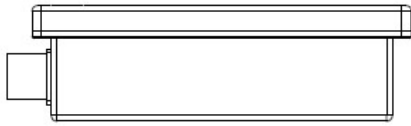
Rear View



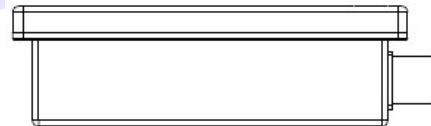
Top View



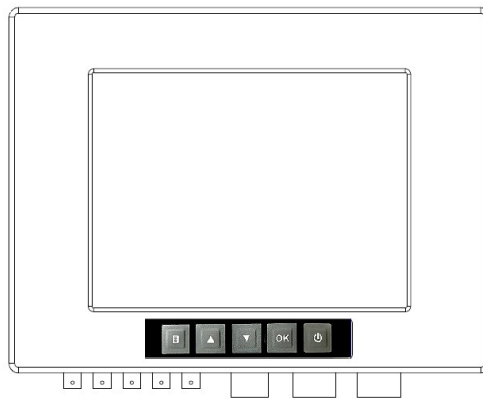
Bottom View



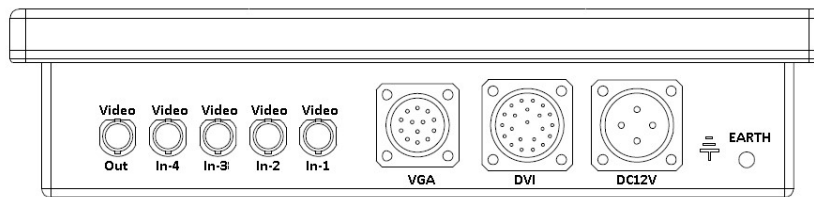
Side View 1



Side View 2



Control Buttons at Front



I/O Ports at Bottom

Drawing No.: NMM0840AV-V2-09012023-V1