

CHASSIS MOUNT PROFESSIONAL VIDEO MONITOR



Chassis mount 21.5" 1920 x 1080 , 1000nits high Brightness, 170 WVA, Front OSD, SDI x 1, HDMI 1.4b x 1, VGA, AV, 3G-SDI Loop output, speakers Operating temp -20C-50C, weight 4.8kg

MODEL: LCHW2150HB-SDI



LAYOUT AND COMPOSITION
The image output from the camera to TV live is often slashed. This monitor comes with Center Markers and Safety Markers, allowing to adjust the best angle of cameras in real time to show the most important images in center of shot.

AUDIO LEVEL MONITORING
With Audio Level Meter turned on, it is used to monitor current audio output and avoid being indifferent after an audio interruption as well as keep the sound within a reasonable DB range.

1000 NIT HIGH-BRIGHT
Featuring an amazing 1000 nit High Bright LCD screen, with the sunshine readable screen which cover 101% Rec.709 color space, therefore the gear suitable for any innovative outdoor framing.

HDR
When HDR is activated, the display reproduces a greater dynamic range of luminosity, allowing lighter and darker details to be displayed more clearly. Effectively enhancing the overall picture quality.

Cameras → SDI/HDMI → **Audio & Video Switcher**
RS232/RS422 REC

MIC → Balanced Analog Audio → **Audio Amplifier**
XLR → **Audio & Video Switcher**

Audio & Video Switcher → SDI/HDMI → **Monitor**

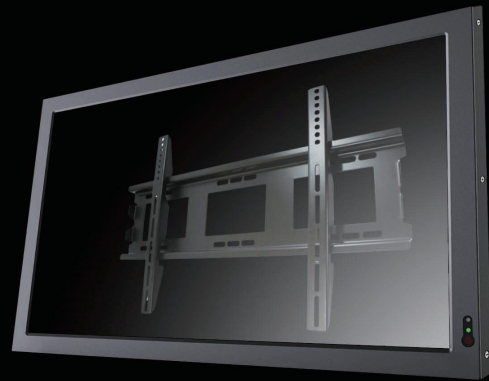
Public View **Education** **Concert**

Live Stream **E-Sport** **Wedding**



Wall-mount

It can be installed and fixed on the wall through the VESA 75/100 mm screw points at its back.



ACCESSORIES

STANDARD



15V 4A DC Power Adapter



HDMI A to A Cable



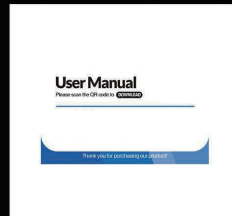
VGA Cable



Audio & Video Input Cable



Base Stand



User Manual

SPECIFICATIONS

| | |
|---------------------------|---|
| DISPLAY | |
| Panel | 21.5" LCD |
| Physical Resolution | 1920x1080 |
| Aspect Ratio | 16:9 |
| Brightness | 1000 cd/m2 |
| Contrast | 1500:1 |
| Viewing Angle | 170°/170° (H/V) |
| Color Space | 101% Rec. 709 |
| HDR Supported | HLG; ST2084 300/1000/1000 |
| INPUT | |
| SDI | 1 x 3G-SDI |
| HDMI | 1 x HDMI 1.4b |
| VGA | 1 |
| AV | 1 |
| USB | USB 2.0 (for upgrade) |
| OUTPUT | |
| SDI | 1 x 3G-SDI |
| SUPPORT ED FORMATS | |
| SDI | 1080p 24/25/30/50/60, 1080i 50/60, 720p 50/60... |
| HDMI | 2160p 24/25/30, 1080p 24/25/30/50 /60, 1080i 50/60, 720p 50/60... |
| AUDIO IN/OUT | |
| Speaker | 2 |
| SDI | 16ch 48kHz 24-bit |
| HDMI | 8ch 24-bit |
| Ear Jack | 3.5mm - 2ch 48kHz 24-bit |
| POWER | |
| Input Voltage | DC 12-24V |
| Power Consumption | <36W (15V) |
| ENVIRONMENT | |
| Operating Temperature | 0°C~50°C |
| Storage Temperature | -20°C~60°C |
| DIMENSION | |
| Dimension(LWD) | 527.8mm x 313.3mm x 19.8mm |
| Weight | 4.87kg |

**Specifications subject to change without notice, not responsible for typographical errors.*