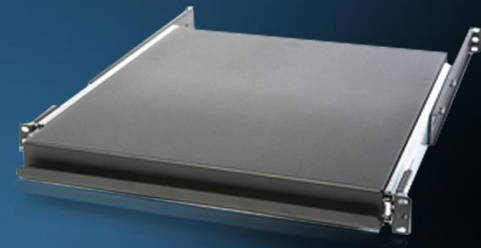


# Sliding Rack Shelves

## 20" Rack Mountable Sliding Shelf Model: SS2000



iTech manufactures and stocks 2 models of our sliding rack shelves - solid and vented - each holding up to a 100-pound weight capacity. Our sliding rack shelves are perfect for servers, keyboards, KVM's, switches, or any other component that you want the ability to slide out, whether for convenience or to access the back of the equipment.

The iTech 20" deep Solid Sliding Rack Shelf has a 100-pound maximum weight capacity. The shelf surface is 20" deep and 16.5" wide. The shelf extends a full 18" out of the rack making it easy to access the back of mission critical components and maintain your network equipment. The mounting ears will mount in any 19" EIA Compliant rack with a minimum mounting depth of 19" and maximum mounting depth of 28". The iTech 20" deep solid sliding rack shelf has a built-in lip to make sliding them in and out easy and, due to their innovative design, the 20" solid sliding rack shelf can be used as a 1U drawer.

All iTech rack shelves are made in the USA and backed by our Limited Lifetime Warranty.

### Features:

- 4 mounting holes per U space
- 20" depth
- Mounting depth adjusts from 19" to 28"
- 100 lb. weight capacity
- Rounded corners
- Easy to install
- Made in the USA
- Limited Lifetime Warranty

