

# PROGRAMMABLE TACTICAL AWARENESS CONTROLLER

15" Display, DVI-I/VGA Inputs (2), Composite Video RS170 Inputs (4)  
RS-170 Output (1), 20 Programmable Buttons (RS232 protocol), XGA Resolution  
1024 x 768 LED Backlight, MIL-STD Design, IP67 Sealed, 12-36Vdc  
External cables are not included. \*\*\*Non-Touch\*\*



**Model: DOT1500**

Highly ruggedized display offers Programmable Bezel Keys (ASCII or HEX code via RS-232 or RS-422 protocol) for control of external systems and/or internal display features. Multiple video and computer inputs (DVI-I, RS-170, VGA) and multiple mounting options allow for seamless integration within any rugged system.

## STANDARD FEATURES

- User Programmable Bezel Keys (20), RS-232/RS-422
  - Internal and/ or External Use
- Composite Video Inputs (4), PIP Capable
- Composite Video Output (1)
- Auto Sensing NTSC, PAL Formats
- DVI-I/VGA Inputs (2)
- SVGA Resolution (800x600)
- MIL-C Power\*
- LED Backlight (3000:1 Dimming Ratio)
- Anti-Reflective and Anti-Glare Treatments
- Enhanced Sunlight Readability
- IP67/NEMA 6 Enclosure (Sealed Connectors\*)
- 15.0" TFT AMLCD
- MIL-STD-461, 704, 810, 1275



\* Cables not included

## PROGRAMMABLE BUTTON INTERFACE FEATURES:

- Integrated Bezel Key Assignment/Naming Capability
- Computer-based software available for integration of existing code

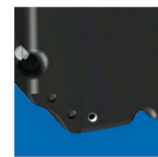
## OPTIONAL FEATURES:

- Resistive Touch Screen (USB or RS-232 Interface)
- XGA Display Resolution (1024x768)
- Night Vision Compatible – Monochrome Red/Green
- NVIS MIL-STD-3009 Class B White Compliant

## MOUNT OPTIONS



Corner



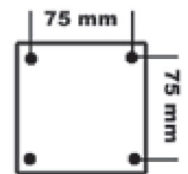
Panel



RAM



Side



VESA

## SPECIFICATIONS:

LCD SIZE	RESOLUTION	LUMINANCE	VIEWING ANGLE	CONTRAST RATIO	MAXIMUM POWER CONSUMPTION
15.0" TFT AMLCD	XGA (1024x768)	800 nits	160° (H) x 140° (V)	800:1	40 Watts
TECHNICAL SPECIFICATIONS					
Display	8-bit color, 16,777,216 colors. TFT AMLCD (Thin-Film Transistor Active-Matrix Liquid-Crystal Display)				
Dimming Ratio	3000:1				
Video Inputs	Composite Video (4), Auto Sensing NTSC, PAL-BGHID Formats; DVI-I/VGA (2)				
Video Outputs	Composite Video (1)				
Housing	Milled Aluminum, Black Hard Anodized				
Mount Options	Corner, Panel, RAM, VESA (75mm), Side (12.1"-15.0" sizes); Quoted individually.				
Wide Range DC Power Input†	10-36 VDC (12, 24, 28 VDC nominal)				
Power Conditioning	Protected against Internal Short Circuit, Load Dump, Over Voltage and Reverse Polarity				
ENVIRONMENTAL SPECIFICATIONS					
IP Rating	IP67 (NEMA 6 Submersible)				
Operating Temperature	-40°C to 71°C (-40°F to 160°F); (-20°C (-4°F) with Touch Option)				
Storage Temperature	-51°C to 71°C (-60°F to 160°F)				
Humidity	0-100%				
Altitude	45,000 ft.				
MILITARY SPECIFICATIONS					
MIL-STD-461	EMI	MIL-STD-810	Method 512, Immersion		
MIL-STD-704	Aircraft Power Requirements	MIL-STD-810	Method 512; Immersion		
MIL-STD-810	Method 500; Altitude	MIL-STD-810	Method 513; Acceleration		
MIL-STD-810	Method 501; I & II; High Temperature	MIL-STD-810	Method 514; Procedure I, II, V, VI; General Vibration		
MIL-STD-810	Method 502; I & II; Low Temperature	MIL-STD-810	Method 516; Procedure I, Functional Shock		
MIL-STD-810	Method 503; Temperature Shock	MIL-STD-810	Method 520; Temp, Humidity, Vibration, and Altitude		
MIL-STD-810	Method 505; Solar Radiation	MIL-STD-1275	Vehicle Power Requirements		
MIL-STD-810	Method 506; Rain	MIL-STD-1472	Thermal Contact Hazard		
MIL-STD-810	Method 507; Humidity	MIL-STD-3009	NVIS Compatible (Optional)		
MIL-STD-810	Method 508; Fungus	MIL-PRF-22885	Sunlight Readability for Push Buttons		
MIL-STD-810	Method 509; Salt/Fog	MIL-A-8625	Standard Finish, Type III, Class 1 & 2		
MIL-STD-810	Method 510; Blowing Sand and Dust	MIL-PRF-22750	Painted Finish, Optional, Minimum Quantity Required		
MIL-STD-810	Method 511; Explosive Atmosphere	MIL-DTL-26842	(and 38999) Connector, Qualified		

*\*Specifications subject to change without notice, not responsible for typographical errors.*

\* - Cables not included.

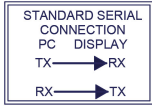
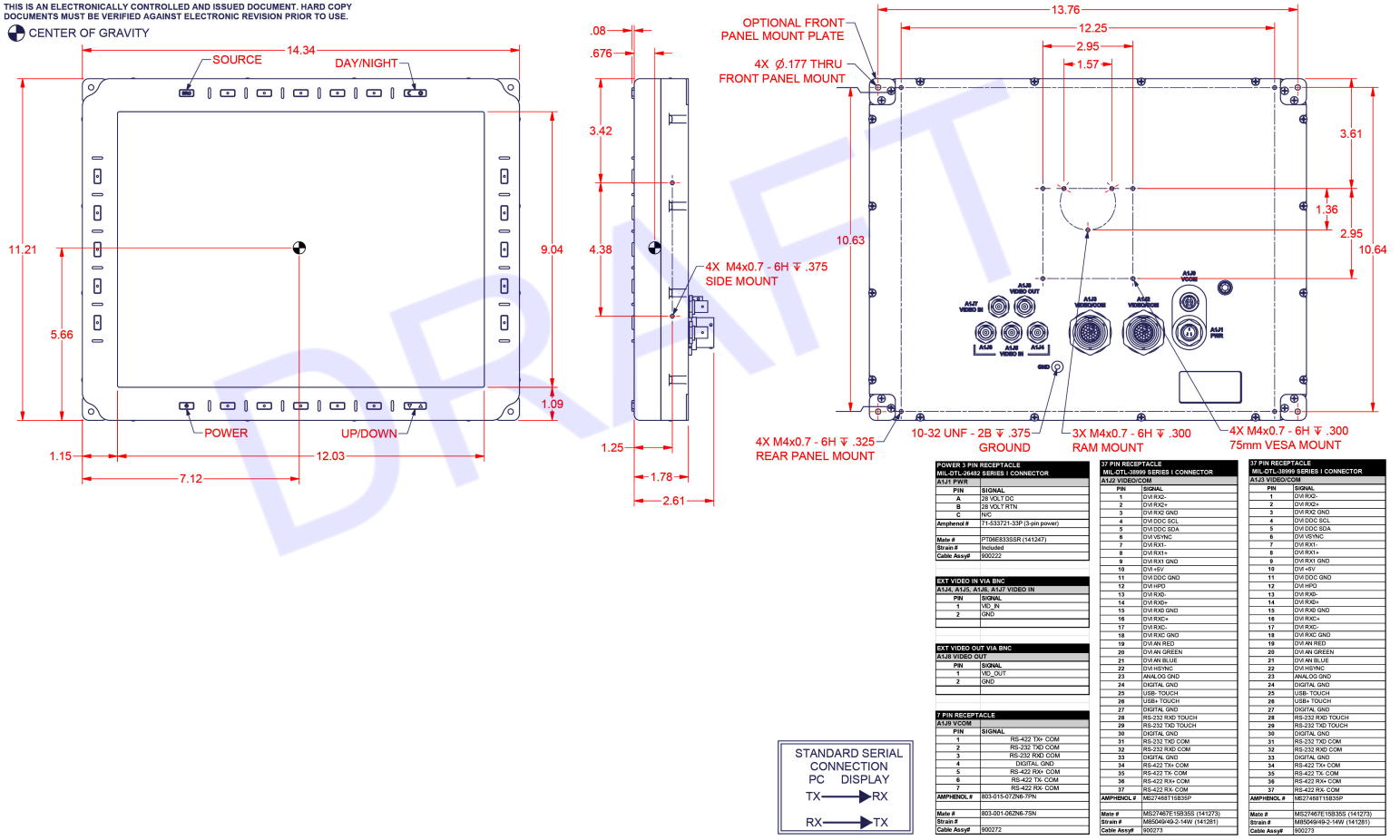
† - Power range specified covers momentary environmental fluctuations generally found in a mobile environment while display is operating. For power initialization and continual operation, nominal voltages are required.

# MECHANICAL DRAWINGS:

This is subject to change without Notice. Final Drawings Will be Provided for Approval after Order.

THIS IS AN ELECTRONICALLY CONTROLLED AND ISSUED DOCUMENT. HARD COPY DOCUMENTS MUST BE VERIFIED AGAINST ELECTRONIC REVISION PRIOR TO USE.

CENTER OF GRAVITY



17 PIN RECEPTACLE MIL-DTL-26482 SERIES I CONNECTOR		17 PIN RECEPTACLE MIL-DTL-3899 SERIES I CONNECTOR		17 PIN RECEPTACLE MIL-DTL-3899 SERIES I CONNECTOR	
AL17 PWR	SIGNAL	AL17 VIDEO COM	SIGNAL	AL17 VIDEO COM	SIGNAL
A	2B VOLT GND	1	DW-RKD	1	DW-RKD
B	3B VOLT R/W	2	DW-RKD	2	DW-RKD
C	N/C	3	DW-RKD GND	3	DW-RKD GND
Amphenol #	71-5331/71-53P (3-pin power)	4	DW-DCC SCL	4	DW-DCC SCL
Mat#	PT06B33SR (141247)	5	DW-DCC SDA	5	DW-DCC SDA
Strain #	100004	6	DW-RX+	6	DW-RX+
Cable Assy#	900022	7	DW-RX-	7	DW-RX-
		8	DW-RX0	8	DW-RX0
		9	DW-RX1 GND	9	DW-RX1 GND
		10	DW-HV	10	DW-HV
		11	DW-RX2 GND	11	DW-RX2 GND
		12	DW-HPD	12	DW-HPD
		13	DW-RSD	13	DW-RSD
		14	DW-RSD+	14	DW-RSD+
		15	DW-RSD GND	15	DW-RSD GND
		16	DW-RSD-	16	DW-RSD-
		17	DW-RKD	17	DW-RKD
		18	DW-RKD GND	18	DW-RKD GND
		19	DW-RX RED	19	DW-RX RED
		20	DW-RX GREEN	20	DW-RX GREEN
		21	DW-RX BLUE	21	DW-RX BLUE
		22	DW-RX NC	22	DW-RX NC
		23	ANALOG GND	23	ANALOG GND
		24	DIGITAL GND	24	DIGITAL GND
		25	USB TOUCH	25	USB TOUCH
		26	USB TOUCH	26	USB TOUCH
		27	DIGITAL GND	27	DIGITAL GND
		28	RS-232 RXD TOUCH	28	RS-232 RXD TOUCH
		29	RS-232 TXD TOUCH	29	RS-232 TXD TOUCH
		30	DIGITAL GND	30	DIGITAL GND
		31	RS-232 TXD COM	31	RS-232 TXD COM
		32	RS-232 RXD COM	32	RS-232 RXD COM
		33	DIGITAL GND	33	DIGITAL GND
		34	RS-422 TX COM	34	RS-422 TX COM
		35	RS-422 TX COM	35	RS-422 TX COM
		36	RS-422 RX COM	36	RS-422 RX COM
		37	RS-422 RX COM	37	RS-422 RX COM
		AMPHENOL #	MS14811839P		
Mat#	803-001-062W-73N	Mat#	MS27407E 100300 (141273)	Mat#	MS27407E 100300 (141273)
Strain #	900072	Strain #	MS06495-2-14W (141281)	Strain #	MS06495-2-14W (141281)
Cable Assy#	900072	Cable Assy#	900073	Cable Assy#	900073

Drawing No.: DOT1500-12212022-V1