

RUGGED LAPTOP



Rugged Laptop 14" FHD (1920 x1080) Standard Display, Intel Core i5-1135G7 Processor 2.4 GHz up to 4.2 GHz, Windows 10 Professional with 8GB RAM, 512GB PCIe SSD, Wi-Fi 6 + Bluetooth v5.2, 2MP Front Camera, HDMI, VGA, RS232, Smart Card, SD Card Reader, TPM, Backlit Keyboard, with docking connector, IP53, 4ft Drop, 3-Year Standard Limited Warranty Coverage



MODEL: DLTW1400-i5



DynaVue

FEATURES:

- 14.0" FHD DynaVue SR display with 1000 nits
- 11 th Generation Intel Core Processor
- Wireless Wi-Fi 6 AX201 and Bluetooth V5.2
- Up to 20 hrs. with 2nd battery
- Dedicated GPS and 4G LTE WWAN
- Customizable multimedia bay

SPECIFICATIONS

Durability	<ul style="list-style-type: none"> • MIL-STD 81 OH certified (Drop, Shock, Vibration, Rain, Dust, Altitude, Freeze/Thaw, High/Low Temperature, Temperature Shock, Humidity) • 4' drop 26 faces • IP 53 certified • Aluminum-magnesium alloy chassis • Port covers • Removable quick-release battery and storage drive • Optional sunlight readable display • Optional swappable battery technology
Operating System	Windows® 10 Pro 64-bit
Processors	<ul style="list-style-type: none"> • Intel® Core™ i7-1185C7 vPro™ (11 th Gen) 3.0GHz processor with Turbo Boost Technology up to 4.8GHz, 12MB cache • Intel® Core™ i7-1165G7 (11 th Gen) 2.8GHz processor with Turbo Boost Technology up to 4.7GHz, 12MB cache • Intel® Core™ i5-1145G7 vPro™ (11 th Gen) 2.6GHz processor with Turbo Boost Technology up to 4.4GHz, 8MB cache • Intel® Core™ i5-1135G7 (11 th Gen) 2.4GHz processor with Turbo Boost Technology up to 4.2GHz, 8MB cache • Intel® Core™ i3-1115G4 (11 th Gen) 3.0GHz processor with Turbo Boost Technology up to 4.1GHz, 6MB cache
Graphics	i7/i5 : Intel Iris Xe Graphics i3: Intel® UHD Graphics Optional NVIDIA® GEFORCE GTX 1050 ^{1E}
Memory	2 slots 8GB up to 64GB (2400-3200MHZ DDR4)

Storage	256GB NVMEPCISSD <ul style="list-style-type: none"> • Optional 512GB/1TB PCIE SSD • Optional OPAL 2.0 SSD • Optional 2nd/3rd storage (SSD)²
Display	14.0" FHD (1920x1080) <ul style="list-style-type: none"> • Optional 1000 nits DynaVue sunlight readable display without touch screen • Optional 1000 nits DynaVue sunlight readable display with capacitive multi-touch screen • User selectable touch mode for Finger/Water, Glove, or Stylus programmable function • Optional integrated microphone³
Audio	<ul style="list-style-type: none"> • Intel High Definition Audio Compliant • Integrated speaker x 2 • Keyboard volume and mute controls
Camera	<ul style="list-style-type: none"> • Optional integrated 2.0 MP web-cam with shutter design • Optional IR camera for Windows Hello²
Keyboard & Input	2 user-definable keys (P1/P2) <ul style="list-style-type: none"> • RF signal slide-switch • Standard membrane keyboard with optional LED backlight
Communications	<ul style="list-style-type: none"> • Integrated 10/100/1000 Ethernet • Intel® Wi-Fi 6 AX201 (802.11 a/b/g/n/ac/ax) • Bluetooth® V5.2 • Optional dedicated GPS module (UBLOX-NEO-M8N) • Optional 4G LTE multi-carrier mobile broadband • Optional RF antenna pass-through for GPS, WWAN, and WLAN



Security	• Intel vPro™ Technology (per CPU options)
	• TPM 2.0
	• NIST BIOS compliant
	• Easy removable SSD
	• Stealth mode
	• Kensington lock
	• Optional smart card reader ⁴
	• Optional Windows Hello ²
	• Optional night vision mode ⁵
	• Optional fingerprint scanner
	• Optional HF RFID/NFC reader ^{2,4}
	I/O Interfaces
• USB 3.2 Gen 2 (type C) x 1 (support DP)	
• USB 2.0 (type A) x 1	
• Audio in/out (combo jack) x 1	
• SD card (SDXC) x 1	
• 10/100/1000 Ethernet (RJ45) x 1	
• VGA port (D-sub, 15-pin) x 1	
• HDMI port (type A) x 1	
• Serial port (RS232/RS422/RS485 : D-sub, 9-pin) x 1	
• SIM card x 1	
• DC-In jack x 1	
• Optional smart card reader x 1 ⁴	
• Optional docking connector (41-pin Pogo) x 1	
• Optional RF antenna pass-through for GPS, WWAN, and WLAN	

Media Bay (One Option Only)	• Optional DVD super multi
	• Optional 2nd battery
	• Optional media bay storage (SSD) ²
	• Optional ExpressCard 54 x 1 or PCMCIA Type II x 1 ^{1,2}
	• Optional 2nd RJ45 and 2nd serial port (RS232) ^{1,2}
Power	AC adapter :100-240V, 50Hz-60Hz, 90W
	• Optional AC adapter (100-240V, 50Hz-60Hz, 120W), with NVIDIA® VGA Main battery Li-Ion, 10.8V, 4700mAh, 10 hours ⁶
	• Optional 2nd battery Li-Ion 10.8V, 4700mAh, 10 hours ⁶
	• Optional bridge battery: 5 minutes swap time ⁷
Environment	• Temperature
	Operating : - 20°C ~ 60°C/- 4°F ~ 140°F
	Storage :-51 °C~ 71 °C/-60°F~ 160°F
	• Humidity: 5%-95%
Dimensions. Weight	• 13.78" (W) x 11.1" (D) x 1.5" (H) ^E
	5.07 lbs ⁸
Warranty	3-year Standard Limited Warranty
1. Not available in combination with Intel Core™ i3-1115G4.	
2. Contact your sales representative for feature availability.	
3. Integrated microphone is available only with webcam.	
4. RFID/NFC and smart card reader are mutually exclusive.	
5. Night vision mode is available only for sunlight readable display.	
6. Tested using the MobileMark 2014 battery life benchmark. Results may vary under different situations including hardware configuration, software, operating conditions, power management settings and other factors.	
7. The system will stay operating (within 300 seconds in standby mode) when user swaps the battery.	
8. Weight varies with options. The dimension with optional discrete VGA is 2.4" (H).	

ACCESSORIES



120W AC Adapter with power cord



3rd SSD for media bay



90W AC Adapter with power cord



Battery Charger - 2 bays



Battery Charger - 8 bays



Car Adapters



12-16V Car Adapter with 180 degree connector & 72" cable-bare wire



12-16V Car Adapter with cigarette plug



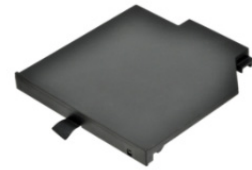
12-32V Car Adapter with bare wire



12-32V Car Adapter with cigarette plug



Office Dock with AC Adapter



Removable 2nd Battery for media bay



Removable Super Multi DVD for media bay



Screen Protector Film DLTW1400-i5



Shoulder Strap (2 Point)



Spare 256GB-1TB PCIE SSD with canister



Spare Main Battery DLTW1400-i5



Spare Stylus & Tether for capacitive touch



Vehicle Dock with Tri-RF Pass-through (PMT)



Vehicle Dock without Tri-RF Pass-through (PMT)