

RUGGED COMPLETELY SEALED IP66/NEMA4X STAINLESS STEEL CHASSIS/SURFACE MOUNT



24" LCD Monitor, 1920x1080, 250nits, Stainless steel 304 enclosures with Full IP66 / Wall Mount, Resistive Touch, VGA HDMI, USB and 12VDC with external 100-240VAC Power Adapter

Model: TICW2400-TR-V1

FEATURES:

- 24" Industrial Panel / 1920x1080
- Brightness: 250nits
- Stainless steel 304 enclosures with Full IP66 / Wall Mount
- Resistive Touch
- I/O (all connectors are waterproof connectors / 6ft long): VGA, HDMI, USB and 12VDC with external 100-240VAC power adapter

SPECIFICATIONS:

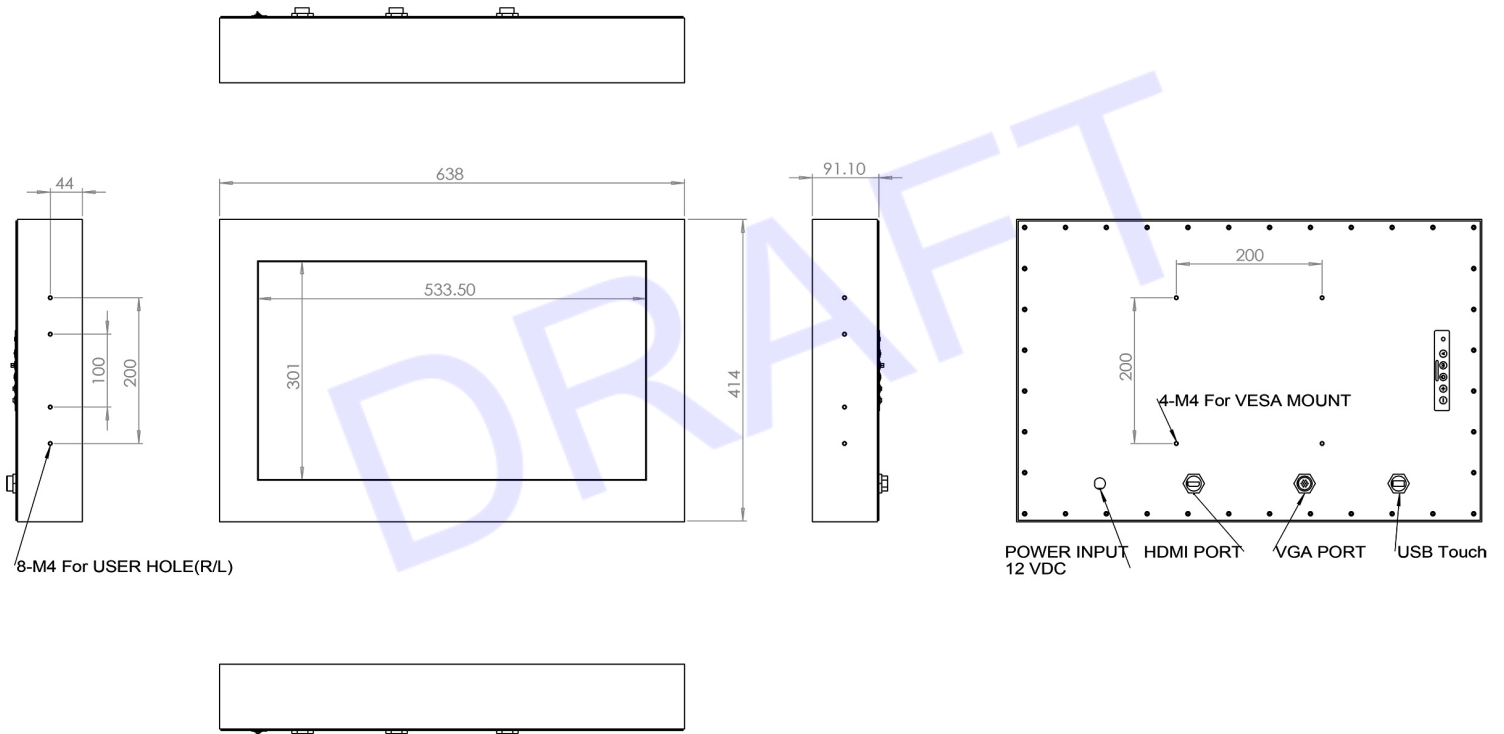
Panel	Cell Type / Glass Surface	TFT LCD / Black Anti-Glare, low reflection coating	
	Aspect Ratio / Size	Wide /24" viewable diagonal area	
	Active Area / Pixel Pitch	535(H) x 302(V) mm / 0.2768(H) x 0.2768(V) mm	
	Native Resolution / Colors	1920(H) x1080 (V)/16.7M	
	Brightness / Contrast	250 cd/m ² (typ) / 1000 : 1	
	Response Time	< 5 ms	
	Viewing Angle (typical)	H.170° (- 85° ~ + 85°) , V 160°(- 80° ~ + 80°)	
	Light Source	LED backlight, Long life, 35,000 hrs (typ)	
Input Sources	PC System	Signal	Analog RGB (0.7/1.0 V _{p,p} , 75 ohms)
		Sync	Separate Sync, Composite Sync, Sync On Green
		Frequency	F _n : 30 - 82Khz , F _v : 50 -75Hz
	Audio System	N/A	
Input Terminals	VGA, HDMI, USB		
Convenient Features	Auto Calibration , Back Light Adjustment, Plug&Play (VESADDC/CI, DDC 2B)		
	OSD Multi-Languages , Wall Mount Ready (VESA Dimension - please refer to Drawing)		
Power	12VDC with external 100-240VAC Power Adapter		
Power Consumption	Operation / Power Saving	61.25 watt, < 1 watt (Support DPMS)	
Operating Condition	Temperature / Humidity	0°C ~ 50°C (32°F ~ 122°F), 10% ~ 90% (no condensation)	
Storage Condition	Temperature / Humidity	- 20°C ~ 60°C (- 4°F ~ 140°F), 10% ~ 90% (no condensation)	
Certification		FCC,CE	
Dimensions	Physical	Please refer to Drawing	
	Carton	WxHxD=TBD	
Weight	N.W/G.W	12Kgs/13.5Kgs	
Container Loaded	20ft / 40ft / 40ft HQ	TBD (Sets , By pallet)	

Options	Touch	Video/TV	Enhanced Panel	Others
	Resistive touch	SV + AV	Panel with LED backlight	Digital Signage(Stand alone)
	Capacitive touch	SV + AV + AV Looping	High brightness panel	Networking Digital Signage
	Infrared touch	SV + AV + TV	Wide Temperature	Motion Sensor
	Protected glass		Sunlight Readable	Light Sensor
				Auto-Dimming

**Specifications subject to change without notice, not responsible for typographical errors.*

MECHANICAL DRAWING

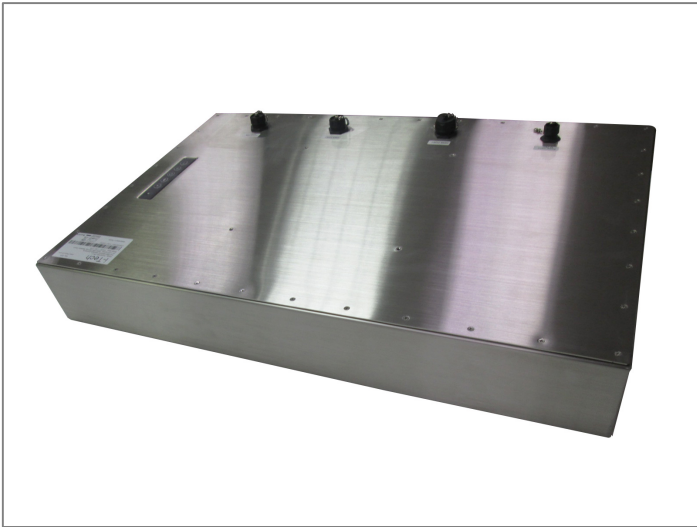
This is subject to change without Notice. Final Drawings Will be Provided for Approval after Order.



Drawing No.: TICW2400-TR-V1-03252024-V1

INPUT / OUTPUT





TOUCH TEST VIDEO



Click image to watch