

HIGH BRIGHTNESS IP65 FRONT PANEL MOUNT LCD MONITOR

15" 1000nits Industrial Panel Mount Monitor with PCAP Touch, IP65 stainless steel bezel, VESA mount, built-in speakers, and multi-interface support including VGA, DVI, HDMI, and USB for Touch, 100-240VAC Input



Model: EPM1500HB-TC-H

FEATURES:

- 15" Industrial Panel / 1024x768 / 1000nits
- Panel Mount (with 3mm Stainless Steel 304 Front Bezel) / clamp with VESA Mount
- Front Bezel : 410 x 335mm / Cut out: (H x V) is 367mm x 292mm
- P-CAP Touch / Front IP65
- Speakers
- I/O: VGA, DVI, HDMI, USB (for Touch use) and 100-240VAC Input

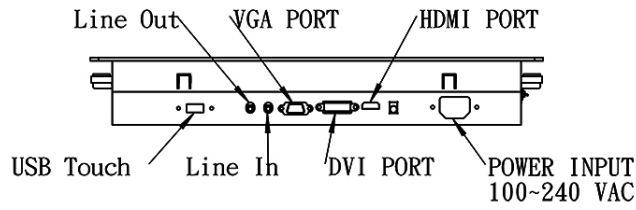
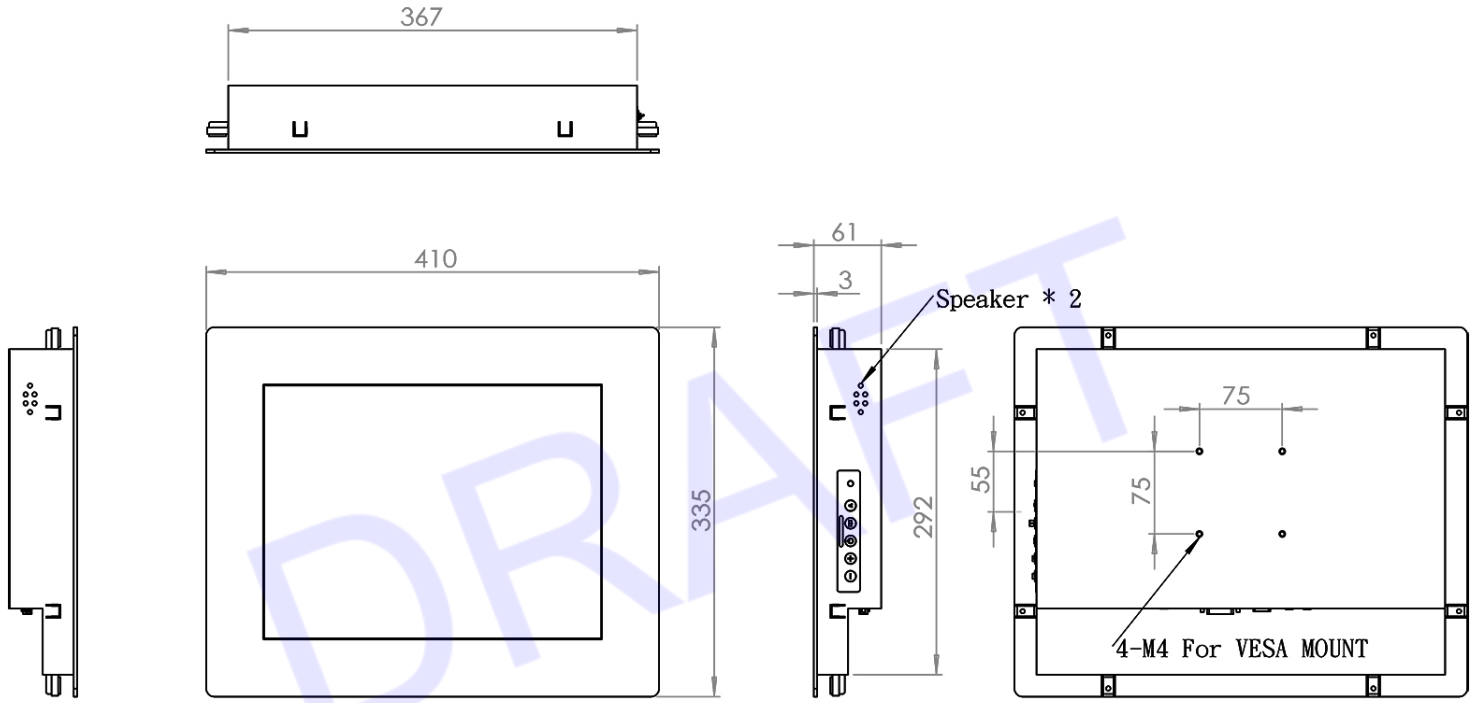
SPECIFICATIONS:

| | | |
|---------|--------------------------|-------------------------------|
| Display | Viewing Size Image | 15" |
| | Active Display Area (mm) | 305.80 (H) x 229.70(V) |
| | Pixel Pitch (mm) | 0.297 (H) x 0.297(V) |
| | Resolution | 1024x768 |
| | Contrast Ratio | 700 : 1 |
| | Color | 16.7 M |
| | Brightness | 1000 nits |
| | Viewing Angle | -80~80 (H) ; -70~70 (V) |
| | Recommended Resolution | 1024 x 768 @ 60H, 75Hz |
| Power | Source | 100-240VAC Input |
| | Consumption | 20W typical, normal operation |
| | Management | VESA DPMS Compliant |

**Specifications subject to change without notice, not responsible for typographical errors.*

MECHANICAL DRAWING:

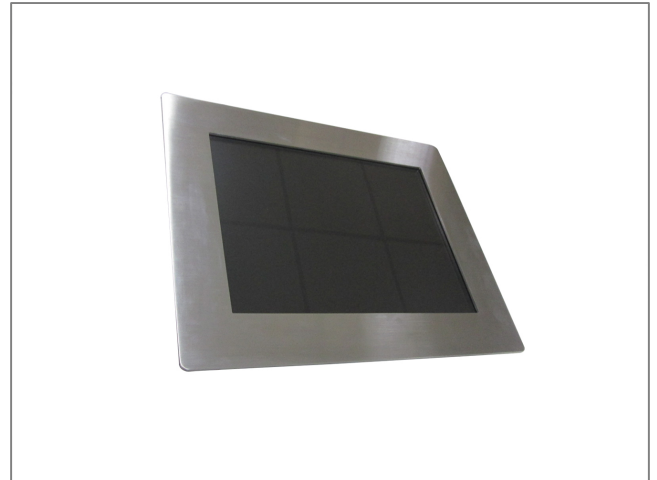
This is subject to change without Notice. Final Drawings Will be Provided for Approval after Order.



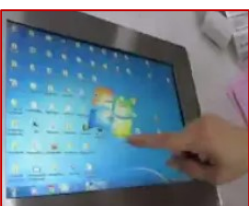
Drawing No.: EPM1500HB-TC-H-10162025-V1



ACTUAL PICTURES:



Reference: SO 121306 | Model: EPM1500HB-TC-H



TOUCH Test
Click image to Watch