

SUNLIGHT READABLE RUGGED COMPLETELY SEALED FULL IP66/NEMA4X STAINLESS STEEL CHASSIS/SURFACE MOUNT



**46" High Brightness Industrial Panel / 1920x1080 / 1500nits,
Stainless 304 enclosure with Full IP65 / wall mount AR glass**
**Remark: This unit designed to be installed under completed shaded area
without direct sunlight. Not facing east and west**

Model: CCHW4600HB-SIP-U1

FEATURES:

- High Contrast color LCD Monitor with resolution up to FULL HD (1920x1080)
 - Completely Sealed FULL IP66/NEMA4X
 - High Shock & Vibration Resistance
 - AR Glass / Eye Bolt x 2EA
 - Air curtain design inside
 - Blanket heater (510W / 220VAC) with Temperature controller installation
 - Blanket heater ON/OFF switch
 - Operation Temp. : -15 degree C to 50C
 - CAT6 DVI extender Receiver / Transmitter (Max. 50 meters)
 - I/O (all connectors are waterproof connectors / 6ft long) : VGA, HDMI, LAN (CAT5 extender for DVI (Please see Note), 100-240VAC power cord (for panel use) and 220VAC power cord (for Heater use).
- Note : The LAN cable length will be based on customer spec..*

SPECIFICATIONS:

DISPLAY	Viewing Size Image	46"
	Active Display Area (mm)	1022(H) x 576 (V)
	Pixel Pitch (mm)	0.53025(H)x0.53025(V)
	Resolution	1920x1080
	Contrast Ratio	4000 : 1 (typ.)
	Color	16.7 M(8bits+colors)
	Brightness	1500nits
	Viewing Angle	-89~89 (H) ; -89~89 (V)
	Recommended Resolution	1920 x 1080 @ 60Hz
POWER	Signal Connector	VGA, DVI, HDMI
	Source	AC100V~AC240V
	Consumption	125W typical, normal operation
OPTIONAL	Management	VESA DPMS Compliant
	Touch	Resistive, PCAP,IR
	High Brightness	1000
	Auto Dimming	YES
	POWER in	DC24V
	Remote Control	YES
	IO	AV

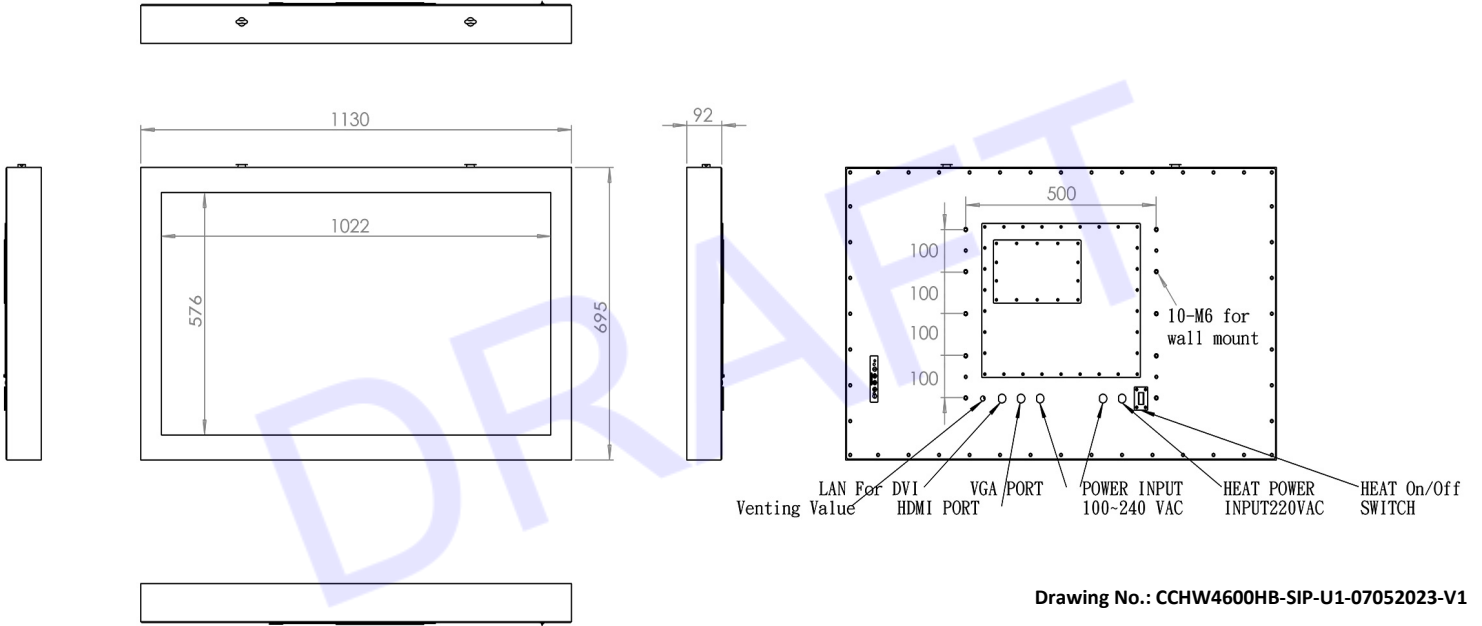
**Specifications subject to change without notice, not responsible for typographical errors.*

APPLICATIONS:



MECHANICAL DRAWING:

This is subject to change without Notice. Final Drawings Will be Provided for Approval after Order.



Drawing No.: CCHW4600HB-SIP-U1-07052023-V1