

# INDUSTRIAL CHASSIS/VESA MOUNT LCD MONITOR



**17.3" Chassis/VESA Mount Design Industrial Panel**  
**1920x1080 / 350nits, AR Glass / Front IP65**  
**I/O: 3G-SDI x1, HDMI x 1 and 12VDC**  
**with external 100-240VAC Power Adapter**

**Model: CCH1700-3G-SDI**

## FEATURES:

- High Contrast color TFT LCD Monitor support resolution up to 1920x1080
- Power management system conforms to VESA DPMS and EPA Energy Star standards.
- Full consideration for touch screen installation and application.
- Universal Power adapter.
- Support DDC1 & DDC2B for Plug & Play compatibility.
- Advanced OSD control for picture quality adjustment.
- Detachable stand for wall-mounting application.
- Heavy duty Monitor with steel frame.
- Custom design by request.

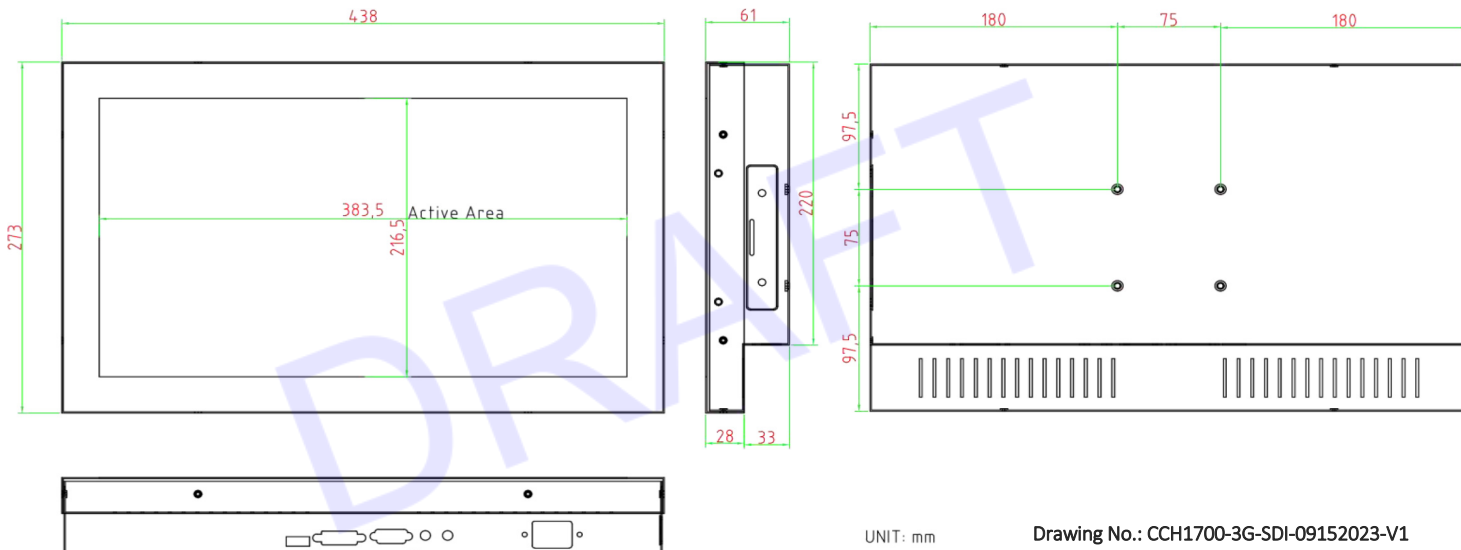
## SPECIFICATIONS:

Display	Viewing Size Image	17"
	Active Display Area (mm)	337.92 (H) x 207.34 (V)
	Pixel Pitch (mm)	0.264 (H) x 0.264(V)
	Resolution	1920x1080
	Contrast Ratio	1000 : 1 (typ.)
	Color	16.7M (6bits+FRC)
	Brightness	350 nits
	Viewing Angle	-85~80(H) ; -85~80 (V)
	Recommended Resolution	1280 x 1024 @ 60Hz, 75 Hz
Power	Signal Connector	VGA,DVI
	Source	12VDC with external 100-240VAC Power Adapter
	Consumption	13W typical, normal operation
Optional	Management	VESA DPMS Compliant
	Touch	Resistive, PCAP
	High Brightness	1000,1500
	POWER in	DC24V,DC 9V~36V
	Auto Dimming	YES
	Remote Control	YES
	IO	AV,HDMI,DP

*\*Specifications subject to change without notice, not responsible for typographical errors.*

## MECHANICAL DRAWING:

*This is subject to change without Notice. Final Drawings Will be Provided for Approval after Order.*

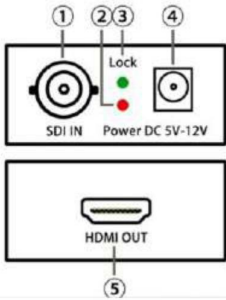


Modified Date: 09-15-2023

## 3G-SDI to HDMI CONVERTER



SDI Coaxial Cable (RG6) Transmission Max 100 Meters

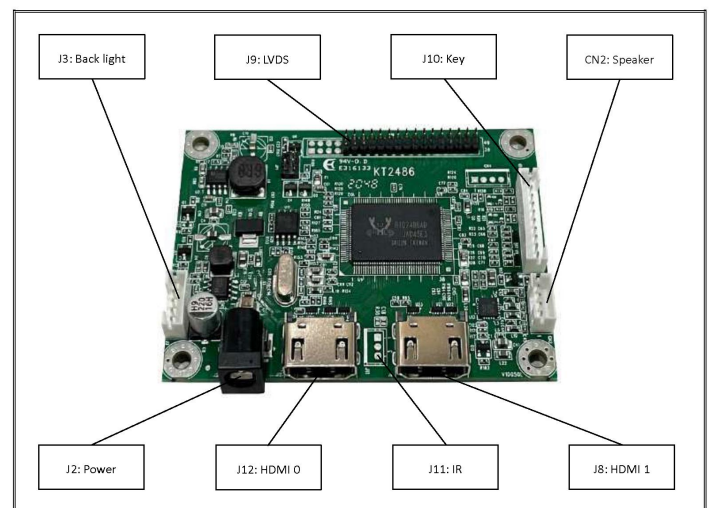
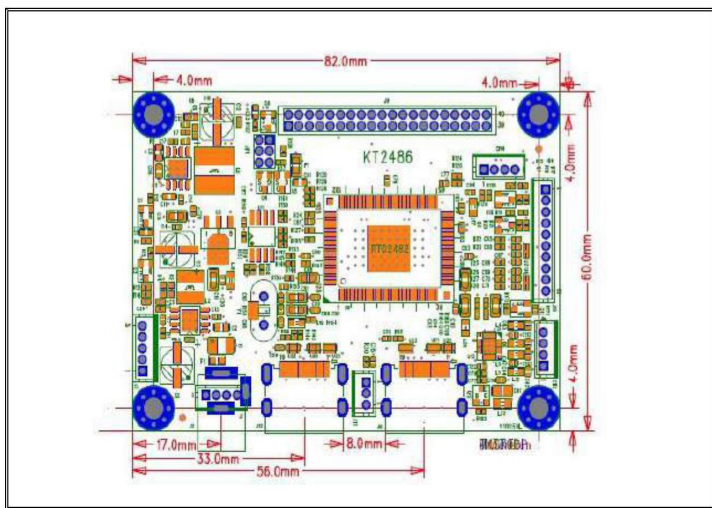


1. SDI Input
2. Power indicator
3. Input indicator
4. Power input
5. HDMI out

### SPECIFICATIONS:

- Supported HDMI 1.1/1.2/1.3
- Input terminal : 1 x BNC ( SD-SDI / HD-SDI / 3G-SDI AUDIO, VEDIO Ssignal )
- Output terminal : 1 x HDMI
- Input equipment : SDI-DVR, professional camera, SDI radio equipment etc.
- Output equipment : TV, Projector, HDMI display etc.
- Supported SMPTE 424M/425M-AB, SMPTE 292M, SMPTE 259M-C
- 3G-SDI transmission speed is 2.970 Gbit/s and 2.970 / 1.001 Gbit/s
- Transferred SDI signal to standard HDMI 720p / 1080p
- Input, output resolution : 480i/576i/720p/1080i/1080p
- DC input 5-12V / 5W

## LCD MONITOR DRIVER BOARD



## APPLICABLE TIMING

Resolution	Refresh Rate	Standard Type
640 x 480	60/75 Hz	VESA
800 x 600	60/75 Hz	VESA
1024 x 768	60/75 Hz	VESA
1280 x 1024	60/70/75 Hz	VESA
1366 x 768	60/75 Hz	VESA
1920 x 1080	60 Hz	VESA

## PINS

### LVDS1/F:

J9 2.0mm 20x2Pin

PIN	Description	PIN	Description
1	10b_E0-	2	10b_E0+
3	10b_E1-	4	10b_E1+
5	GND	6	GND
7	LCD_POWER	8	LCD_POWER
9	LCD_POWER	10	LCD_POWER
11	10b_E2_8b_E0-	12	10b_E2_8b_E0+
13	10b_EC_8b_E1-	14	10b_EC_8b_E1+
15	10b_E3_8b_E2-	16	10b_E3_8b_E2+
17	GND	18	GND
19	10b_E4_8b_EC-	20	10b_E4_8b_EC+
21	10b_O0_8b_E3-	22	10b_O0_8b_E3+
23	GND	24	GND
25	10b_O1_8b_O0-	26	10b_O1_8b_O0+
27	10b_O2_8b_O1-	28	10b_O2_8b_O1+
29	10b_OC_8b_O2-	30	10b_OC_8b_O2+
31	GND	32	GND
33	10b_O3_8b_OC-	34	10b_O3_8b_OC+
35	10b_O4_8b_O3-	36	10b_O4_8b_O3+
37	GND	38	GND
39		40	

### Backlight:

J3 2.0mm 5Pin

PIN	Description	PIN	Description
1	+12V	4	GND
2	GND	5	BL ON/OFF
3	ADJ		

### OSDKey:

J10 2.0mm 10Pin

Board pin	Description	Board pin	Description
1	G_LED	6	Auto
2	GND	7	+
3	R_LED	8	-
4	Power	9	Up
5	Menu	10	Down

### IR:

J11 2.0mm 3Pin

PIN	Description	PIN	Description
1	+3.3V	3	GND
2	IR		

### Speaker

CN2 2.0mm 4Pin

PIN	Description
1	AUD_L
2	GND
3	AUD_R
4	GND