

15" 250nits, 1024x768, Stainless steel 304 enclosures with Full IP66 / VESA mount with Resistive Touch, JIMB-1900-2L / J1900 (2M Cache, up to 2.42GHz Intel Celeron Quad-Core Processor) / RAM 4GB / SSD 256GB Win 10 IoT 2019 LTSC



## MODEL: CCH1500-J-SIP-TR-V4

### FEATURES:

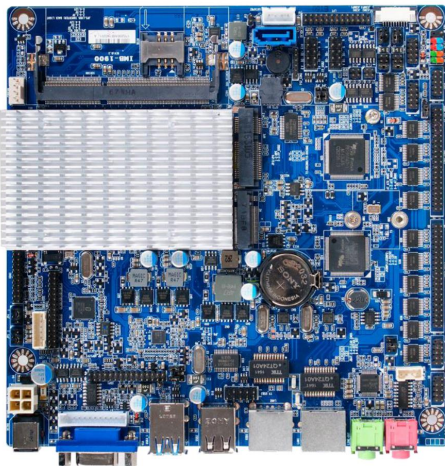
- 15" Industrial Panel / 1024 x768 / 250nits
- Stainless Steel 304 enclosures with Full IP66 / VESA mount
- Resistive Touch
- JIMB-1900-2L / J1900 ( 2M Cache, up to 2.42GHz Intel Celeron Quad-Core Processor ) / RAM 4GB / SSD 256GB
- I/O ( all connectors are waterproof connectors / 6ft long ) : VGA x1, LAN x1, RS232 x1, USB x2, Audio x1 and 12VDC with external power adapter
- Win 10 IoT 2019 LTSC

### SPECIFICATIONS:

DISPLAY	Viewing Size Image	15"
	Active Display Area (mm)	305.50 (H) x 229.50 (V)
	Pixel Pitch (mm)	0.297 (H) x 0.297(V)
	Resolution	1024 x 768
	Contrast Ratio	700 : 1 (typ.)
	Color	16.2M( 6bits+FRC)
	Brightness	250 cd/m <sup>2</sup>
	Viewing Angle	-70~70 (H) ; -60~60 (V)
	Recommended Resolution	1024 x 768 @ 60H, 75Hz
POWER	Source	12V DC with external power adapter
	Consumption	25W typical, normal operation
	Management	VESA DPMS Compliant

*\*Specifications subject to change without notice, not responsible for typographical errors.*

### MOTHERBOARD SPECS:



- Intel Celeron J1900 (2.0 GHz) quad-core processor
- Support DirectX 11 3D Graphics Acceleration
- Support DDR3L 1333
- Integrated HD Audio CODEC
- Support 2\*PCI Express Gigabit LAN
- Support Power Onboard(12V)
- Onboard 1\* MiniPCI-E connector
- Onboard 1\* M.2 connector(2242/2260)
- 2 Phase CPU Power Support
- Support 1\* USB3.0, 9\* USB2.0
- Support 12\* COM(COM1/2 Support RS232/422/485)
- Support Amplifier function(3W)
- Support Thunder Protection Function
- Thin mini ITX Form Factor(170mm X170mm)

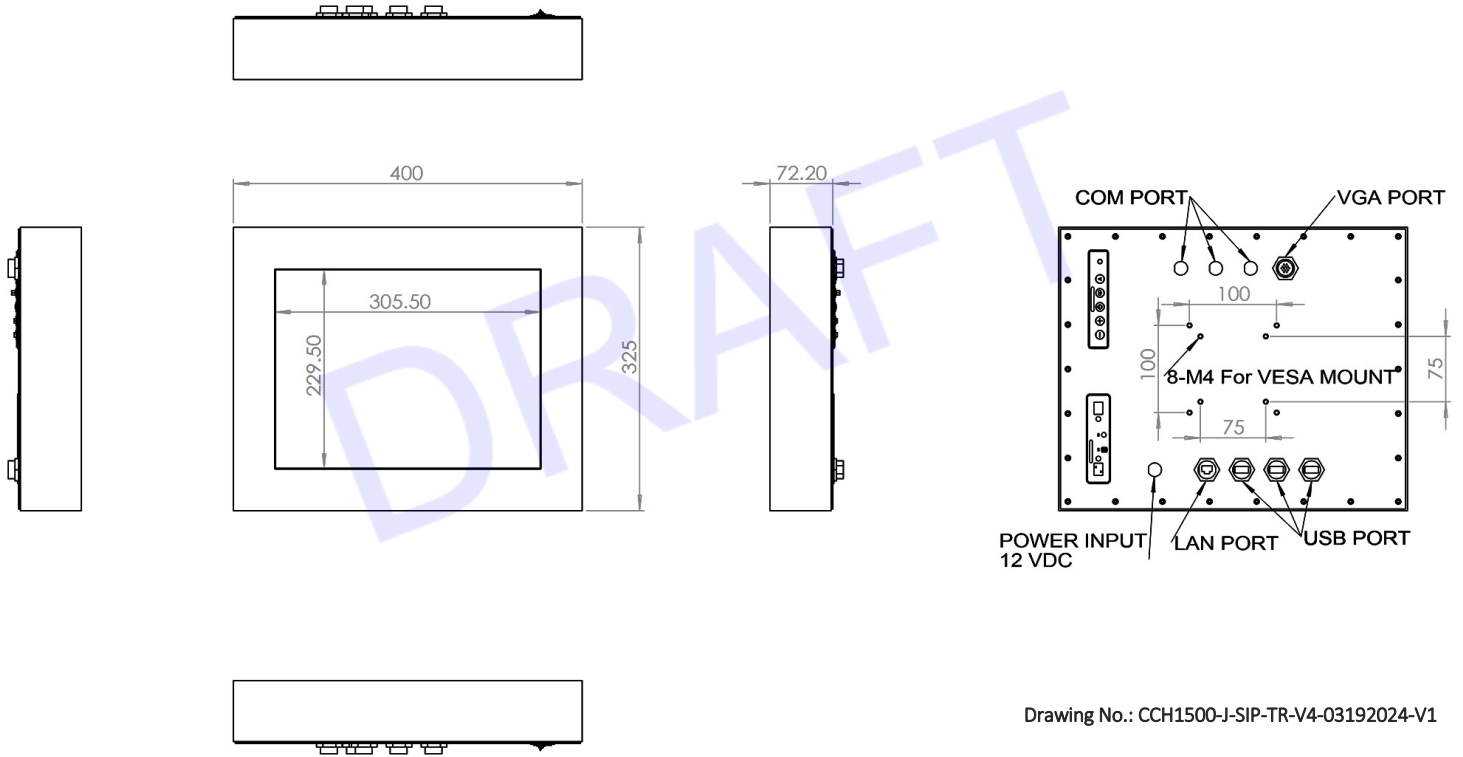


<b>CPU-Chipset</b>	INTEL Celeron J1900 (2.0 GHz) Quad-Core Processor
<b>I.O Chipset</b>	2 Phase CPU Power Support
	FINTEK F81866AD-I
<b>Memory</b>	1*SO-DIMM slot
	Support DDR3L 1333
	Max. capacity of system memory up to 8GB
<b>Expansion Slots</b>	1* Mini PCI-E connector
<b>Storage</b>	1* Serial ATA2 3Gb/s connector
	1* M.2 Connector(2242/2260)
<b>Audio</b>	ALC662 Audio CODEC
<b>Ethernet LAN</b>	HD Audio CODEC REALTEK® RTL8111G Chip
<b>LVDS</b>	2* PCI Express Gigabit LAN
	Onboard 24-bit Dual channel(Co-Lay EDP)
<b>USB</b>	1* USB3.0 Port
	9* USB 2.0 (3 distribute in back panel, 6 distribute in mid-board)
<b>Special Features</b>	Support CPU Smart Fan
	Support Watch dog Technology
	Support GPIO Technology
	Support VGA header
	Support HDIM header
	Support Power On board
	Support Amplifier function(3W)
	Support 2*RS422/RS485/RS232 COM ports
	COM 1/COM2 Support 5V/12V TTL
	Thunder Protection Function
All Solid Capacitor design	
All Power Pack MOSFET design	
<b>Back Panel I / O</b>	2* USB3.0 port
	2* USB 2.0 ports
	2* RJ-45 ports
	1* Line-out connector
	1* MIC
	1* VGA port (Max. Resolution: 1920*1200@60Hz)
	1* 12V DC in

<b>Internal I / O</b>	3* USB 2.0 headers for 6 USB 2.0 ports
	1 * CPU / Chassis Fan connectors
	12* COM headers(COM1/COM2 For RS422/RS485/RS232 and TTL )
	1* Parallel header
	1* PS2/KB header
	1* 4-pin ATX 12V Power connector
	1* 4-pin SATA Power connector
	1* 12-pin VGA header (Max. Resolution: 1920*1200@60Hz)
	1* 20-pin HDMI header (Max. Resolution: 1920*1200@60Hz)
	1* 24-bit Dual Channel LVDS header (Max. Resolution: 1920*1200@60Hz)
	1* GPIO header
	1* Mini PCI-e connector
	1* M.2 Connector(2242/2260)
	1* SATA Connector
1* Speaker header(Amplifier function 3W)	
1* Front panel header	
1* SIM Card socket	
<b>BIOS</b>	AMI 64MB SPI ROM
<b>Temperature</b>	Operating: 0°C ~ 70°C
	Storage: -20°C ~ 85°C
<b>Form Factor</b>	Thin mini ITX Form Factor(170mm X 170mm)
<b>Accessory</b>	SATA Cable SATA Power cord COM Cable I/O Shield
<b>OS Support</b>	Windows 7 (32/64-bit), Windows 8.1 (32/64-bit), Windows 10 (32/64 Bit) Windows Server 2012R2, Windows Server 2016, Windows Server 2019 Linux: Cent OS, Debian, Fedora, OpenSUSE, Ubuntu, pfSense, FreeNAS, RedHat

# MECHANICAL DRAWING:

This is subject to change without Notice. Final Drawings Will be Provided for Approval after Order.



Drawing No.: CCH1500-J-SIP-TR-V4-03192024-V1

