

HIGH BRIGHTNESS RUGGED COMPLETELY SEALED FULL IP67 STAINLESS STEEL CHASSIS/SURFACE MOUNT

12.1" Brightness 1000nits, 1024x768 with 5 Wire Resistive Touch Screen and USB Controller Based on Default 3 Set Waterproof Connectors Waterproof Connectors & Cables: HDMI,VGA USB for Touchscreen & Power 6ft long only with external 100~240V AC + Adapter



MODEL: CCH1210HB-SIP-TR-67

FEATURES:

- High Contrast color TFT LCD Monitor support resolution up to (1024 x 768)
- Widely used in chemical industry, food industry, medical devices, appliances etc. with good corrosion resistance
- Wide Temp. : -30°C ~ 80°C
- **With Sun Hood**
- **Remark: This unit designed to be installed under completed shaded area without direct sunlight. Not facing east and west**

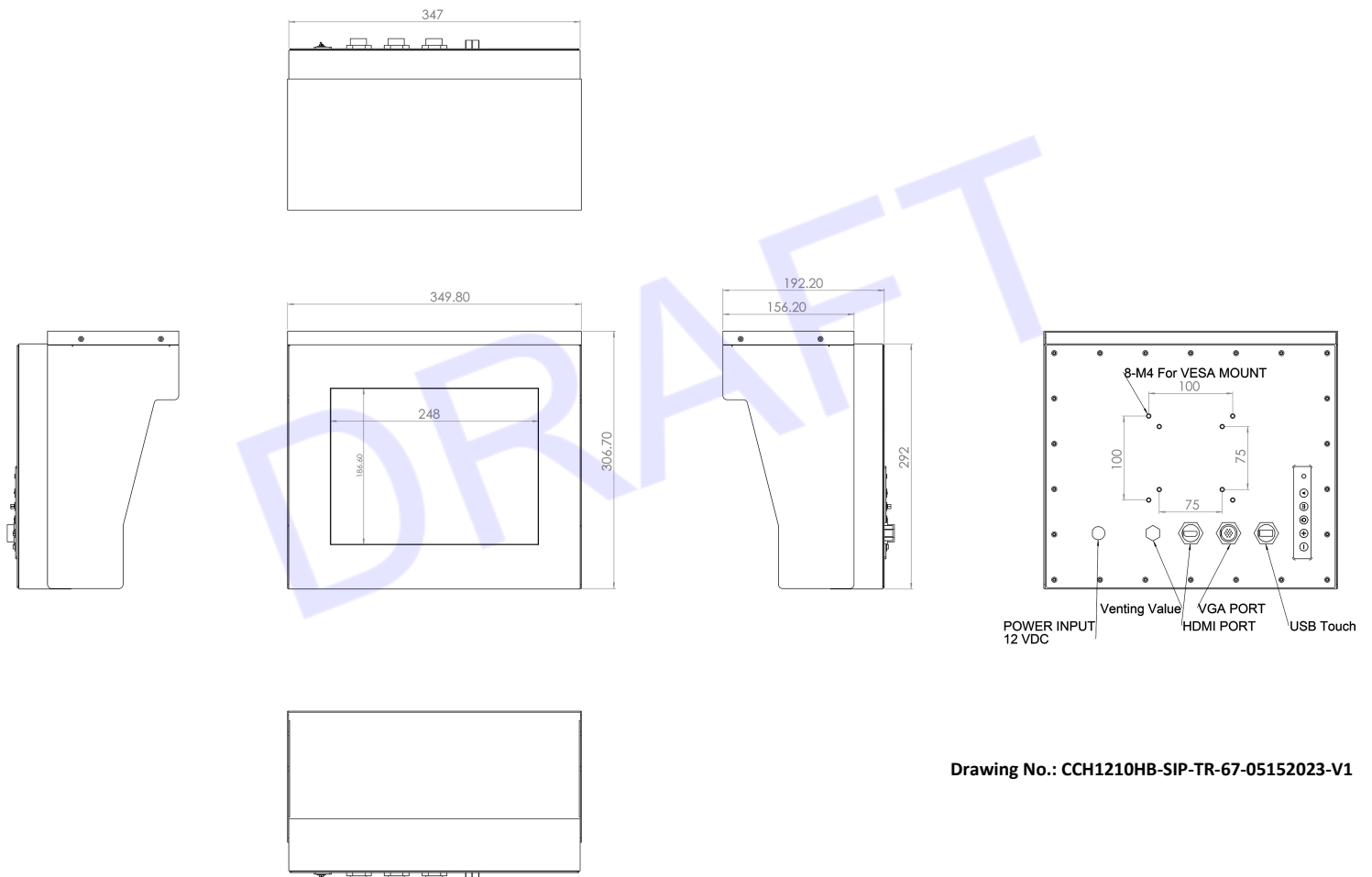
SPECIFICATIONS:

Viewable Size Image	12.1"				
Active Display Area(mm)	245.76 (H) x 184.32 (V)				
Number of Pixels	1024x768				
Contrast Ratio	700:1 (typ.)				
Display Color	262K (6 bits/color)				
Brightness(cd/m ²)	1000 (typ.)				
Viewing Angle(CR>=10)	-80~80 (H); -70~70 (V)				
Synchronization Range Horizontal/Vertical	31.5~46.9KHz / 60~75Hz				
Recommended Resolution	1024x768@60Hz, 75Hz				
Signal Connector	HDMI, VGA, USB for Touch				
I/O	3 pin Power Cable (IP67 connector); 10 pin VGA Cable (IP67 connector); HDMI (IP67 connectors); USB Cable for Touch (IP67 connector) Optional for RS232 for touch (IP67 connector)				
Power Source	12V DC in, with External AC to DC Adapter (100~240 VC)				
Power Consumption	15W typical, normal operation				
Power Management	VESA DPMS Compliant				
Plug & Play	VESA DDC 1/2B				
Optional Touch Screen	Resistive and PCAP Touch				
Optional video	Yes				
Optional Optical bonding	For Moisture Prevention				
Stainless Material	CNS	JIS	ASTM	AISI	DIM
	304	SUS304	S30400	304	1.4301

***Specifications subject to change without notice, not responsible for typographical errors.**

MECHANICAL DRAWINGS:

This is subject to change without Notice. Final Drawings Will be Provided for Approval after Order.



Drawing No.: CCH1210HB-SIP-TR-67-05152023-V1

