

INDEX

- 1. General Description**
- 2. Dimension & Pin definition**
- 3. Applicable timing**
- 4. LCD OSD Setting**
- 5. Burn in mode**

1. General Description

1.1 Introduction

The CAD005 is design for Full HD TFT flat panel interface board, the CAD005 has below features:

- HDMI X 1
- DVI-I X 1 option
- VGA X 1
- Remote control OSD option
- Audio 2W X 2
- +5V Output
- I2C I/F

1.2 Electrical Characteristics

Item	Symbol	Min	Max	Unit
Power Supply	Vs	11.5	12.5	V
Panel Power	Vp	4.8	12	V
Brightness	BL-ADJ	0.1	3.6	V
Panel On/Off	ON_OFF	0.5	5	V

1.3 Power consumption

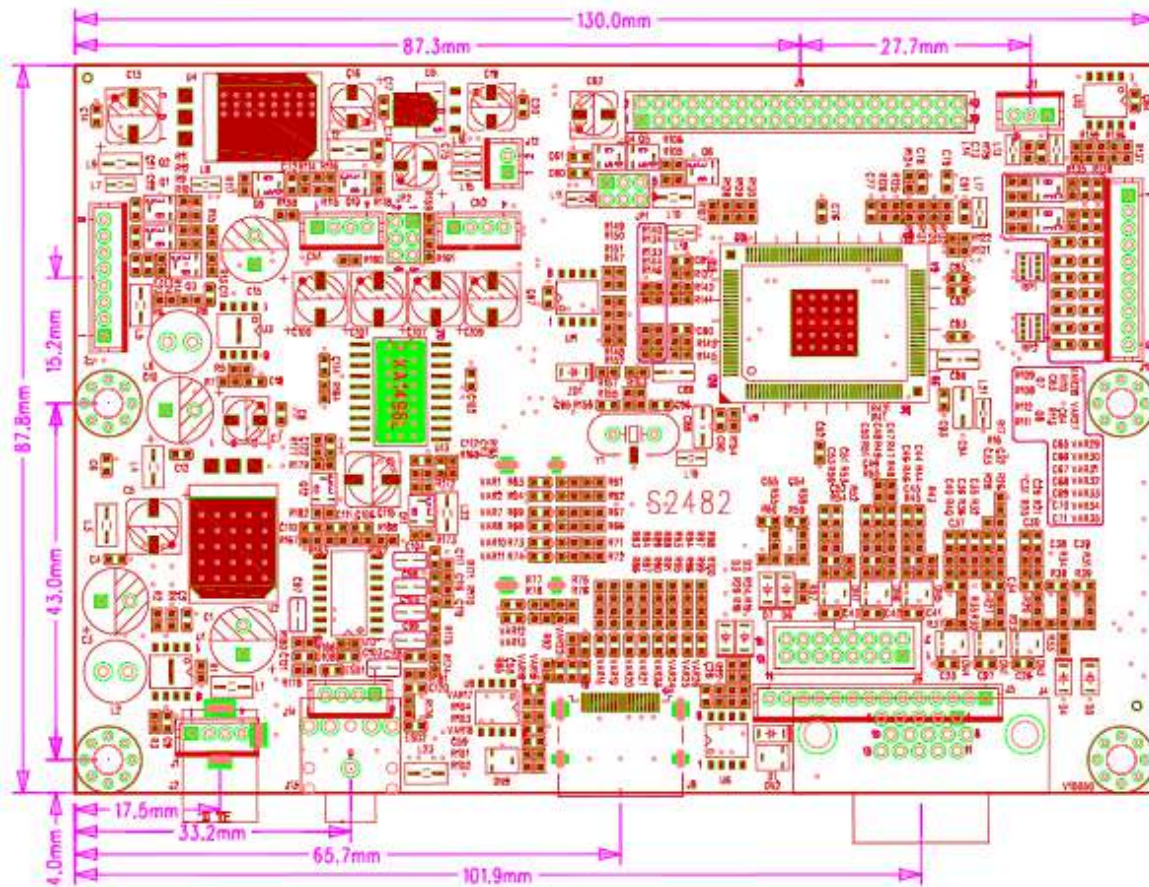
Resolution: 1920 X 1080 60Hz

VIN: DC 12V

Item	Min	Max	Unit
A/D Board only	5	7.5	W
Power saving	0.7	1	W

2. Dimension & Pin definition

2.1 Dimension: 130mm (L) * 87.8 mm (W)* 12mm(H)



2.2 PIN DESCRIPTION

LVDS OUT (J9) 2.0mm

PIN	FUNCTION	PIN	FUNCTION
1	10b_E0-	2	10b_E0+
3	10b_E1-	4	10b_E1+
5	GND	6	GND
7	VCC	8	VCC
9	VCC	10	VCC
11	10b_E2_8b_E0-	12	10b_E2_8b_E0+
13	10b_EC_8b_E1-	14	10b_EC_8b_E1+
15	10b_E3_8b_E2-	16	10b_E3_8b_E2+
17	GND	18	GND
19	10b_E4_8b_EC-	20	10b_E4_8b_EC+
21	10b_O0_8b_E3-	22	10b_O0_8b_E3+
23	GND	24	GND
25	10b_O1_8b_O0-	26	10b_O1_8b_O0+
27	10b_O2_8b_O1-	28	10b_O2_8b_O1+
29	10b_OC_8b_O2-	30	10b_OC_8b_O2+
31	GND	32	GND
33	10b_O3_8b_OC-	34	10b_O3_8b_OC+
35	10b_O4_8b_O3-	36	10b_O4_8b_O3+
37	GND	38	GND
39	NC	40	NC

Inverter (J3)

WAFER 8pin 2.0mm

PIN	Function	PIN	Function
1	+5V	2	+12V
3	GND	4	Brightness
5	GND	6	ON/OFF
7	5V_STB	8	PS_ON

OSD KEY (J10)

WAFER 10pin 2.0mm

PIN	FUNCTION	PIN	FUNCTION
1	Green-LED	2	GND
3	RED-LED	4	Power-KEY
5	Menu-KEY	6	Auto-KEY
7	Right-KEY	8	Left-KEY
9	Up-KEY	10	Down-KEY

Extend I/F (J6)

WAFER 6pin 2.0mm

PIN	FUNCTION	PIN	FUNCTION
1	12V	2	12V
3	GND	4	GND
5	VGA B/Pb	6	VGA G/Y
7	GND	8	GND
9	EX AUDIO_R	10	EX AUDIO_L
11	POWER Control	12	IR_OUT
13	-	14	VGA R/Pr
15	H SIN	16	V SIN

IR I/F (J11)

WAFER 7pin 2.0mm

PIN	FUNCTION
1	3.3V
2	IR_IN
3	GND

Speaker (CN2)

WAFER 4pin 2.0mm

PIN	Function	PIN	Function
1	SPK Lout	2	GND
3	SPK Rout	4	GND

3. Applicable Timing

Resolution	Refresh Rate	Horizontal Frequency	Pixel Frequency	Standard Type	Remarks
640 x 480	60 Hz	31.50 KHz	25.175 MHz	Industrial Standard	
	75 Hz	37.50 KHz	31.500 MHz	VESA Standard	
800 x 600	60 Hz	37.9 KHz	40.000 MHz	VESA Guideline	
	72 Hz	48.10 KHz	50.000 MHz	VESA Standard	
	75 Hz	46.90 KHz	49.500 MHz	VESA Standard	
1024 x 768	60 Hz	48.40 KHz	65.000 MHz	VESA Guideline	
	70 Hz	56.5 KHz	75.000 MHz	VESA Standard	
	75 Hz	60.00 KHz	78.750 MHz	VESA Standard	
1280 x 1024	60 Hz	64.00 KHz	108.000 MHz		
1440 x 900	60Hz	59.9KHz	106.500MHz		
	75Hz	75.0KHz	136.750MHz		
1920 X 1080	60Hz	59.9KHz	106.500MHz		

4. LCD OSD Setting

4.1

Color



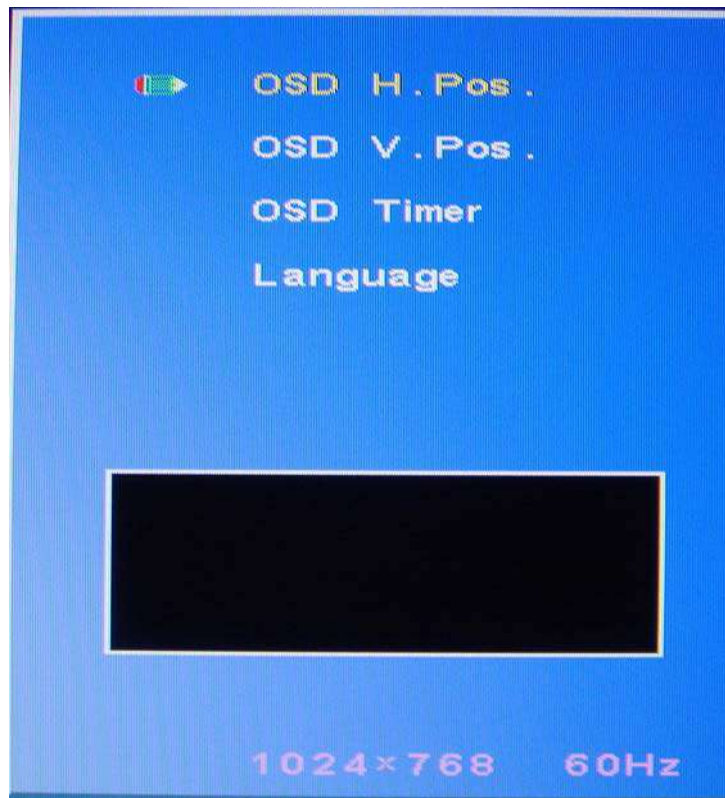
4.2

Image setting



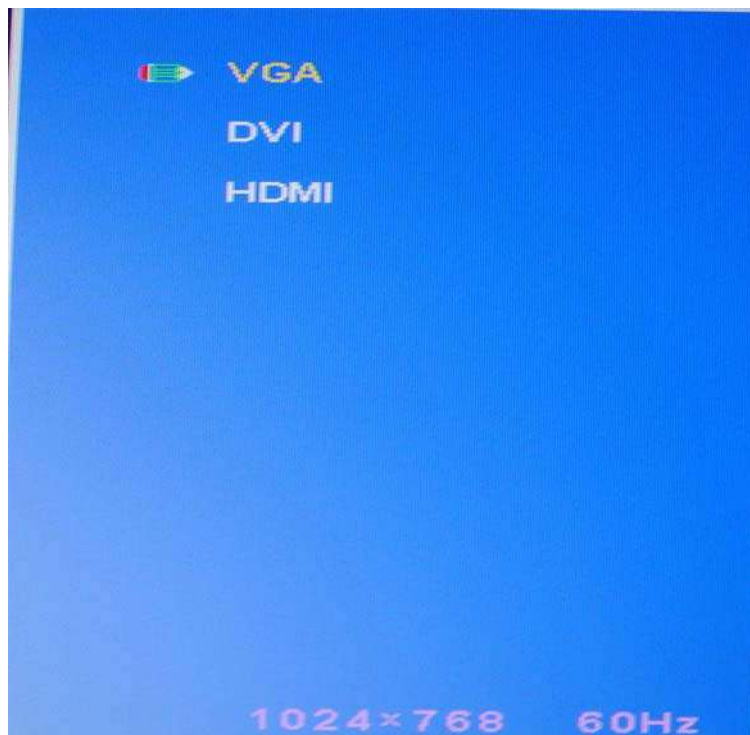
4.3

OSD



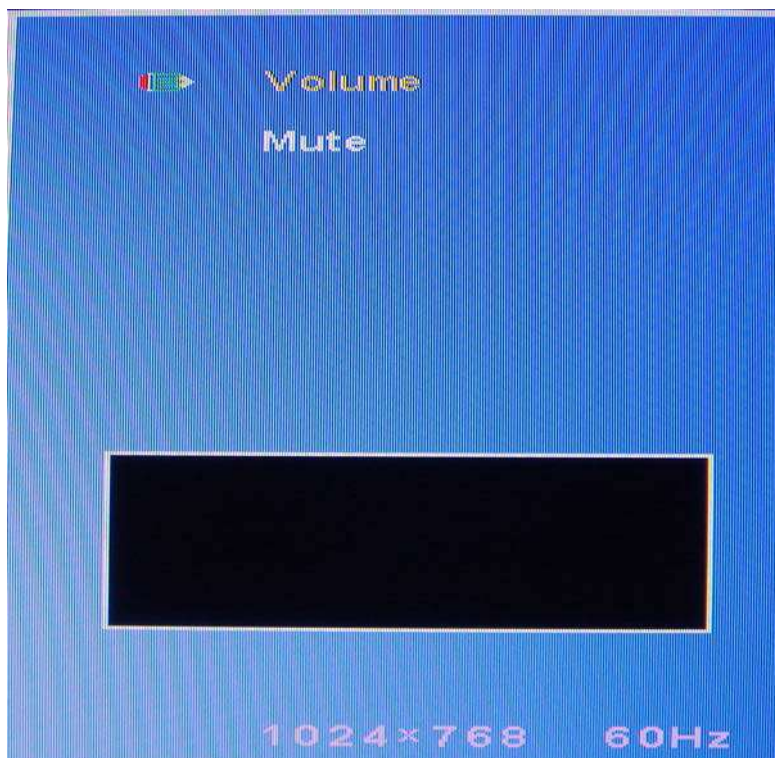
4.4

Source



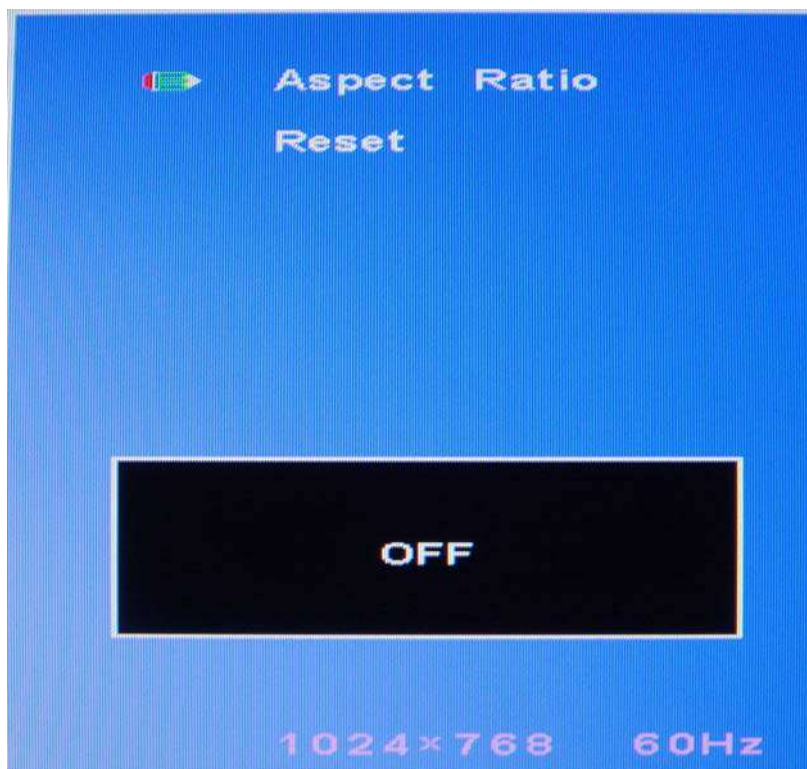
4.5

Audio



4.6

Special



5. Burn in mode

在 PC mode 下, 同時按 “menu” key & “power” key 則進入 “Burn in” 燒機模式,
當 VGA 信號輸入時, 則解除燒機模式.