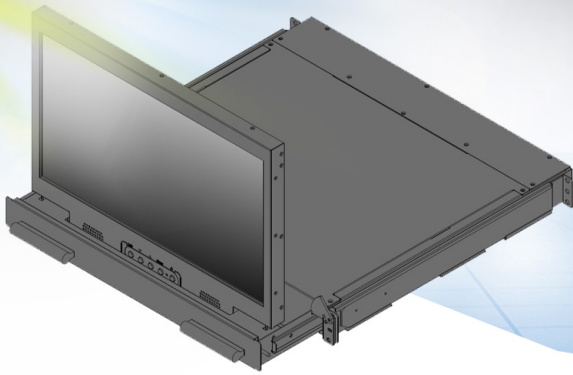


1U RACKMOUNT MONITOR DISPLAY

1U Rackmount Wide 17.3" TFT LCD Rackmount Monitor Drawer
 1920x1080, 1000nits High Brightness LCD, VGA + DVI-D + HDMI
 w/ speaker (for HDMI only) with 2-point lock
 (pin-lock on both sides) on the front panel 0 to 70C
 Projected Capacitive touch screen
 10-pt the height of LCD panel
 in 90 degree is less than 13.5" tall

Model: ANPW117HB-PCAP



FEATURES:

- 1U Foldable Compact 19 inch rack mountable
- 17.3 inch wide screen 1920x1080 high resolution
- DVI-D, VGA, HDMI, Audio input
- Heavy duty steel chassis construction
- Front osd control buttons to optimized display
- Build in 2x 2watts stereo speakers

OPTION:

- Display port input
- DC 9~36 V power input
- AR Hardness glass

SPECIFICATIONS

LCD CHARACTERISTICS	
Screen Size	17.3"
Backlight Type	LED
Resolution	1920*1080
Contrast Ratio	400:1
Brightness (cd/m2)	1000
View Angles (H/V)	140/120
Pixel Size (HxV) mm	0.1989x0.1989
Max. Color	262K

INPUT SIGNALS	
DVI-D	DVI-D 24Pin Connector (Female)
VGA	D-SUB 15Pin Connector (Female)
HDMI	x1
Audio	3.5" Jack
Power Input	Standard IEC Inlet
Touch-USB (option)	USB A Type connector
Touch-RS232 (option)	D-SUB 9P connector (Female)

POWER SPECIFICATIONS	
AC Power Input	Standard IEC Type Power Cord with Internal Power adapter, 100-240V AC Input
Wide Range DC Power Input (option)	Screw Type Terminal Block with internal wide Range DC 9-36V power module

USER CONTROL INTERFACE	
Power ON / OFF via Front Button	
Power Mode Status LED indicator	
OSD (On Screen Display) Buttons	

MECHANICAL AND ENVIRONMENT	
Height	1U Foldable
Rack Depth	15.5" to 30" (cabinet front rail to rear rail)
Mounting	Rack Mount
Construction	Metal Housing
Operating Temperature	0 - 70 deg. C
Operating Humidity	5% - 95% (non -condensing)
Anti-Vibration	5 - 500 Hz / 1 Grms PTP
Anti-Shock	15G / Peak (11 ms)
Physical Dimension (WxHxD)	443 x 44 x 425 (mm)
Packing Dimension (WxHxD)	715 x 140 x 600 (mm)
Net Weight / Gross Weight	12.5 / 17 (KGs)
Certification and Approvals	CE / FCC / RoHS

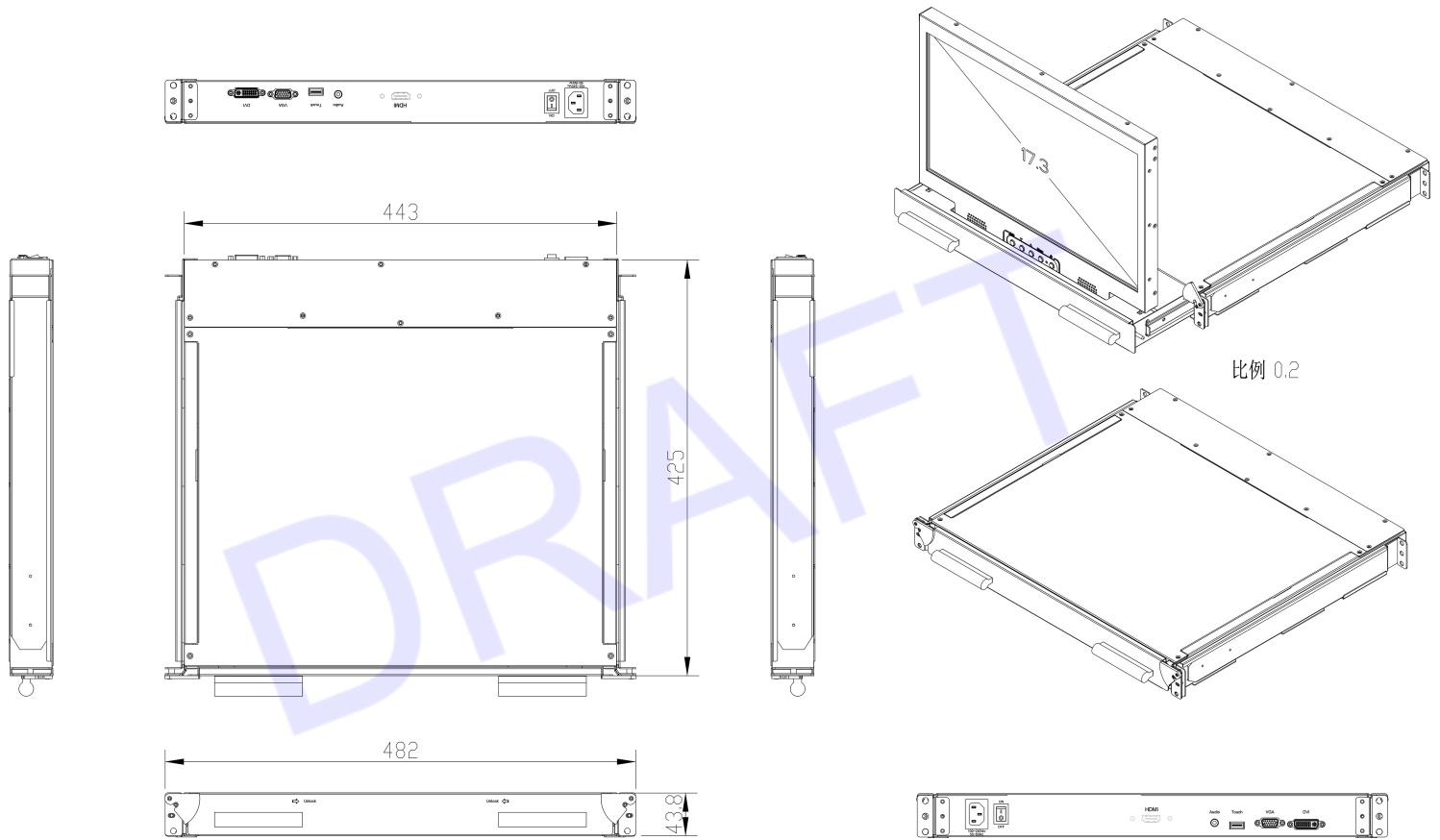


REAR of ANPW117HB-PCAP

*Specifications subject to change without notice, not responsible for typographical errors.

MECHANICAL DRAWINGS:

This is subject to change without Notice. Final Drawings Will be Provided for Approval after Order.



Drawing No.: ANPW117HB-PCAP-07072022-V1