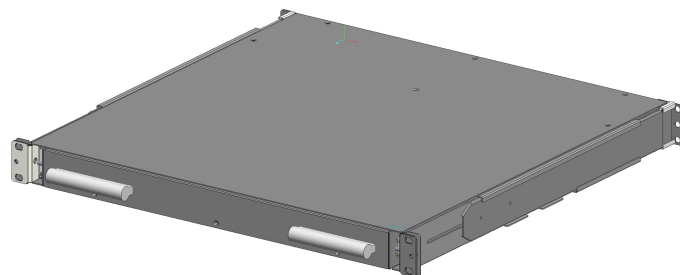
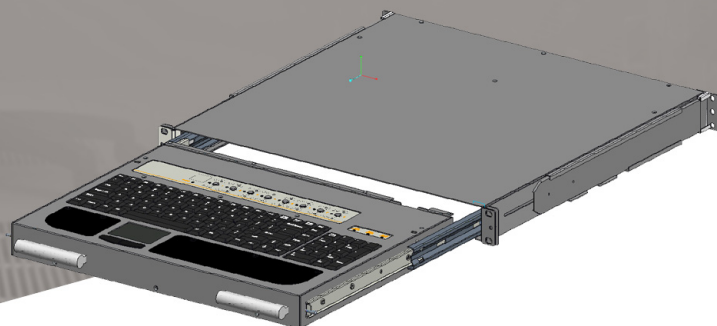


1U KEYBOARD KVM DRAWER

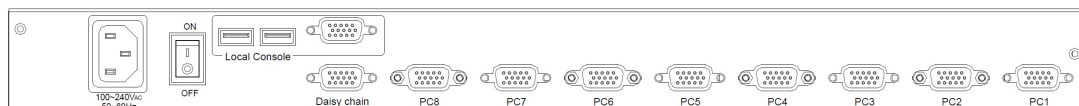
1U Rackmount USB Keyboard 8-Ports KVM
w/ 8pcs NB-6 KVM Cable, Notebook Key w/ Touchpad

Model: AK-S801e



FEATURES

- Support combo interface, VGA-USB & VGA-PS/2.
- 104-key keyboard with touch pad mouse
- Port selection via push buttons or On-Screen-Display (OSD).
- Dedicated daisy chain port to expand up to 240 servers.



Rear of AK-S801e

SPECIFICATIONS

Direct no. of Computers	8
Maximum no. of Computers	232(Daisy Chain)
Port Selection	Push Button, OSD or Hotkey
Local Console	1x HD DB15 for VGA (up to 1920x1440 resolution) 2x USB Type A for external KB / Mouse
KB/Mouse Emulation	USB & PS2
Rack Depth	450 mm to 650mm (rack cabinet front rails to rear rails)
Power	100-240V AC 50/60Hz via IEC Type power cord
Environment	Operation temp: 0 to 50°C Storage temp: -20 to 60°C Humidity: 10% - 90%, non-condensing Shock: 10G acceleration (11ms duration) Vibration: 17 to 500Hz 1G PTP
Physical Dimensions / Net Weights	443x42x453mm (WxHxD) /14KG
Packing Dimensions / Gross weights	605x168x700mm (WxHxD) /17KG

Option Relate Item

AB-6	1.8meter 2-in-1 KVM Cable-USB&VGA	AD-6	1.8meter 3-in-1 KVM Cable-PS/2&VGA
AB-10	3.0meter 2-in-1 KVM Cable-USB&VGA	AD-10	3.0meter 3-in-1 KVM Cable-PS/2&VGA
AB-15	5.0meter 2-in-1 KVM Cable-USB&VGA	AD-15	5.0meter 3-in-1 KVM Cable-PS/2&VGA

**Specifications subject to change without notice, not responsible for typographical errors.*