



Single Touch Driver

Installation and Setup

www.SuntronicLCD.com
EMAIL: Sales@SuntronicLCD.com
WEB: www.SuntronicLCD.com

Single Touch Driver

Just like a traditional mouse, it recognises a single finger touch, drag, and pinch and zoom

Installation instructions for
MS Windows

Linux (Ubuntu/Kubuntu)

Linux (Fedora)

Mac OS

Set up instructions for all drivers

Single Touch Driver

MS Windows

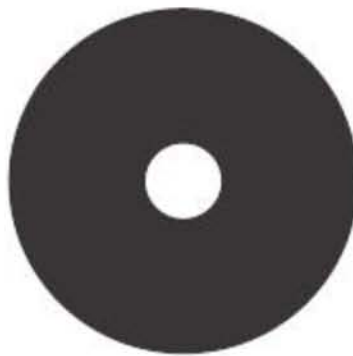
WMA9

Stage 1

Installing single touch driver for MS Windows from DVD

The single touch driver software is available as a downloadable file

The driver software is also included in the Windows folder within the touchfoil™ driver DVD



Supported system platforms:

Windows XP
Windows Vista
Windows 7 (32bit/64bit)

STEP 1

Insert the touchfoil™ driver DVD into your computer DVD drive. If the installation does not start automatically browse to the DVD drive, right click the drive name and then do one of the following:

In Windows 7 or Windows Vista, click **Install** or **run the program**

In Windows XP, click **Autoplay**

STEP 2

The following menu will appear:



Click on install **the touchfoil driver** and follow the on screen instructions

Once you have finished your installation click on **exit** to exit the installation



During install the following message appears,. If Java is already installed please select **no** as a reinstall is not required

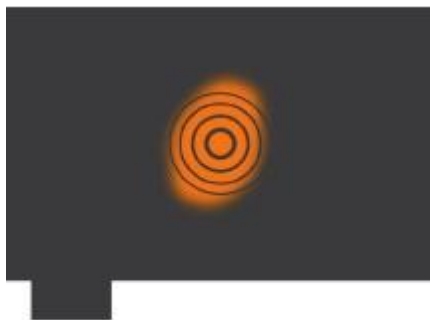


If you wish the driver to automatically start after installation click on the **launch driver** check box



Stage 2

Set up single touch driver for touchfoil™



Set up **single touch driver** for the touchfoil™ page 16

Installation tips page 21



Single Touch Driver

Linux (Ubuntu/Kubuntu)

LMA9

Stage 1

Installing Ubuntu single touch driver from CD

The single touch driver software is available as a downloadable compressed .tar file,

The driver software is also included in the Linux folder within the **touchscreen** driver DVD



Systems platforms:
Ubuntu 9.04, 10.04, 11.4
Kubuntu 10.04, 11.4

STEP 1

Insert DVD and copy the **Linux folder** to your desktop or download and save to your desktop

Open a terminal window and navigate to the Linux folder

STEP 2

The application is delivered as a zipped archive

`touchfoildriver-U-LMA9-install.tar.gz`

STEP 3

To extract

```
tar zxvf touchfoildriver-U-LMA9-install.tar.gz
```

Navigate to the extracted directory `cd touchfoildriver-LMA9install`

Now type the following: `sudo ./lma9install`

(Root privileges are needed for a successful installation) enter root password

```
Terminal
File Edit View Terminal Help
milesj@ubuntu:~/lma9touchfoils$ sudo ./lma9install
```

STEP 4

The install script:

Will request you accept the license agreement

It will check for the required java runtime libraries, if not found it will install them

The application will be installed into `/usr/local/touchfoildriver-LMA9`, **do not change** as management scripts look for this pathname

The touchfoil™ driver requires root UID to run, the script will add an authorisation file in `/etc/udev/rules.d`

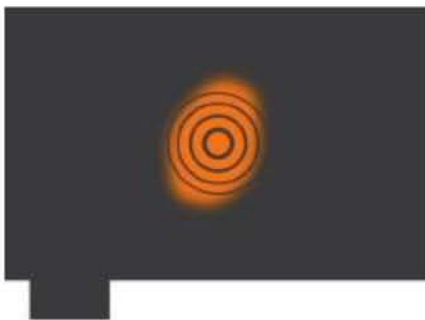
The script will ask if the **touchscreen driver** needs to be started on system boot-up. If this is required it will create the appropriate entry in the current users autostart directory and a desktop shortcut will be placed on the users' desktop to manage the single touch driver user interface

The script will continue and start the single touch setup and user interface

Internet access is mandatory for this step

Stage 2

Set up single touch driver for touchfoil



Set up single touch driver for the touchscreen, page 16

Installation tips, page 21



Single Touch Driver

Linux (Fedora)

LMA9

Stage 1

Installing Fedora single touch driver from CD

The single touch driver software is available as a downloadable compressed .tar file

The driver software is also included in the Linux folder within the **touchscreen** driver DVD



Systems platforms:
Fedora13 (Goddard)

STEP 1

Insert DVD and copy the **Linux folder** to your desktop or download and save to your desktop

Open a terminal window and navigate to the Linux folder

STEP 2

The application is delivered as a zipped archive

`touchfoildriver-F-LMA9-install.tar.gz`

STEP 3

To extract [copy to a temporary folder or user area]

`tar zxvf touchfoildriver-F-LMA9-install.tar.gz`

Now change into the extracted directory

`cd touchfoildriver-LMA9install`

STEP 4

Now type the following:

`./lma9install` (Root privileges are needed for a successful installation) enter root password

STEP 5

Internet access is mandatory
for this setup

```
milesj@FedoraTest2:~/Desktop/TESTAREA/lma9touchfoil
File Edit View Terminal Help
[milesj@FedoraTest2 lma9touchfoil]$ ./lma9install
```

The install script will run

It will request you accept the license agreement. It will then check for the required java runtime libraries, if not found it will install them

The application will be installed into `/usr/local/touchfoildriver-LMA9`, do not change as management scripts look for this pathname

The driver requires a root UID to run, the script will add an authorisation file in `/etc/udev/rules.d`

The script will ask if the **touchscreen driver** needs to be started on system boot-up, if required it will create the appropriate entry in the current users autostart directory

A desktop shortcut will be placed in the user's desktop to manage the Controller user interface

The **touchscreen** driver will now automatically start

Stage 2

Set up single touch driver for touchfoil



Set up single touch driver for the touchfoil, page 16

Installation tips, page 21

Single Touch Driver

MacOS

MMA9

Stage 1

Installing MacOS single touch driver from CD

The single touch driver software is available as a downloadable package

The driver software is also included in the Mac folder within the touchscreen driver DVD



System platforms:
Leopard
Snow Leopard
Lion

STEP 1

Insert DVD and copy MacOS folder to your desktop or download and save to your desktop

The application is delivered as a standard Apple Mac Package touchfoildriver-MMA9.mpkg



STEP 2

Open the package and the following Menu will appear

Follow the onscreen instructions, which will take you through the following steps:

Introduction

Readme

License agreement

Please accept Destination **Do Not Change Installation from default**
/Applications/touchfoildriver-MMA9

Installation

Requires root privileges **type your own password**
Installs single touch driver and desktop short cut

Summary

Install complete, single touch driver will automatically start



STEP 4

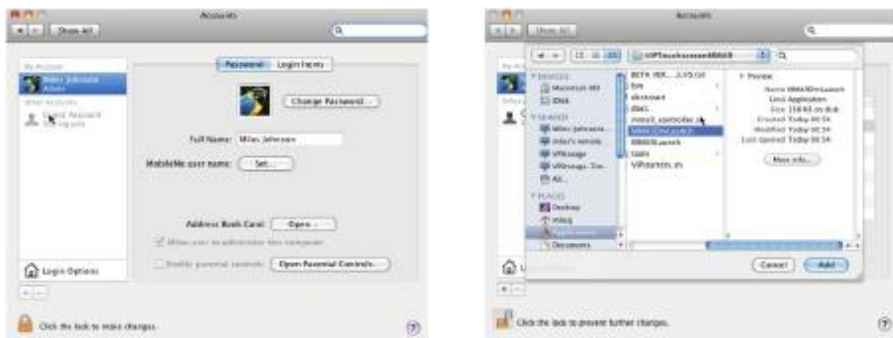
Instructions on how to auto start single touch driver on user login

Navigate to system preferences

Open user accounts

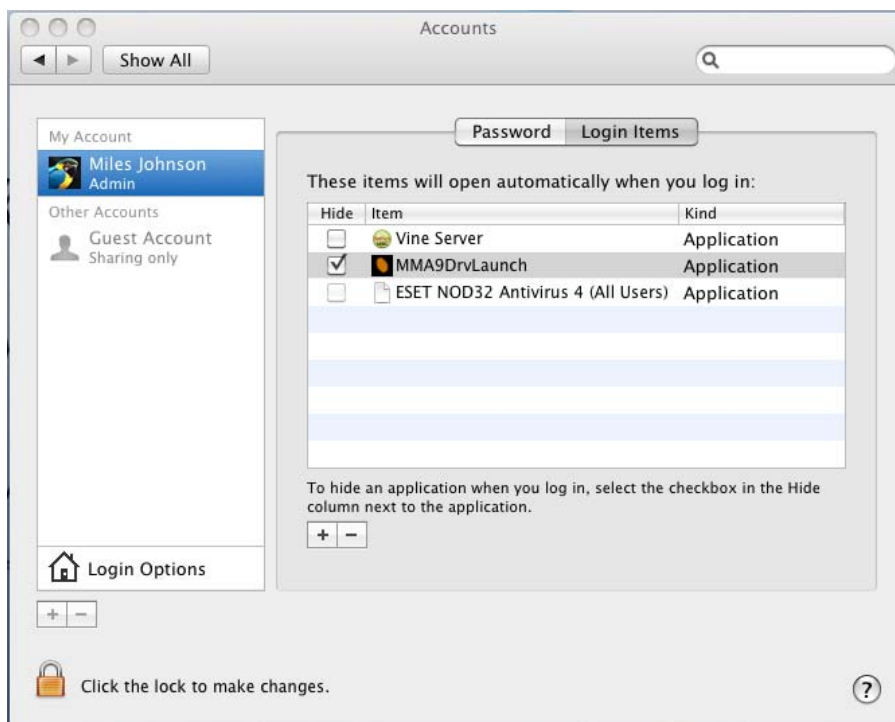
Open the **Login Items** and click the + sign at GUI bottom left corner

Navigate to **/Applications/touchfoildriver-MMA9/MMA9DrvLaunch** and **Add**
This will add the MMA9DrvLaunch program to the users login procedure to launch the single touch driver automaticall



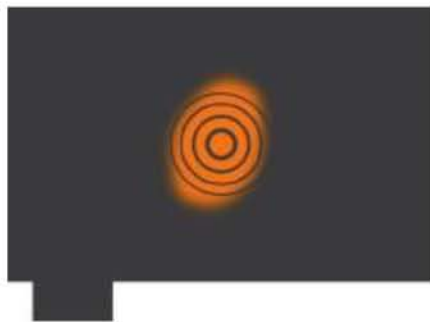
STEP 5

The following will appear in the users **Login Items**, now **save** and **exit**.
Now Re-boot and the single touch driver will start on user's logon



Stage 2

Set up single touch driver for touchfoil



Set up single touch driver for the
touchscreen, page 16

Installation tips, page 21



Set up

Single Touch Driver

STEP 1

Language Selection

If you selected automatic start up on installation you will be presented with a drop down menu, to select the language of single touch driver, if not then click on the **touchscreen driver-MA9** desktop shortcut to start the driver



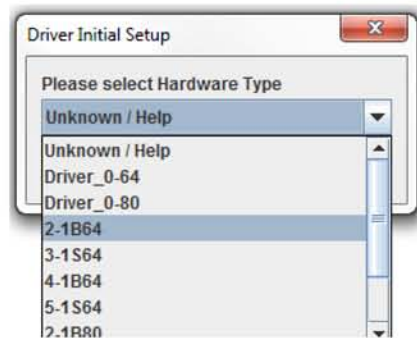
It is possible to customise for additional languages, please contact your supplier for details

STEP 2

Driver Selection

Select the correct driver from the drop down menu

If you accidentally select the incorrect driver click the **factory reset button** (systems tab) and restart the setup process



It is vital at this point to select the correct driver for your touchscreen

Correct driver located on the tail of the touchscreen

42 -16x9-



STEP 3

Single touch driver user interface

Windows/Linux



MacOS X

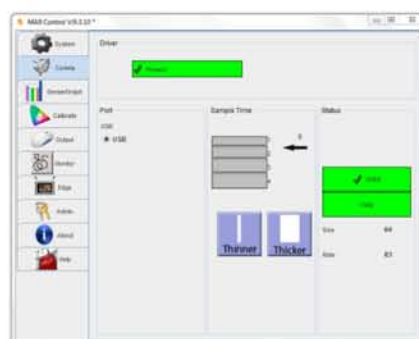


STEP 4

Communications

Check the touchfoil™ is communicating, click on comms tab

Check driver present, **open** and **valid** boxes are green



STEP 5

Calibrate

Click on **calibrate** tab

Click with the mouse the **Calibrate** box to begin calibration process

Touch each **target** in turn, with your finger, as they appear

If the system will not calibrate go to step 8 and adjust the sensitivity of the touchscreen



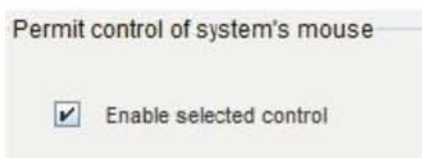
STEP 6

Touch control

Click on the **output** tab

Select the touch control you require

Click on **enable selected control** tick box to enable touch control otherwise your **touchscreen** will not register a touch



STEP 7

Close Driver and **Save** configuration as instructed



The following steps 8 and 9 are only required if the touchfoil™ is too sensitive or not responding or the thickness of your material is above 12mm

STEP 8

Sense/Graph Tab

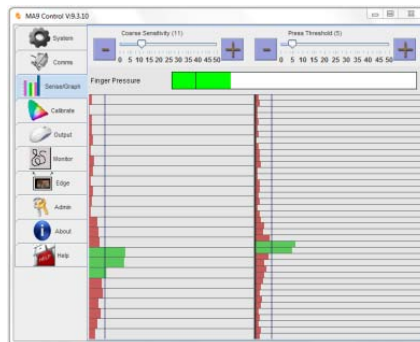
Adjust sensitivity and finger pressure levels in small increments only

Used to set up touch sensitivity and monitor wire indicator movement

Our default setting will allow you to work through 4-12mm of material

If the touch is too sensitive or insensitive adjust in **SMALL** increments the sensitivity and finger pressure controls to achieve the required result

A touch is achieved when the green bar exceeds the finger pressure bar indicator (black line)



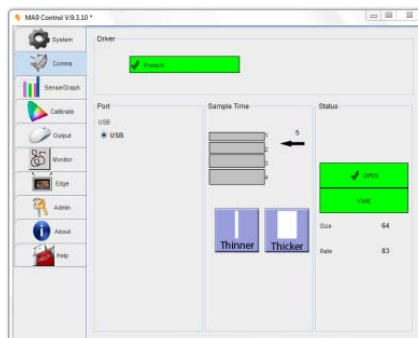
STEP 9

Comms Tab

Displays driver status

Allows adjustment of sample time if required, which sets the driver for different thicknesses of material

The default sample time of 5 = 4-12mm of material, 10 = 12-15mm, 15 = 15-25mm



It is important to leave the default sample time setting of 5 unless your material is thicker than 12mm

INSTALLATION TIPS

When installing the **touchscreen** with an LCD display an air gap is required between the back of the **touchscreen** and the LCD display. The distance of the air gap is dependent on the size of the LCD display. For example, a 40" **touchscreen** requires a 4-6mm gap and a 55" **touchscreen** requires a 6-10mm gap

The earth lead on the USB cable must be connected to a clean metal point on the LCD metal casing. This will reduce the interference that is caused by the LCD unit

Route the **touchscreen** USB cable away from all mains, VGA and power supply cables

Only move the sensitivity/press threshold levels in small increments if the touchfoil™ is either too sensitive or non-responsive to your touch

During the driver install process a **short cut** of the single touch driver is placed in the **start-up** folder, this enables the single touch driver to automatically start on system boot up.

If you do not require the driver to auto start, remove the driver **short cut** from the start up folder

TROUBLESHOOTING

Unable to calibrate

Check you have installed the correct driver **touchscreen** not sensitive enough. Try using two fingers to touch the targets or slightly increase the sensitivity, once calibrated review sensitivity settings

Graph moving but not responding to a touch

Make sure you have connected the controller board the correct way around

Increase sensitivity, or reduce press threshold level or both

Random touches

touchscreen too sensitive - reduce sensitivity level

External interference – remove external interference if possible,
Connect USB earth cable to a clean earth point

Check there are no other instances of any other touch drivers running