

DSX1000 and DSX2000 Content Manager 3.0

Quick Start Guide

DSX1000 / DSX2000 Web CM3.0 Quick Start Guide

Thank you for evaluating this fully integrated hardware and software solution which enables the delivery of compelling digital content throughout the enterprise network in a timely fashion. Version 3.0 provides the multi-zone layout feature, providing up to eight zones to play various media files on one display. In addition to templates, users can also customize their own templates for efficient and targeted deployment.

Before going through with the DSX1000 or DSX2000 evaluation, please make sure that you follow the requirements below:

Required equipments:

- (1) Internet connection***
- (2) DSX1000 and/or DSX2000 appliance***
- (3) 17" or above LCD monitor (preferably wide screen to show 16 x 9 aspect ratio presentation)***
- (4) PC or Laptop to connect to Content Manager Server on the web through Internet Explorer***

In certain instances you might have also received the following information from your reseller or DT Research Account Representative (an online evaluation program is only offered in certain countries):

- (1) UserID***
- (2) Password***
- (3) Organization***

The DSX1000 product packaging contains the following:

- (1) 1 x DSX1000 player appliance***
- (2) 1 x DVI to VGA connector***
- (3) 1 x Power adapter***

The DSX2000 product packaging contains the following:

- (1) 1 x DSX2000 player appliance***
- (2) 1 x Power adapter***

Connecting your DSX1000 Signage Appliance

The DSX1000 comes with built in DVI connectors for most regular LCD monitors in the market today. If your LCD monitor only has a VGA connector then please use the included DVI to VGA connector as shown below.



Connecting your DSX2000 Signage Appliance

DSX1000 / DSX2000 Web Content Manager 3.0 Quick Start Guide

The DSX2000 comes with built in VGA as well as HDMI output. Connect the appropriate output to the LCD monitor.

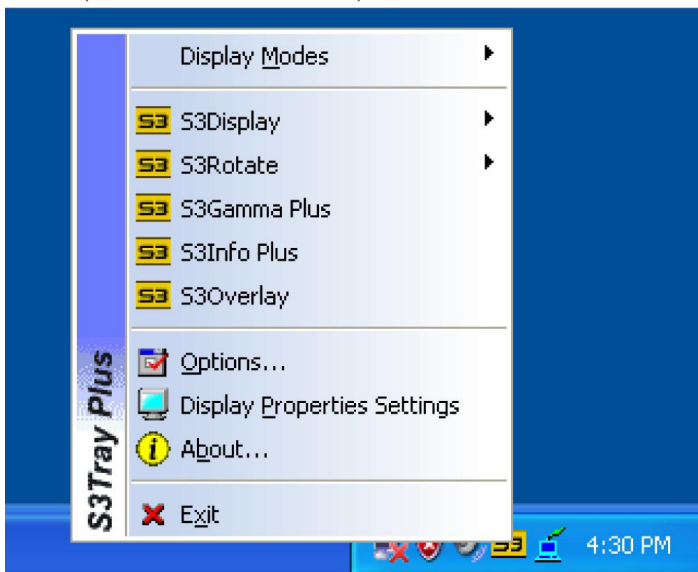
Proceed to hook up a USB mouse and Keyboard to the unit (There are a total of 4 USB ports on the DSX1000 and 2 USB ports on the DSX2000). Then hook up your RJ-45 Internet Cable to the SA unit and finally hook up the Power Supply Adapter to the unit last. (Picture shown next page shows you an example)



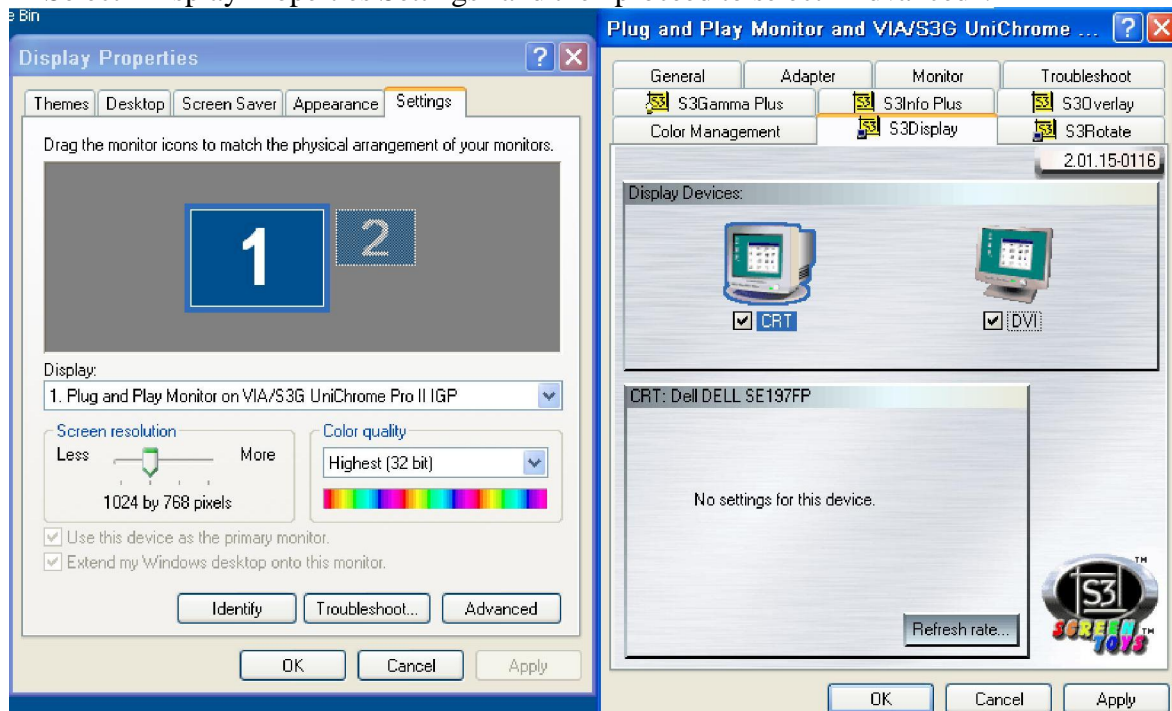
*****Note** this section is only applicable if you have an DSX1000 unit***

If you have previously connected an LCD monitor through the VGA port and then later on decide to utilize the DVI port, please follow the steps below in order to enable the DVI port on the DSX1000 again.

1. First connect the DSX1000 back to the original VGA LCD monitor and proceed to press Control+Shift+Space to exit the software screen.
2. Move your mouse to the bottom right corner of the screen and right click on the S3TrayPlus Utility Icon. (Picture shown below).



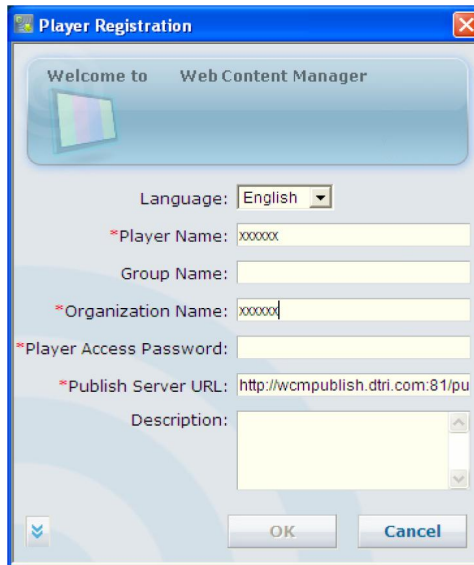
3. Select “Display Properties Settings” and then proceed to select “Advanced”.



4. Proceed to click on “S3Display” and check the “DVI” box and then hit “Apply” followed by clicking on “OK” when presented with a window.
5. Next click on the “Monitor” tab and proceed to uncheck “Hide modes that this monitor cannot display” and keep the Screen refresh rate at 60 Hertz. Hit apply and press “Ok” to accept the setting.



Now proceed to boot up the SA unit. You will see the following Player Registration screen when the system is booted up properly.



Click cancel to exit the player registration screen for now in order for us to setup the Date/Time for the unit.

Setting the Date/Time and Time Zone for the unit

1. Next, set the Date/Time for the system by moving your mouse to the time section (bottom right corner), right click on it and select “Adjust Date/Time”.
2. Select the “Time Zone” tab and choose a time zone that matches your location.
3. Select the “Date & Time” tab and proceed to set the unit to the correct date and time. Click on the “Internet Time” tab and then click on “Update Now” to sync the time of the unit to an Internet Time Server.

The SA player has been configured to automatically retrieve an IP address from your local DHCP server. If you do not have an in house DHCP server you will need to configure a static IP address on the network adapter. Please check with your IT department on how to configure that or call DT Research. Please use the mouse to launch the program by following these steps: Start -> All Programs -> WCM Player -> Register Player Again

Please register with the following information (Again, note they are all case sensitive):

Player Name: Leave it at default or change it to a meaningful name

Group Name: You can leave this blank for now (*the group name will be created in Step 2 below*)

Organization Name: Same as “Organization” from The DTRI email you received

Password: 123456

Publish Server URL: <http://itechlcd.com/publish> (Follow the information provided to you via email)

If your company has a proxy server, please click on the down arrow key and proceed to punch in the correct proxy server address as well as the corresponding user name / password combination.

If the Player registration is successful, you will get the following status screen below, please note the “Player Name” because you will need this for the next step.

If you are having difficulty getting past the login screen, please read the “Failed to register” message presented to you and check whether you have entered the correct password and organization name. Remember, they are all case sensitive.

Also if the error message comes back saying “Cannot connect to the server” please make sure that the Publish Server URL is correct. Another thing to check is to make sure that:

1. The SA box is setup for auto IP configuration with a built in DHCP client. Make sure your internal network has a DHCP server setup properly.
2. If you are still having network difficulty, check with your local System Administrator for a valid Internal IP Address.

To exit the player software if you need to tweak the configuration, press **Ctrl+Shift+Space key.**

Login to the Web Content Manager Server in order to manage your digital content

To manage content for playing through the players, please access <http://signage.dtri.com/hosting> (This site is just an example. Please use the site that is specified in the email sent to you by a DT Research or its reseller representative.) **The Web Content Manager is only supported by Internet Explorer Version 6 or above.**

ASP Edition
Version: 3.0 (8C232)

Web Content Manager

Language: English
User ID: ateah
Password:
Organization: demo
Verification Code: 5422 (Please input the number in the picture)

Login Change Password

(A resolution of 1280 X 1024 or higher is recommended)

Please login as:

User ID: You received this from the DTRI email

Password: You received this from the DTRI email

Organization: You received this from the DTRI email

** Please note that the above information is all case sensitive.*

If you need more assistance, please access the online help (via the Help link in every page) for more details on how to operate the Web Content Manager. The Help content also contains a Workflow Demo in Flash.

To start off, please do the following:

a) Pick your player as the preview player for viewing medias and playlists

The screenshot shows the 'Web Content Manager' interface. On the left, the 'System' menu is expanded, and 'Account Management' is selected. In the 'Account' list, 'manager' is highlighted. The main form, 'Manager Account Information', contains fields for User ID, Password, Confirm Password, First Name, Last Name, Description, Email Address, Mobile Phone, Carrier, and Preview Player. The 'Preview Player' section, which includes a list of available players and an 'Add' button, is circled in orange.

- Click Account management on the left panel (Under System)
- Under Account, double click on “Manager” and proceed to select your login name
- Click on “Add Preview Player” and pick a player from the Preview Player window

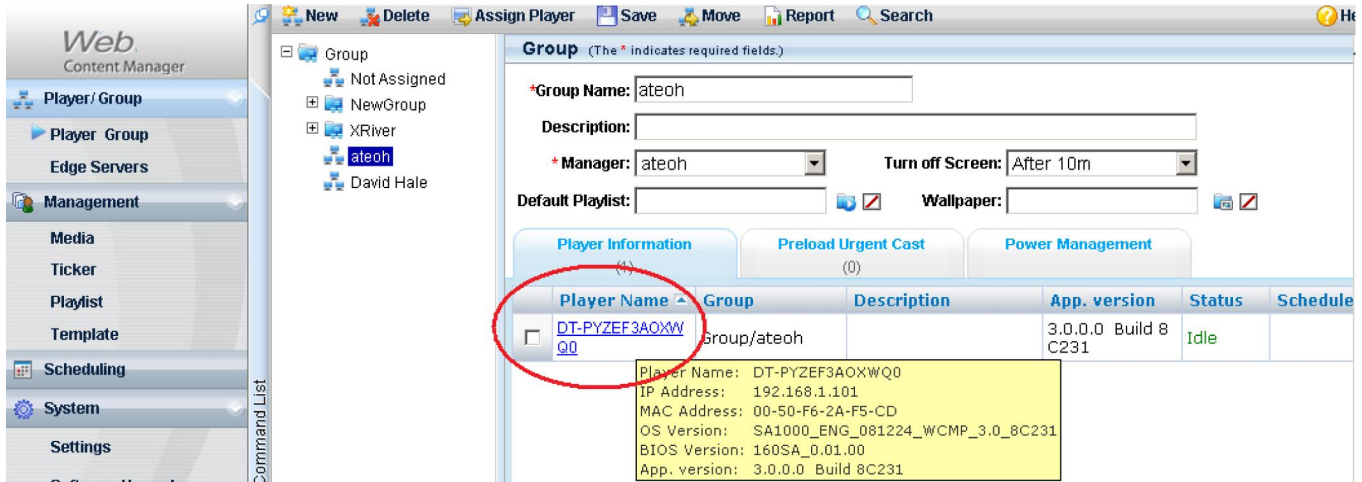
b) Create a player group and assign a player to the group

The screenshot shows the 'Web Content Manager' interface. On the left, the 'Player/Group' menu is expanded, and 'NewGroup' is selected. The 'New Group' dialog box is open, showing fields for Group Name, Description, and Manager. The 'Group' list on the left has 'NewGroup' selected. The 'New Group' dialog box is open, showing fields for Group Name, Description, and Manager.

Click Player/Group on the left panel

DSX1000 / DSX2000 Web Content Manager 3.0 Quick Start Guide

- Click “New Group” (top menu) and enter the “Group Name” then click “OK”
- Now, click on the group that you just created
- Click “Assign Player” (top menu)
- Add a Player from the “Not Assigned” to the group
- Now click on the new group you have created and then click on your player (picture below)



- You can then select the time zone for this player (if you had not done the configuration previously)
- Also click on “Synchronization Time” button below to sync up the time to the server.

Player Information

*Player Name: DT-PYZEF3AOXWQ0 Snapshot: 2009-01-09 09:59:39

Description:

Status: **Idle**

Current Edge Server: None

Preferred Edge Server: -any-

Machine Name: DT-PYZEF3AOXWQ0

IP Address: 192.168.1.101

MAC Address: 00-50-F6-2A-F5-CD

OS Version Information: SA1000_ENG_081224_WCMP_3.0_8C231

BIOS Version: 160SA_0.01.00

App. version: 3.0.0.0 Build 8C231

Patch Name: None

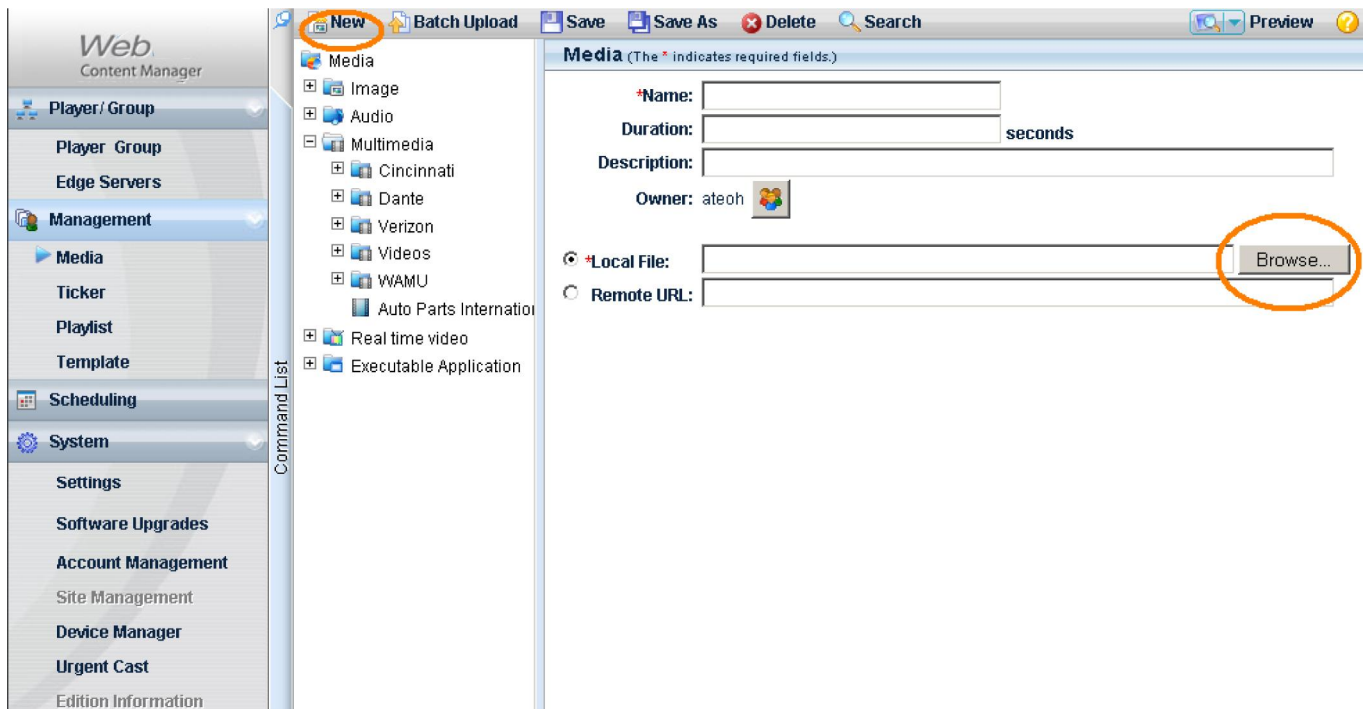
Patch Status: None

Free Space: 987 MB

Time Zone: (GMT-08:00) Pacific Time (US & Canada)

Player Time: 2009-01-09 10:03:08

c) Upload your media



- Click “Management” on the left menu and then select “Media” on the left panel
- Click “New” in order to upload one media file at a time
 - You can ignore the “Name” text field as it will be automatically populated with the name of the file you upload
 - Click “Browse” and select a media file to be uploaded (a few accepted formats are avi, .mov, ppt, .swf (flash), jpg, .gif, etc) **Please do not change the extension of the file name. The name can be changed however the extension must remain the same.**
 - If the media file is in fact a remote HTML site then select “Remote URL” and type in the URL to that website. For instance <http://www.yahoo.com> ○ If you contents consist of an html file with multiple sub reference files (eg. Gif, jpg, swf) or a main flash (.swf) file that references multiple movie (.mov or others) files then zip up the whole folder into a .zip file before uploading it to the server.
- It’s also important that you load the correct media to the correct folder. For instance static images should be loaded under /Media/Image while everything else including PowerPoint, Flash, Web URLs should be loaded under the /Media/Multimedia section.
- Click “Batch Upload” if you have quite a few files to upload
- If you want to preview any media on the Player Software, highlight the media and then click on “Preview” on the top right corner
- Watch as your media is being displayed on the LCD with the Web Player.

Media Content Management

In the **Media** sub-section, there are three pre-defined media folders- Image, Audio, Multimedia, Real time video and Executable application. In each folder, you can create sub-folders to save uploaded media files. Web Content Manager supports the following media types and formats.

- Image

- o JPEG (.jpg, jpeg)
- o BMP (.bmp)
- o PNG (.png)
- o TIFF (.tif, tiff)
- o GIF (.gif) - less than 2048 X 2048 pixels
- o TGA (.tga)
- o PCX (.pcx)
- Audio
 - o MP3 (.mp3)
 - o MP2 (.mp2)
 - o Wave Audio (.wav)
 - o Window Media Audio (.wma)
 - o MIDI (.midi, .mid)
 - o RealNetworks Real Audio (.rmi)
 - o Audio Interchange File Format (.aif)
 - o AU (.au)
 - o SND (.snd)
- Multimedia (All movie files must be de-interlaced, eg. avi, mpg, mp4, mov)
 - o Adobe/Macromedia Flash (.swf) up to version 8. Flash player needs to be updated manually for later versions.
 - o MP4 (.mp4)
 - o MMS (mms://) **(This is a good way to stream live video into the players)**
 - o RTSP (rtsp://)
 - o Flash Video (.flv)
 - o Microsoft PowerPoint (.ppt, .pps, .pptx, .ppsx)
 - o MPEG1/2 (mpe, mpg, mpeg) **(This is the best format to use for the DSX1000/DS1500/DS1700)**
 - o Window Media Video (.wmv, .asf, asx)
 - o AVI (.avi)
 - o DVD Video (.vob) (non protected)
 - o Apple QuickTime (.mov)
 - o HTML (<http://> .html, .htm or data driven websites such as jsp, .asp, .aspx)
- Real Time Video
 - o Supports video input in either S-Video or RCA Video (either in NTSC or PAL format) **(on the DSX2000 only)**
- Executable Application
 - o You can pre-install any executable application (in Java, .NET, EXE) onto the SA device and then launch the application later on within a zone on the screen. Web Content Manager Server 3.0 supports one single executable application zone per template.

An image or multimedia file will be scaled to full screen size when played, except the PowerPoint files. Follow the steps below:

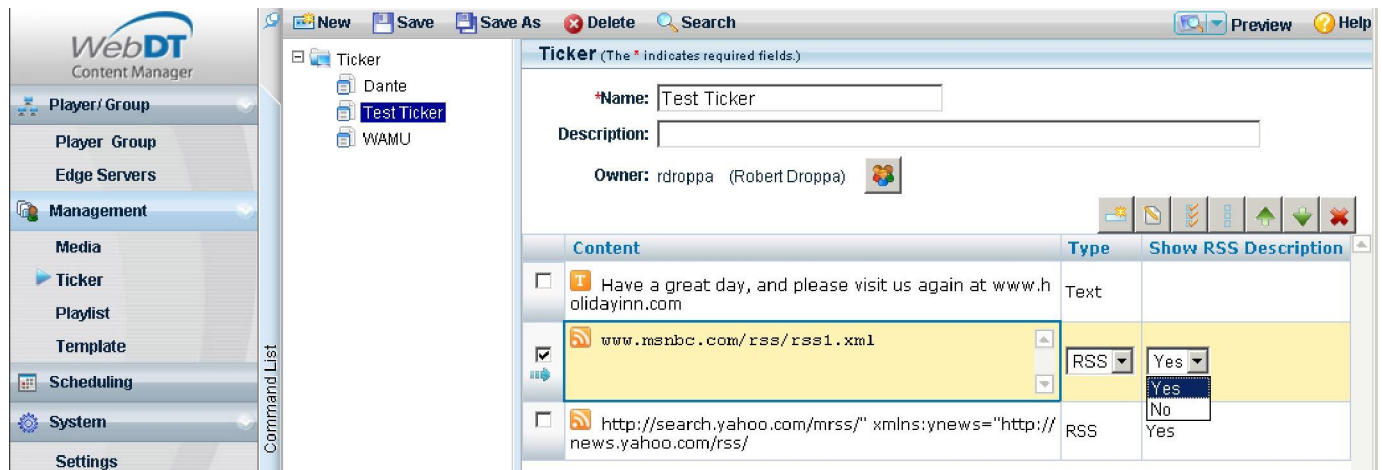
1. Open the PowerPoint file with Microsoft PowerPoint application.
2. Select File/Page Setup menu option.
3. Adjust the width/ height of the slide to match the resolution of the display of the player.

4. Click **OK** and save the file.

**Some media files may have small variances compared to standard files.
We strongly recommend you preview the content before publishing it
to ensure the media plays correctly on the player.**

Note

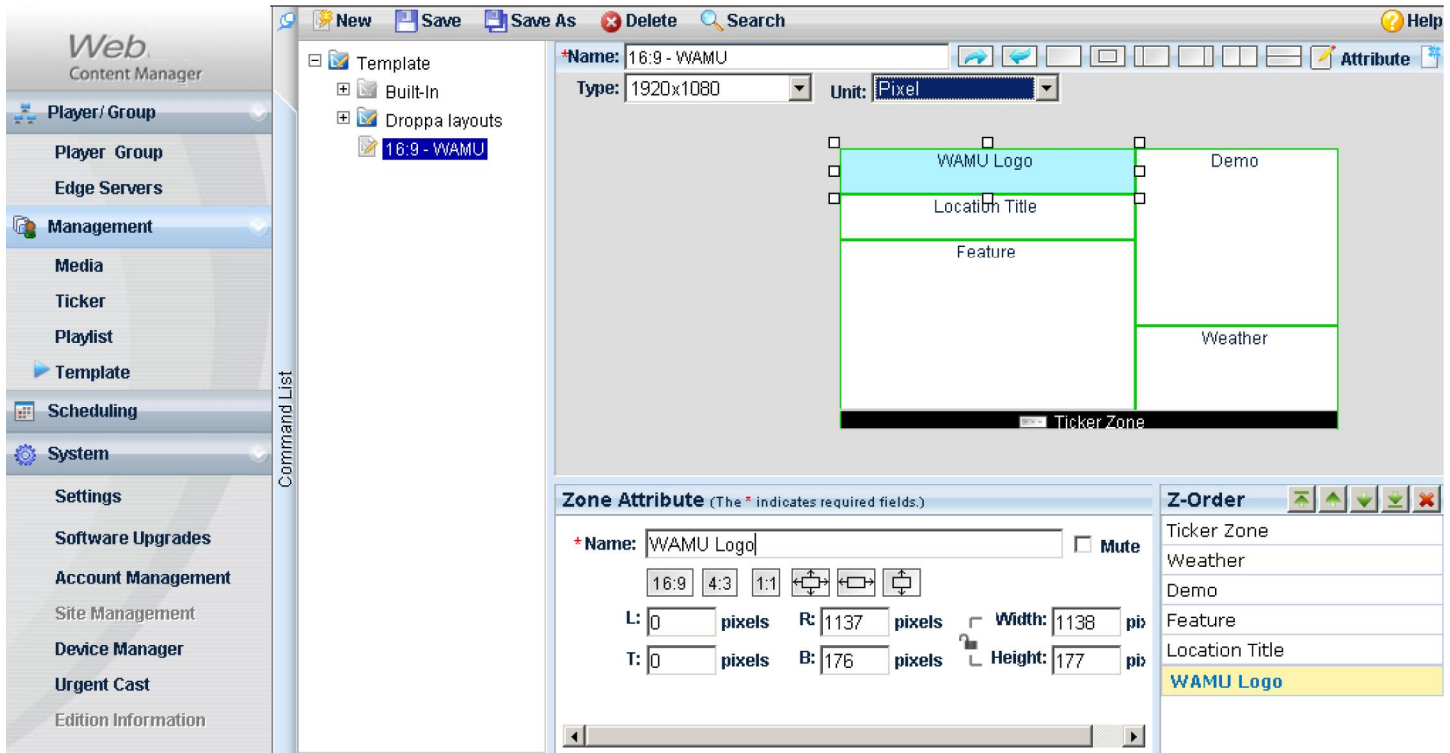
d) Create a ticker (optional)



- Click “Management” -> “Ticker”
- Click “New” -> “New Ticker”
- You can enter some “Static Text” and/or RSS feed from a live Internet RSS site (sample http://rss.cnn.com/rss/cnn_topstories.rss). If you have multiple feeds, they will be processed sequentially.

e) Experimenting with multi zones layout with selected templates (optional)

DSX1000 / DSX2000 Web Content Manager 3.0 Quick Start Guide



Click “Management” -> “Template” on the left panel

Expand “Template” -> “Build-in” and pick a Predefined template

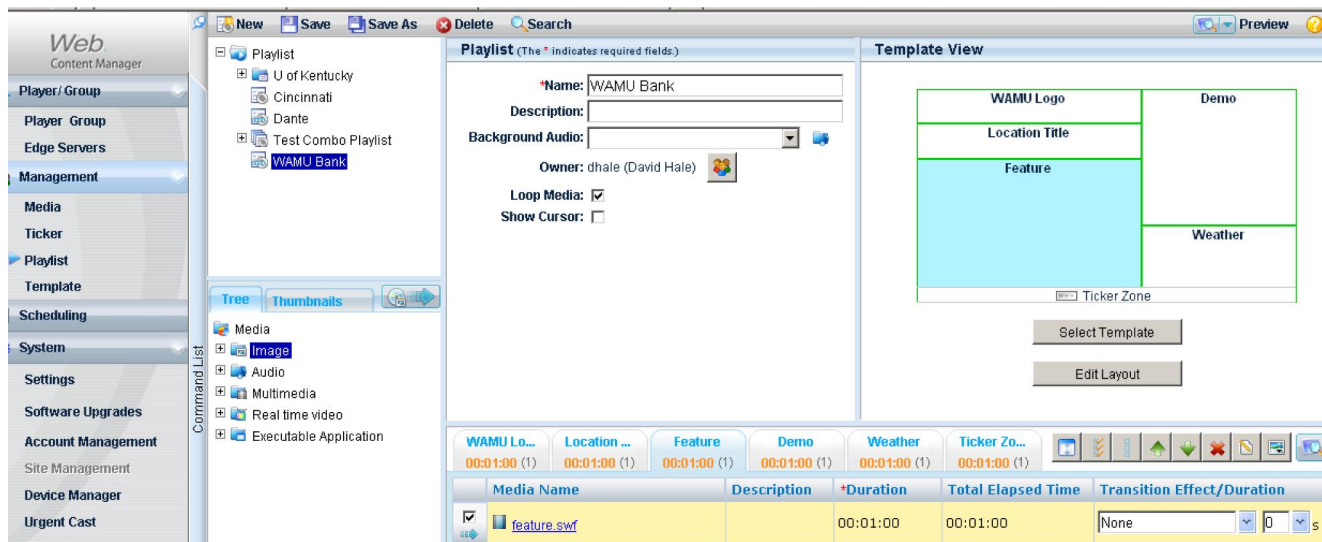
Alternatively you can also click on “New” to create/design a new template of your choice.

- Make sure you select the correct screen type (1920x1080 or 1366x768 or other screen size).
- You can create up to 8 zones on the screen plus one ticker zone. The Z-Order handles the overlapping of zones from top to bottom
- The ticker zone can be positioned anywhere on the screen and it has a different set of attributes such as ticker font size, direction of scrolling, speed, etc.

If you need more information, please click Help at any time.

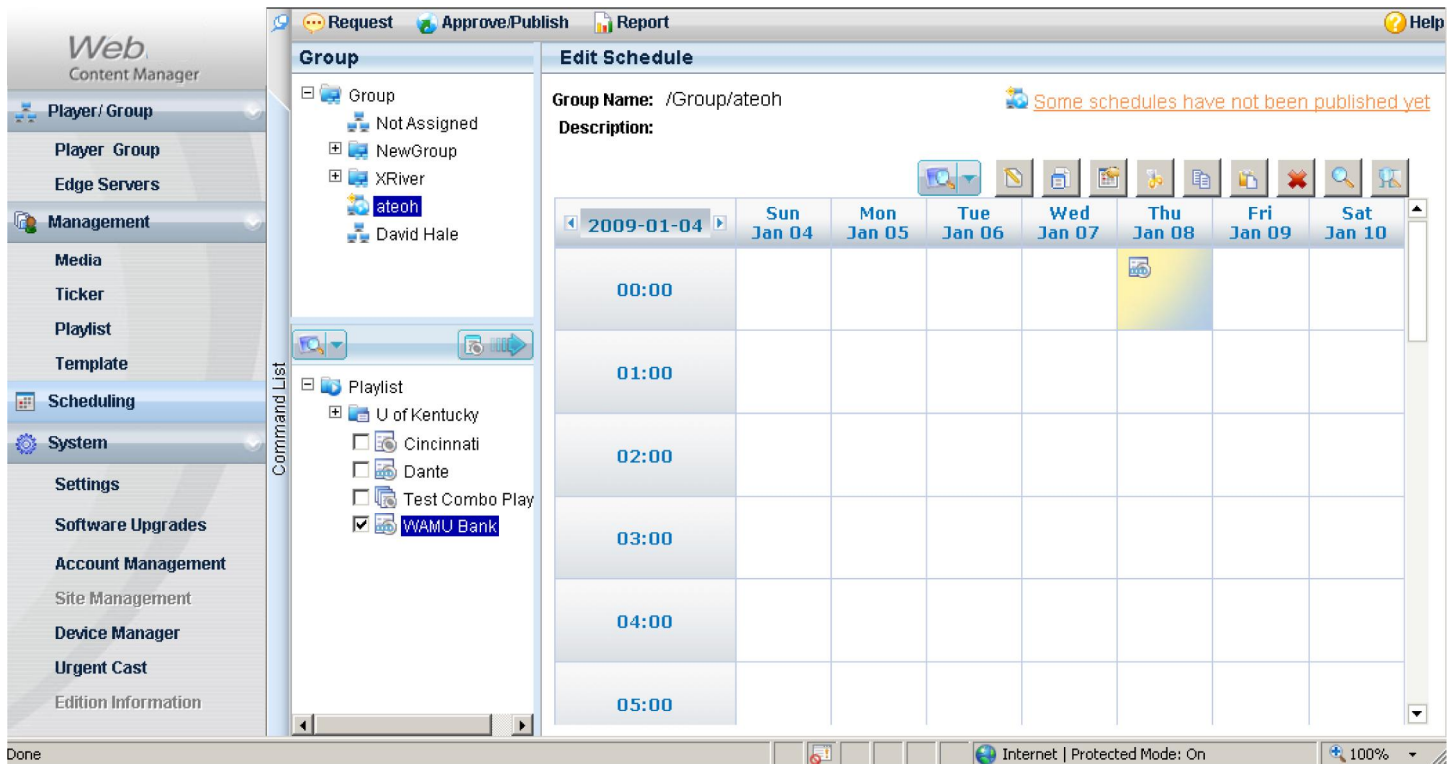
f) Experimenting with a playlist

DSX1000 / DSX2000 Web Content Manager 3.0 Quick Start Guide



- Click “Management” -> “Playlist” on the left panel
- Click “New” -> “New Playlist”
- If you would like to have a multi zone display, select a template
- Enter a name for the Playlist
- Select a zone under the “Template View” then click “Media” to add a media file to the highlighted zone (remember you can click on each zone and upload a separate media file to each)
- Finally, click “Preview” to view the playlist on your PC
- If you enabled the “Show Cursor” button, you will then see the mouse cursor on your LCD monitor.


g) Schedule the playlist and publish it




Click “Scheduling” on the left panel

Click on your “Group”

Click on a date and time you would like to start

Pick a playlist or multiple playlists and click the  to add the playlist

Click on the  icon to enter “start” - “end date time” and “recurrence”, then save it and close the window

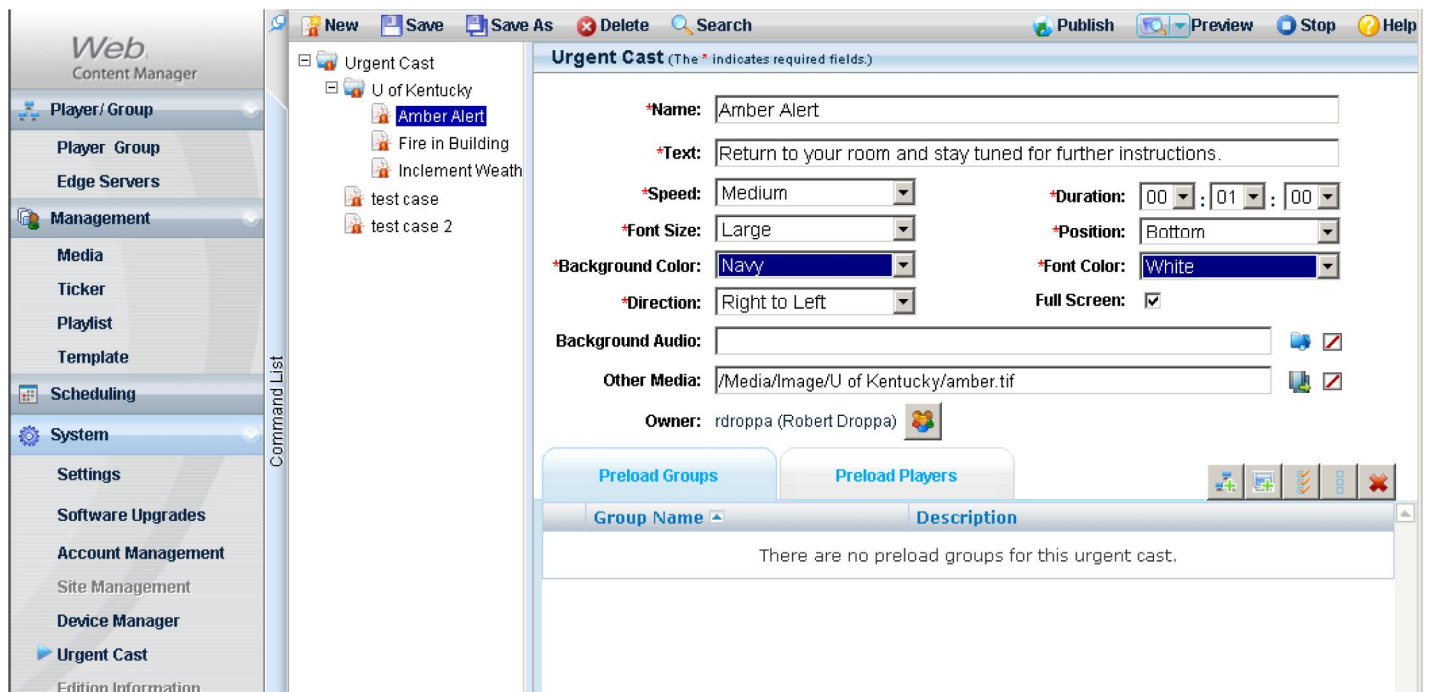
Finally click on “Approve/Publish” to publish the playlist at the selected date/time

When we reached the scheduled date/time, the player will start downloading and play the content automatically. The download may take a while depending on your uploaded media size and playlist.

h) Experimenting with Urgent Cast

Urgent Cast is a unique feature built in to the Web Content Manager that allows administrators of the Web Systems to broadcast urgent messages throughout all or selected panels at the same time.

You can access the Urgent Cast feature by clicking on the Urgent Cast link under the Systems menu.

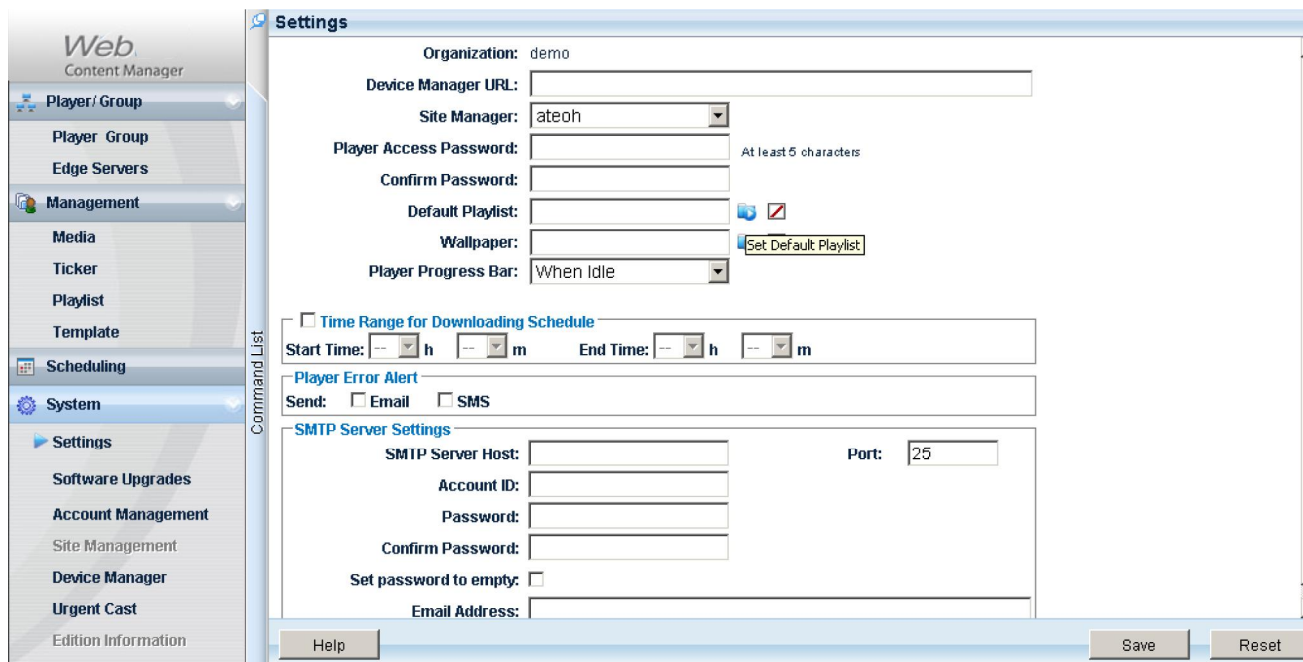


- Type your urgent message under the “Text” field. You can also cut and paste onto that section.
- Type in duration in seconds.
- You can also change the speed, position, font and background color at this point if you wish.
- Select a background audio or select some multimedia content at this point if you wish.
- Click on preview to have this displayed on your pre selected media player. Once you are satisfied with the result, click on “Publish” to make this urgent broadcast message effective immediately.
- Once you have clicked on “Publish”, you would need to select the group of players who which you would like to send this urgent cast message to.
- On this screen, you can also click on “Preload Groups” and select group(s) of players which you would like to preload the urgent cast message onto. That way, during an emergency situation, important contents would have been uploaded in advance to each Web Signage Player and playback would be almost instantaneous.

Administrative Settings

There are a couple of settings that you could tweak as the administrator for this organization (See screenshot on the next page).

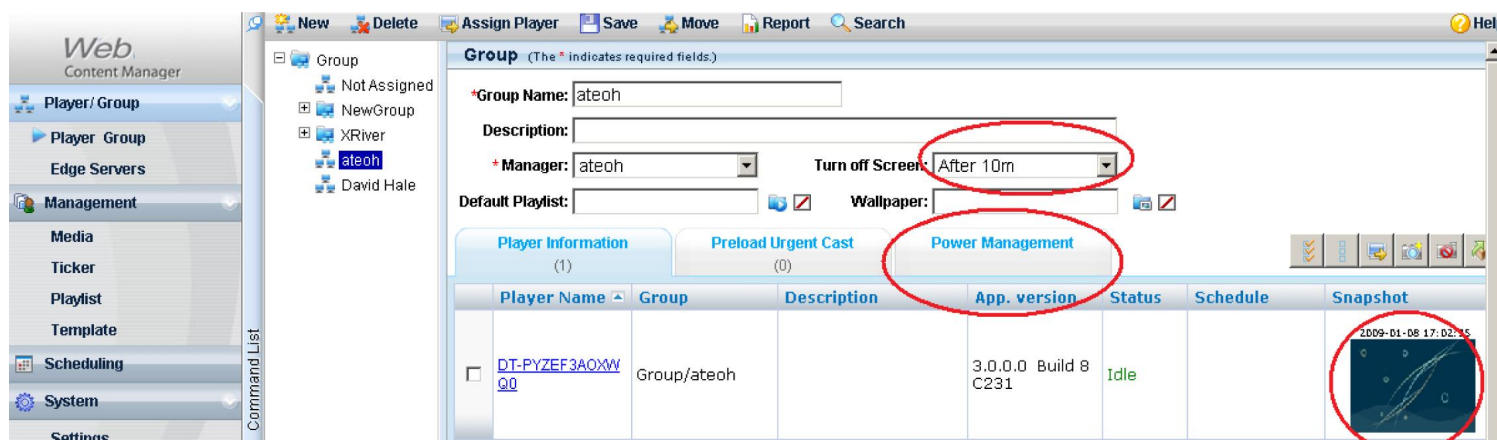
- Default Playlist: This is a great tool to utilize as your default attract loop whenever there is no content being scheduled/played.
- Wallpaper: This overwrites the default “Web bubble/waverly screen” with whatever wallpaper you desire to see for all players within the control of this organization,
- Time Range For Downloading Schedule: The server would only upload scheduled content to each Web Player within the scheduled time range.
- Also set the Player Error Alert by checking on the “Email” box.
- Fill the necessary SMTP Server Settings such as the SMTP Server Host, Account ID, Password and Email Address. If you are not sure which SMTP server to use please check with your local System Administrator.



Player/Group Management

Within the Player Group setup, you can do a number of administrative tasks such as:

- By clicking on a group, you can set the “Default Playlist” and “Wallpaper” which overwrites the global settings.
- You can also set the system to “Turn off Screen” after a certain amount of idle time to preserve the LCD screen.
- By clicking on each player, you will bring up another window which gives you more detailed information regarding this Web Player. From within, you could then change the time zone, synchronize the Player time with the Server time, refresh the snapshot of the Player, check the “Schedule Status” of the Player, etc.



Power Management

Version 3.0 allows you to remotely schedule player shutdown and startup time. Click on the “Power Management” tab (See screen above) and then set the schedule that would affect all players within the group which you have selected. Please note that you can only schedule Power Management when the SA players are still powered up.

NewGroup

XRiver

ateoh

David Hale

*Group Name:

Description:

* Manager: Turn off Screen:

Default Playlist: Wallpaper:

Player Information
(1)

Preload Urgent Cast
(0)

Power Management

power on or wake on LAN(wired). Otherwise, the player can not work nor be controlled by server.

	Startup Time	Shutdown Time
<input type="checkbox"/> Sunday	None	None
<input type="checkbox"/> Monday	None	None
<input checked="" type="checkbox"/> Tuesday	08:00	20:00
<input checked="" type="checkbox"/> Wednesday	08:00	20:00
<input type="checkbox"/> Thursday	None	None
<input type="checkbox"/> Friday	None	None
<input type="checkbox"/> Saturday	None	None

Startup At: h m

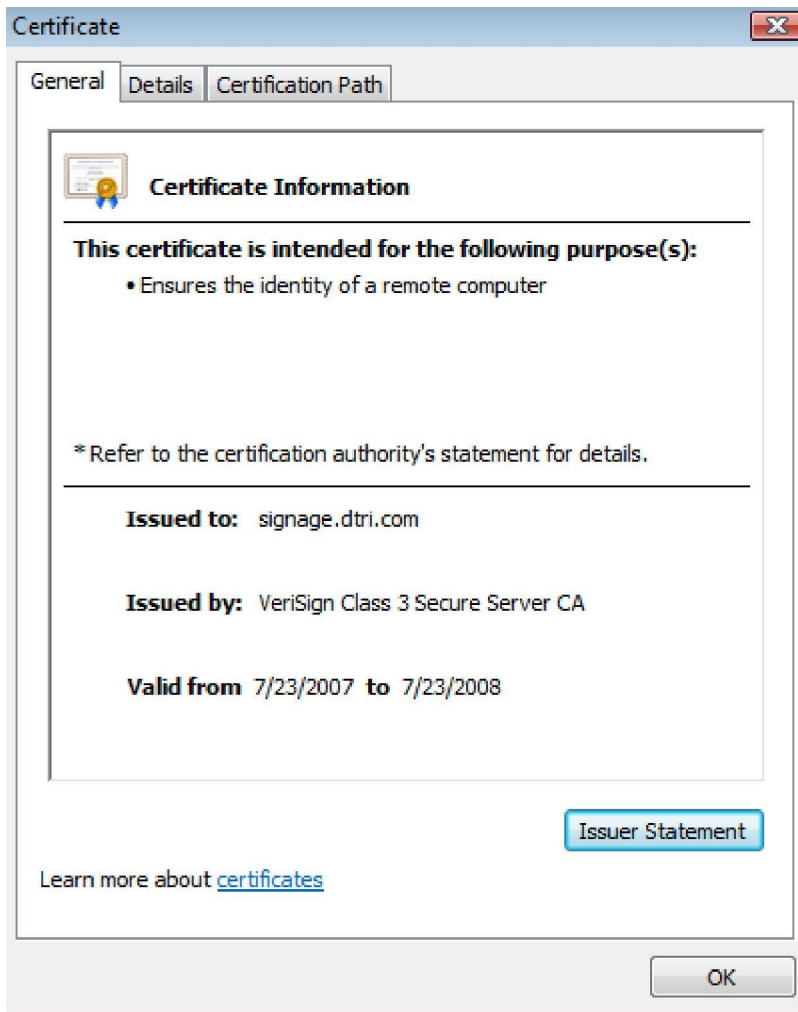
Shutdown At: h m

Apply

Clear

Security and Network Consideration

The Web Content Manager software hosted through DT Research currently utilizes the VeriSign Class 3 Secure server SSL Certificate, as such your login authentication information is securely transmitted over the Internet to a server hosted by DT Research.



Picture shows the VeriSign Class 3 Secure Certificate

Public and Private Keys to Privacy

An SSL Certificate consists of a public key and a private key. The public key is used to encrypt information and the private key is used to decipher it. When a Web browser points to a secured domain, a Secure Sockets Layer handshake authenticates the server (Web site) and the client (Web browser). An encryption method is established with a unique session key. They can begin a secure session that guarantees message privacy and message integrity.

Contact iTECH Technical Support

Customer Service / General Product Information / Sales & Marketing:

Email: info@itechlcd.com

Technical Support / Product feedback / General Help:

Web: <http://www.itechlcd.com>