

Ruggedized IP65

6.5" HMI Panel PC

Model: WPMPC0650-I93SHM

Product Features:

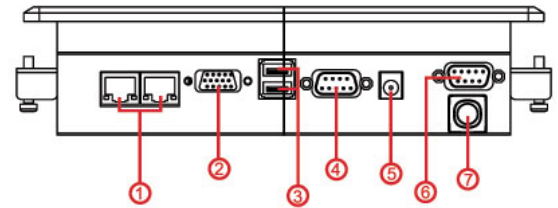
- 6.5" TFT LCD with resistive touch screen
- Embedded intel® Atom Z510P/Z530P 1.1GHz/1.6GHz processor
- Support Dual Gigabit Ethernet
- Fanless and Ultra-low power consumption

Specifications:

Display	Model Name	WPMPC0650-I93SHM
	Size/Type	6.5" TFT/LED Backlight
	Resolution (pixels)	640x 480
	Number of Colors	16.2M
	Brightness (cd/m2)	700
	Contrast Ratio	600:1
	Viewing Angle	-80~80 (V) ; -70~70 (H)
System	Processor	Intel® Atom Z510P/Z530P 1.1GHz/1.6GHz
	Chipset	Intel® US15W XL
	Memory	1 x SO-DIMM 512MB DDR2 400/533 (max 2GB)
	IDE/SATA	1 x 44pin IDE (UDMA33/66/100)
	LAN	Dual Realtek RTL8111B Gigabit LAN Controller
	Storage	1 x Mini PCI-E SSD
Input / Output	USB Port	2 x USB
	Ethernet	2 x RJ45-10/100/1000
	VGA	1 x VGA (female)
	RS-232	1 x RS-232 COM Port
	RS-422/485	1 x RS-232/422 / 485 COM Port (Default RS-485)
	DC-Input	1 x 2.5 DC Jack
Power	Power Input	12V DC-IN
	Power consumption	15W (typ.) (Max.backlight & high CPU load)
Environment	Operating Temperature	0 deg.C to 50 deg.C
	Humidity	30% to 90% (non condensing)
Driver OS Support	Windows XP embedded / Win 7 Pro Embedded / Win 7 WS7E / Windows XPP Embedded / Linux / Win CE 6.0 Core Runtime	
Accessories	External Adapter 110~230V Ac-in Power Adapter	
Default	Mechanical	Panel Mount (6mm bezel)
	Touch	4 Wires Resistive
	CPU	Z510P 1.1GHz
	Storage	1 x Mini PCI-E SSD 4GB
	RAM	1 x SO-DIMM DDR2 400/533 512MB



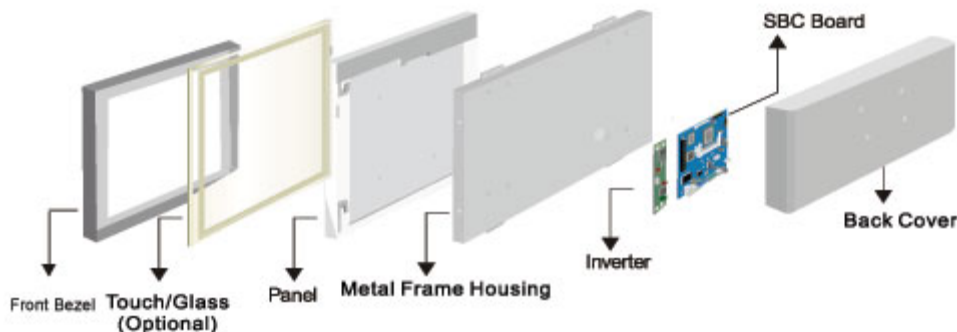
I / O View:



1. RJ-45
2. VGA Out
3. USB
4. RS-232

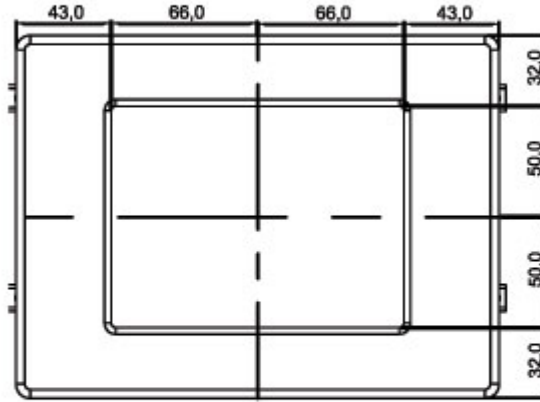
5. 12V DC-in
6. RS-485 (Default)
7. Power Button

Mechanical Design:

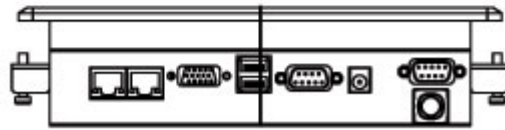
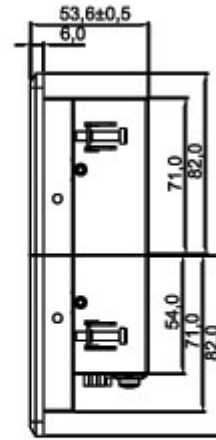


Dimensions:

Front View

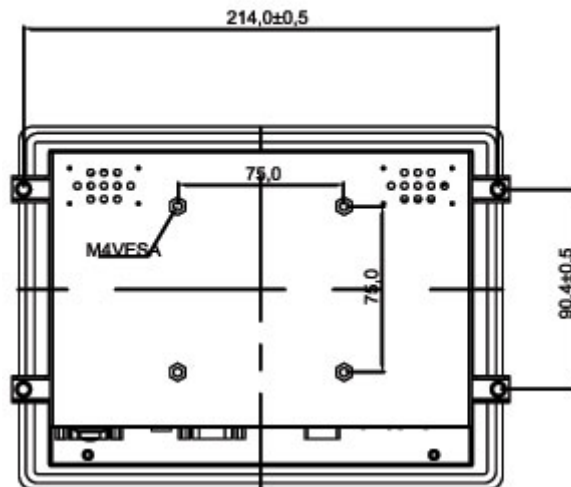


Side View



Bottom View

Back View



* Total dimension: L x H x D=218 x 164 x 53.6mm
Cutout dimension: 192 x 144mm

Note: this is a simplified drawing and some components are not marked in detail.

*Please contact our sales representative if you need further product information