

Ultra High Resolution Video Wall Controller for Large-Screen Information Display Billboard with scaling capability allows the input content scale to the full screen.

Easy Hardware Portrait
Flexible 4x1 / 3x1 / 1x4 / 1x3 Display Modes



Model: V1400P

1 Dual-link DVI Input to 4 DVI Outputs (4x1 & 1x4)
Support Up to 4096 x 768 / 1360 x 3072 High-Resolution Input



Support easy hardware portrait function & flexible output selection
(V1400P)

The V1400P is a high-resolution video wall controller, allowing flexible output selection and portrait/landscape display modes. No special software required, the V1400P supports hardware portrait function, bringing quick installation advantage for portrait applications. With powerful display modes and easy rotation by a graphic card, the V1400P is perfectly used as an image/information display billboard in airport, movie theater and department store.



Easy-To-Install
(Advantage)

Just a Dual-link DVI cable connects the computer to the V1400P. No extra software and setup is required, the V1400P automatically detects the correct settings. The V1400P is as simple as plug and play for flexible portrait and landscape display modes.

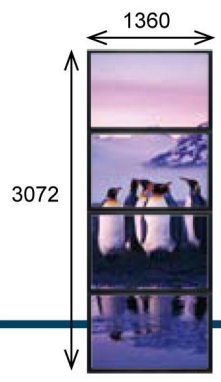
Traditional PC-Based Video Wall Solution



Large PC with expansion slots



Multiple graphic cards & complex software driver support



New-Generation V1400P Portrait Solution

Connect a PC to the V1400P with just a high-resolution Dual-link DVI connection, a portrait image is easily displayed

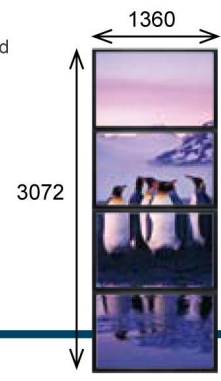


PC & 1 Dual-link DVI graphic card

Connect via only 1 Dual-link DVI



IEI embedded video wall controller





	Size	Power Consumption	Installation	Portrait Mode
New Generation V1400P Solution	Small • Embedded box design & wall mounting advantage	Low • Fanless	Quick • Connect PC via 1 Dual-link DVI cable	Easy • Hardware portrait by V1400P
Traditional PC-based Solution	Large • PC with multiple graphic cards	High • Graphic card processing consumes much power	Complicated • Special drivers & software support	Difficult • Need special software support

Video Wall (Controller/Splitter)

Flexible Graphic Card Compatibility

The V1400P requires a consumer grade graphic card with high-resolution dual-link DVI output. The graphics cards below meet these requirements. Please check the specifications of the card for your different rotation requirement.

nVidia GeForce Series		9800/9600/9500/9400/8600/8400
ATI Radeon HD series		4850/4830/4670/4650/3850/3650

Easy Graphic Card Set Up Process

STEP1 Connect Your Video Wall To The V1400P

~ According to the final image, set up the monitors in sequence

* Remark : The number is the DVI output port number on V1400P. The rotation function depends on the graphic card & its driver. The rotation function of nVIDIA graphic cards can't support all Portrait Modes & Landscape Modes with input resolution (either H or V) over 3840. The rotation function of ATI graphic cards can't support Landscape Modes with input resolution (either H or V) over 4080.

Landscape Set Up

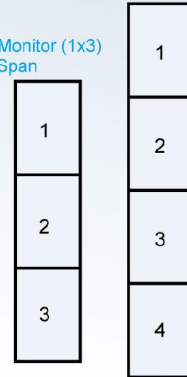
Landscape Monitor (3x1) / Horizontal Span



Landscape Monitor (4x1) / Horizontal Span



* Portrait Monitor (1x3) / Vertical Span



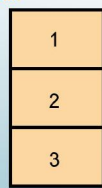
After 90° Clockwise Rotation



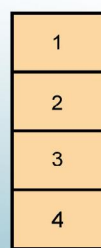
V1400P

Portrait Set Up

Landscape Monitor (1x3) / Vertical Span

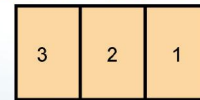


Landscape Monitor (1x4) / Vertical Span

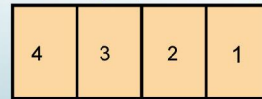


After 90° Clockwise Rotation

* Portrait Monitor (3x1) / Horizontal Span



* Portrait Monitor (4x1) / Horizontal Span



STEP2 Set Up Graphic Card- Resolution - According to the image input, set up the resolution

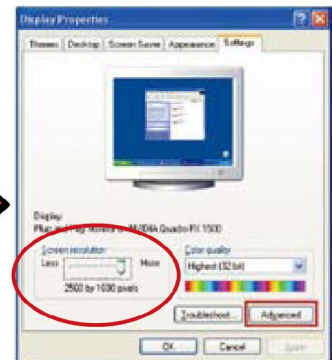
Important !!



Go to Windows Desktop for windows resolution setting and select "Advanced"



Select the " Monitor " Tab and make sure the check box of " Hide modes that this monitors cannot display " is unchecked



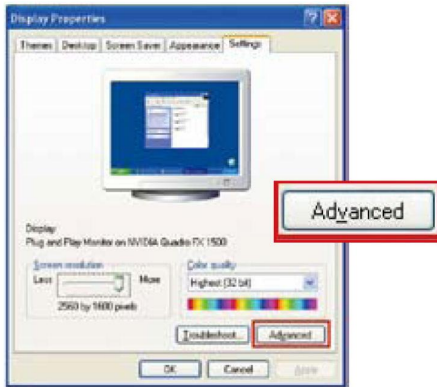
Go back to the resolution setting and there should be highest resolution support of each graphic card available in " Screen resolution "

STEP3

Set Up Graphic Card- Rotation

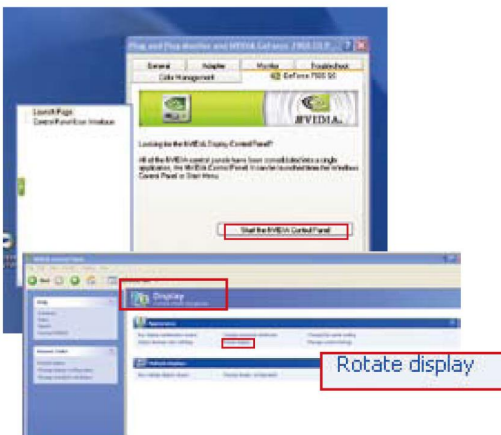
▼ **nVIDIA**

1.



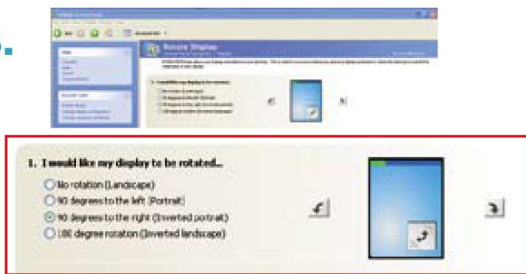
Click mouse right button or enter "Settings" and select "Advanced" to go to "nVIDIA Control Panel"

2.



Enter "Display" and select "Rotate Display"

3.



Choose "how to rotate" by video wall set up. If the rotation of video wall is 90° clockwise at step 1, rotate 90° counterclockwise(or 270°) for the windows desktop. If the rotation of video wall is 90° counterclockwise at step 1, rotate 90° clockwise for the windows desktop.

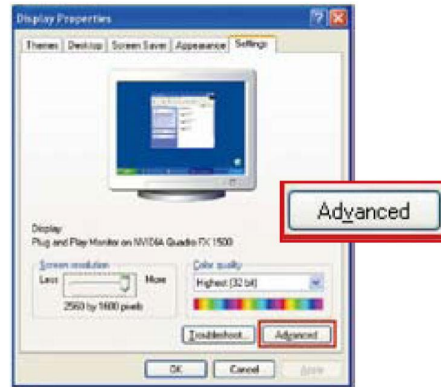
4.

View the Final Image



▼ **ATI**

1.



Click mouse right button or enter "Settings" and select "Advanced" to go to "ATI Catalyst Control Center"

2.



Enter "ATI Catalyst Control Center" and Select "Display Properties"

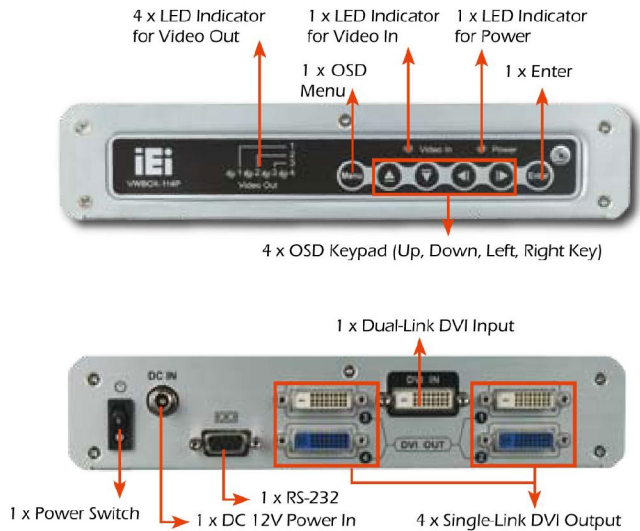
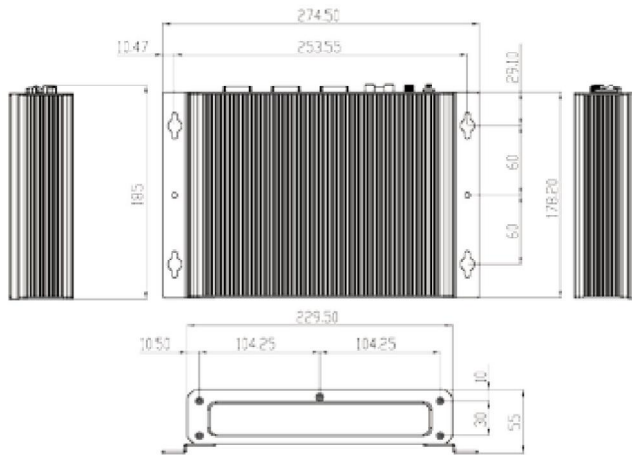
3.



(1) Setting Desktop number: DVI-1 or 2
(2) Choose the rotation(0° / 90° / 180° / 270°) by video wall set up. If the rotation of video wall is 90° clockwise at step 1, rotate 90° counterclockwise(or 270°) for the windows desktop. If the rotation of video wall is 90° counterclockwise at step 1, rotate 90° clockwise for the windows desktop.



■ Dimensions



■ Specifications

		V1400P			
Dimensions(mm)		230 x 180 x 47 (W x D x H)			
Cooling		Fanless			
Front Panel	LED Light	6 x LED (1x Input, 4x Output, 1x Power)			
	Keypad	6 Keys			
	IR Receiver	Yes			
Rear Panel	Input	1 x DVI dual-link Input			
	Output	4 x DVI single-link Output			
	Power Switch	1 x Power (in) with lock			
	RS-232	1 x RS-232			
Resolution	Input Resolution	Output Resolution	"Vertical Hz"	"Horizontal kHz"	
	Landscape mode (4x1)				
	3392x480	4 x 848x480	56	29	
	3200x600	4 x 800x600	61	38.4	
	3840x600	4 x 960x600	61	38.4	
	4092x768	4 x 1024x768	60	48.36	
	Landscape mode (3x1)				
	3072x768	3 x 1024x768	60	48.36	
	3840x800	3 x 1280x800	58	48.2	
	3840x1024	3 x 1280x1024	51	55.4	
	4080x768	3 x 1360x768	57	45.32	
	Portrait mode (1x4)				
	1024x3072	4 x 1024x768	60	48.36	
	1280x3200	4 x 1280x800	58	48.2	
	1280x4092	4 x 1280x1024	51	55.4	
	1360x3072	4 x 1360x768	57	45.32	
	Portrait mode (1x3)				
	1024x2304	3 x 1024x768	60	48.36	
	1280x2400	3 x 1280x800	58	48.2	
1280x3072	3 x 1280x1024	51	55.4		
1360x2304	3 x 1360x768	57	45.32		
Power Consumption		10W			
Power Supply	Connector	DC Power Jack			
	Input	90VAC to 264VAC/47Hz to 63Hz			
	Output	12V DC			
OSD Function		1. Output resolution selection 2. GeniMask bezel masking control 3. Power On/Off			
Temperature		0°C ~ 40°C			
Safety and Emission		CE, FCC, and CCC			

■ Packing List

Item	V1400P
Video Wall Box	1
12VDC Power Adapter (P/N:63000-UP0251E12PL59-RS)	1
Power Cord	1
IR Remote Control	1
Dual-link DVI-D Cable (1.8m)	1
Utility CD with User Manual	1
Mounting Bracket	1 set
Screw Kit	1 set

■ Options

Description
Dual-link DVI-D Cable 1.8M
Single-link DVI-D Cable 1.8M
Dual-link DVI-D Cable 5M
Single-link DVI-D Cable 5M
Dual-link DVI-D Cable 10M
Single-link DVI-D Cable 10M
RS-232 Cable 1.8M
DVI (Male) to HDMI(Female) converter
DVI (Female) to HDMI (Male) converter

◆ Ordering Information

Model Name	Description
V1400P	High resolution video wall controller, 1 Dual-link DVI-D input to 4 DVI outputs, 4x1/3x1/1x4/1x3 display modes