

Sunlight Readable LED LCD Kits

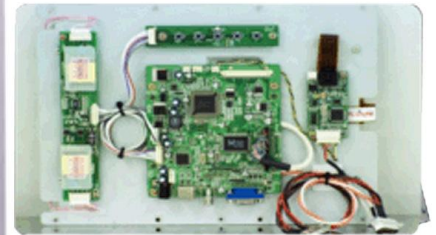
40" Wide Sunlight Readable LED
LCD Kits

Model: JPDW4000-KIT



Features

- Sunlight Readable
- High Contrast Ratio
- Wide Temperature
- Low Power Consumption
- Optional Touch Systems
- VGA to WXGA



Specifications:

PANEL

| | |
|------------------------------|---|
| Display Type | LCD + LED Driver + AD/OSD Board |
| LCD Display | 40" TFT LCD Module |
| Base Panel Supplier | Samsung Display |
| Base Panel Model | LTI40HA02 |
| Display Color | 8-bits, 16.7M colors |
| Display Area | 885.6 x 498.15 mm |
| Brightness | 1,200 nits |
| Resolution | 1920 X 1080 |
| Contrast Ratio | 3000 : 1 |
| Pixel Pitch (mm) | 0.46125 x 0.46125 |
| Viewing Angle | 89°/89°(H) 89°/89°(V) |
| Response Time | 8ms (GTG) |
| Sync | LVDS |
| Power Consumption | TBD |
| Temperature | Operation 0°C~+50°C Storage -20°C~+60°C |
| Dimension(WxHxD)mm | |
| Lamp Lifetime (HR) | 50,000 |
| Control(AD) Board (Optional) | N/A |
| OSD Button | 5 Key |
| OSD Menu | Brightness Contrast H/V Position Color Phase Clock... |
| LED Driver | JL400 |
| Weight | TBD |
| Optional | Transflective tech Glass Bonding Touch |

Specifications are subject to change without notice

| | |
|------------------------------|---|
| Control(AD) Board (Optional) | Standard VGA + DVI + Audio(Optional) Option VGA + DVI + Composite + S-Video + Audio(Optional) |
| OSD Button | 5 Key Power Switch Select(+,-) Down Up Menu |

