

Sunlight Readable LED LCD Kits

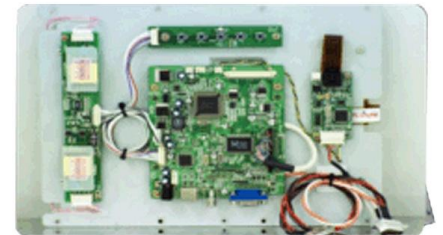
7.0" Wide Sunlight Readable LED
LCD Kits

Model: JPDW0700-KIT-A



Features

- Sunlight Readable
- High Contrast Ratio
- Wide Temperature
- Low Power Consumption
- Optional Touch Systems
- VGA to WVGA



Specifications:

PANEL

Display Type	LCD + LED Driver + AD/OSD Board
LCD Display	7.0" TFT LCD Module
Base Panel Supplier	PVI
Base Panel Model	PM070WL3
Display Color	6-bits, 262,144 colors
Display Area	152.4 x 91.44 mm
Brightness	800 nits
Resolution	800 x 480 (WVGA)
Contrast Ratio	700 : 1
Pixel Pitch (mm)	0.1905 x 0.1905
Viewing Angle	60°/60°(H) 40°/45°(V)
Response Time	40ms (Tr+Tf)
Sync	LVDS
Power Consumption	TBD
Temperature	Operation -30°~+85° Storage -40°~+100°
Dimension(WxHxD)mm	166.30 x 105.30 x 10.70
Lamp Lifetime (HR)	50,000
Control(AD) Board (Optional)	N/A
OSD Button	5 Key
OSD Menu	Brightness Contrast H/V Position Color Phase Clock...
LED Driver	JL07W
Weight	365 g
Optional	Transflective tech Glass Bonding Touch

Specifications are subject to change without notice

Control(AD) Board (Optional)	Standard VGA + DVI + Audio(Optional) Option VGA + DVI + Composite + S-Video + Audio(Optional)
OSD Button	5 Key Power Switch Select(+,-) Down Up Menu