

# Sunlight Readable LED LCD Kits

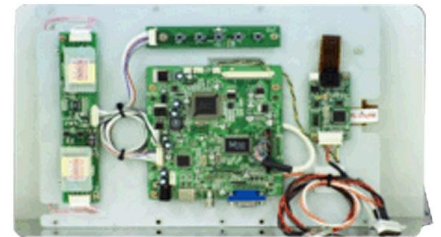
## 8.4" Sunlight Readable LED LCD Kits

Model: JPD0840-KIT



### Features

- Sunlight Readable
- High Contrast Ratio
- Wide Temperature
- Low Power Consumption
- Optional Touch Systems
- VGA to SVGA



### Specifications:

#### PANEL

Display Type	LCD + LED Driver + AD/OSD Board
LCD Display	8.4" TFT LCD Module
Base Panel Supplier	AUO
Base Panel Model	G084SN03 V1
Display Color	6-bits, 16.7M colors
Display Area	170.40 x 127.80 mm
Brightness	1000 nits
Resolution	800 x 600 (SVGA)
Contrast Ratio	600 : 1
Pixel Pitch (mm)	0.2130 x 0.2130
Viewing Angle	80°/80°(H) 60°/80°(V)
Response Time	30ms (Tr+Tf)
Sync	LVDS
Power Consumption	TBD
Temperature	Operation -30°~+85° Storage -30°C~+85°C
Dimension(WxHxD)mm	203.00 x 142.50 x 5.70
Lamp Lifetime (HR)	50,000
Control(AD) Board (Optional)	N/A
OSD Button	5 Key
OSD Menu	Brightness Contrast H/V Position Color Phase Clock...
LED Driver	JL084
Weight	300 g
Optional	Transflective tech Glass Bonding Touch

#### Specifications are subject to change without notice

Control(AD) Board (Optional)	Standard VGA + DVI + Audio(Optional) Option VGA + DVI + Composite + S-Video + Audio(Optional)
OSD Button	5 Key Power Switch Select(+,-) Down Up Menu