

PROGRAMMABLE TACTICAL AWARENESS CONTROLLER

15" TFT AM LCD XGA 1024x768 (2) RGB Video Input, (1) RGB Output
(4) Composite Video Input, Tactile Button OSD User Interface



Model: DTT1500R4C

Highly ruggedized display offers Programmable Bezel Keys (ASCII or HEX code via RS-232 or RS-422 protocol) for control of external systems and/or internal display features. Multiple video and computer inputs (DVI-I, RS-170, VGA) and multiple mounting options allow for seamless integration within any rugged system.

STANDARD FEATURES

- User Programmable Bezel Keys (20), RS-232/RS-422
 - Internal and/ or External Use
- Composite Video Inputs (4), PIP Capable
- Composite Video Output (1)
- Auto Sensing NTSC, PAL Formats
- DVI-I/VGA Inputs (2)
- SVGA Resolution (800x600)
- MIL-C Power*
- LED Backlight (3000:1 Dimming Ratio)
- Anti-Reflective and Anti-Glare Treatments
- Enhanced Sunlight Readability
- IP67/NEMA 6 Enclosure (Sealed Connectors*)
- 15.0" TFT AMLCD
- MIL-STD-461, 704, 810, 1275



* Cables not included

Programmable Button Interface Features:

- Integrated Bezel Key Assignment/Naming Capability
- Computer-based software available for integration of existing code

Optional Features:

- Resistive Touch Screen (USB or RS-232 Interface)
- XGA Display Resolution (1024x768)
- Night Vision Compatible – Monochrome Red/Green
- NVIS MIL-STD-3009 Class B White Compliant
- Remote Backlight Control (via Serial Command)

MOUNT OPTIONS



Corner



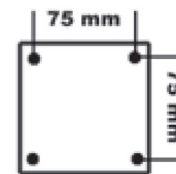
Panel



RAM



Side



VESA

SPECIFICATIONS:

LCD SIZE	RESOLUTION	LUMINANCE	VIEWING ANGLE	CONTRAST RATIO	MAXIMUM POWER CONSUMPTION
15.0" TFT AMLCD	XGA (1024x768)	800 nits	160° (H) x 140° (V)	800:1	40 Watts
TECHNICAL SPECIFICATIONS					
Display	8-bit color, 16,777,216 colors. TFT AMLCD (Thin-Film Transistor Active-Matrix Liquid-Crystal Display)				
Dimming Ratio	3000:1				
Video Inputs	Composite Video (4), Auto Sensing NTSC, PAL-BGHID Formats; DVI-I/VGA (2)				
Video Outputs	Composite Video (1)				
Housing	Milled Aluminum, Black Hard Anodized				
Mount Options	Corner, Panel, RAM, VESA (75mm), Side (12.1"-15.0" sizes); Quoted individually.				
Wide Range DC Power Input†	10-36 VDC (12, 24, 28 VDC nominal)				
Power Conditioning	Protected against Internal Short Circuit, Load Dump, Over Voltage and Reverse Polarity				
ENVIRONMENTAL SPECIFICATIONS					
IP Rating	IP67 (NEMA 6 Submersible)				
Operating Temperature	-40°C to 71°C (-40°F to 160°F); (-20°C (-4°F) with Touch Option)				
Storage Temperature	-51°C to 71°C (-60°F to 160°F)				
Humidity	0-100%				
Altitude	45,000 ft.				
MILITARY SPECIFICATIONS					
MIL-STD-461	EMI	MIL-STD-810	Method 512, Immersion		
MIL-STD-704	Aircraft Power Requirements	MIL-STD-810	Method 512; Immersion		
MIL-STD-810	Method 500; Altitude	MIL-STD-810	Method 513; Acceleration		
MIL-STD-810	Method 501; I & II; High Temperature	MIL-STD-810	Method 514; Procedure I, II, V, VI; General Vibration		
MIL-STD-810	Method 502; I & II; Low Temperature	MIL-STD-810	Method 516; Procedure I, Functional Shock		
MIL-STD-810	Method 503; Temperature Shock	MIL-STD-810	Method 520; Temp, Humidity, Vibration, and Altitude		
MIL-STD-810	Method 505; Solar Radiation	MIL-STD-1275	Vehicle Power Requirements		
MIL-STD-810	Method 506; Rain	MIL-STD-1472	Thermal Contact Hazard		
MIL-STD-810	Method 507; Humidity	MIL-STD-3009	NVIS Compatible (Optional)		
MIL-STD-810	Method 508; Fungus	MIL-PRF-22885	Sunlight Readability for Push Buttons		
MIL-STD-810	Method 509; Salt/Fog	MIL-A-8625	Standard Finish, Type III, Class 1 & 2		
MIL-STD-810	Method 510; Blowing Sand and Dust	MIL-PRF-22750	Painted Finish, Optional, Minimum Quantity Required		
MIL-STD-810	Method 511; Explosive Atmosphere	MIL-DTL-26842	(and 38999) Connector, Qualified		

**Specifications subject to change without notice, not responsible for typographical errors.*

* - Cables not included.

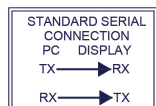
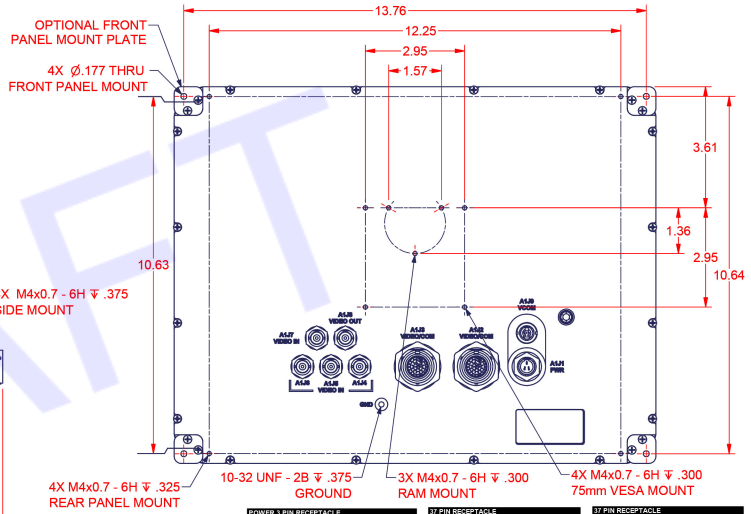
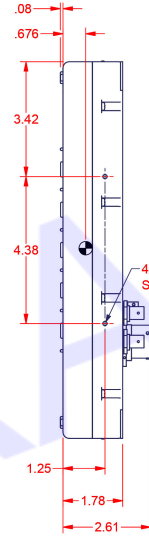
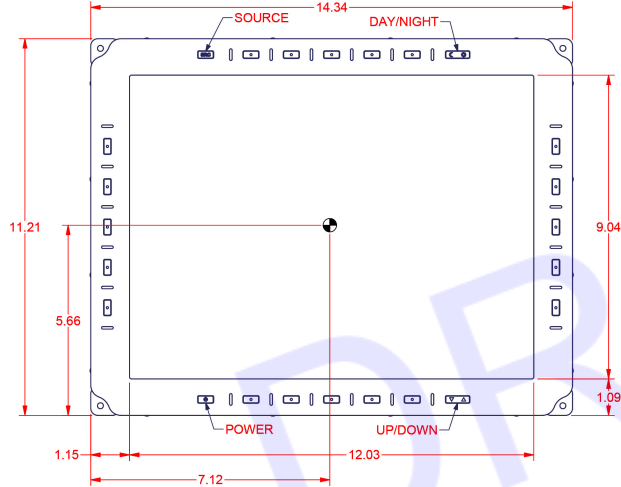
† - Power range specified covers momentary environmental fluctuations generally found in a mobile environment while display is operating. For power initialization and continual operation, nominal voltages are required.

MECHANICAL DRAWINGS:

This is subject to change without Notice. Final Drawings Will be Provided for Approval after Order.

THIS IS AN ELECTRONICALLY CONTROLLED AND ISSUED DOCUMENT. HARD COPY DOCUMENTS MUST BE VERIFIED AGAINST ELECTRONIC REVISION PRIOR TO USE.

CENTER OF GRAVITY



10 PIN RECEPTACLE MIL-DTL-26482 SERIES I CONNECTOR		17 PIN RECEPTACLE MIL-DTL-38999 SERIES I CONNECTOR		17 PIN RECEPTACLE MIL-DTL-38999 SERIES I CONNECTOR	
AL11 PWR	SIGNAL	AL12 VIDEO COM	SIGNAL	AL13 VIDEO COM	SIGNAL
A	2B VOLT GND	1	DW-RKD	1	DW-RKD
B	2B VOLT R/W	2	DW-RKD	2	DW-RKD
C	N/C	3	DW-RKD GND	3	DW-RKD GND
Amphenol #	71-5331/71-53P (3-pin power)	4	DW-DDC SCL	4	DW-DDC SCL
Mat# #	PT06B33SR (141247)	5	DW-DDC SDA	5	DW-DDC SDA
Strain #	100002	6	DW-RKNC	6	DW-RKNC
Cable Assy#	900022	7	DW-RX+	7	DW-RX+
		8	DW-RX-	8	DW-RX-
		9	DW-RXN GND	9	DW-RXN GND
		10	DW-HSV	10	DW-HSV
		11	DW-RKND GND	11	DW-RKND GND
		12	DW-HPD	12	DW-HPD
		13	DW-RKD	13	DW-RKD
		14	DW-RKD+	14	DW-RKD+
		15	DW-RKD GND	15	DW-RKD GND
		16	DW-RKNC	16	DW-RKNC
		17	DW-RKDC	17	DW-RKDC
		18	DW-RKND GND	18	DW-RKND GND
		19	DW-RN RED	19	DW-RN RED
		20	DW-RN GREEN	20	DW-RN GREEN
		21	DW-RN BLUE	21	DW-RN BLUE
		22	DW-RKNC	22	DW-RKNC
		23	ANALOG GND	23	ANALOG GND
		24	DIGITAL GND	24	DIGITAL GND
		25	USB TOUCH	25	USB TOUCH
		26	USB+ TOUCH	26	USB+ TOUCH
		27	DIGITAL GND	27	DIGITAL GND
		28	RS-232 RXD TOUCH	28	RS-232 RXD TOUCH
		29	RS-232 TxD TOUCH	29	RS-232 TxD TOUCH
		30	DIGITAL GND	30	DIGITAL GND
		31	RS-232 TRD COM	31	RS-232 TRD COM
		32	RS-232 RXD COM	32	RS-232 RXD COM
		33	DIGITAL GND	33	DIGITAL GND
		34	RS-422 TR COM	34	RS-422 TR COM
		35	RS-422 TX COM	35	RS-422 TX COM
		36	RS-422 RX COM	36	RS-422 RX COM
		37	RS-422 R+ COM	37	RS-422 R+ COM
		38	RS-422 R- COM	38	RS-422 R- COM
		39	RS-422 TX COM	39	RS-422 TX COM
		40	RS-422 RX COM	40	RS-422 RX COM
		41	RS-422 R+ COM	41	RS-422 R+ COM
		42	RS-422 R- COM	42	RS-422 R- COM
		43	RS-422 TX COM	43	RS-422 TX COM
		44	RS-422 RX COM	44	RS-422 RX COM
		45	RS-422 R+ COM	45	RS-422 R+ COM
		46	RS-422 R- COM	46	RS-422 R- COM
		47	RS-422 TX COM	47	RS-422 TX COM
		48	RS-422 RX COM	48	RS-422 RX COM
		49	RS-422 R+ COM	49	RS-422 R+ COM
		50	RS-422 R- COM	50	RS-422 R- COM
		51	RS-422 TX COM	51	RS-422 TX COM
		52	RS-422 RX COM	52	RS-422 RX COM
		53	RS-422 R+ COM	53	RS-422 R+ COM
		54	RS-422 R- COM	54	RS-422 R- COM
		55	RS-422 TX COM	55	RS-422 TX COM
		56	RS-422 RX COM	56	RS-422 RX COM
		57	RS-422 R+ COM	57	RS-422 R+ COM
		58	RS-422 R- COM	58	RS-422 R- COM
		59	RS-422 TX COM	59	RS-422 TX COM
		60	RS-422 RX COM	60	RS-422 RX COM
		61	RS-422 R+ COM	61	RS-422 R+ COM
		62	RS-422 R- COM	62	RS-422 R- COM
		63	RS-422 TX COM	63	RS-422 TX COM
		64	RS-422 RX COM	64	RS-422 RX COM
		65	RS-422 R+ COM	65	RS-422 R+ COM
		66	RS-422 R- COM	66	RS-422 R- COM
		67	RS-422 TX COM	67	RS-422 TX COM
		68	RS-422 RX COM	68	RS-422 RX COM
		69	RS-422 R+ COM	69	RS-422 R+ COM
		70	RS-422 R- COM	70	RS-422 R- COM
		71	RS-422 TX COM	71	RS-422 TX COM
		72	RS-422 RX COM	72	RS-422 RX COM
		73	RS-422 R+ COM	73	RS-422 R+ COM
		74	RS-422 R- COM	74	RS-422 R- COM
		75	RS-422 TX COM	75	RS-422 TX COM
		76	RS-422 RX COM	76	RS-422 RX COM
		77	RS-422 R+ COM	77	RS-422 R+ COM
		78	RS-422 R- COM	78	RS-422 R- COM
		79	RS-422 TX COM	79	RS-422 TX COM
		80	RS-422 RX COM	80	RS-422 RX COM
		81	RS-422 R+ COM	81	RS-422 R+ COM
		82	RS-422 R- COM	82	RS-422 R- COM
		83	RS-422 TX COM	83	RS-422 TX COM
		84	RS-422 RX COM	84	RS-422 RX COM
		85	RS-422 R+ COM	85	RS-422 R+ COM
		86	RS-422 R- COM	86	RS-422 R- COM
		87	RS-422 TX COM	87	RS-422 TX COM
		88	RS-422 RX COM	88	RS-422 RX COM
		89	RS-422 R+ COM	89	RS-422 R+ COM
		90	RS-422 R- COM	90	RS-422 R- COM
		91	RS-422 TX COM	91	RS-422 TX COM
		92	RS-422 RX COM	92	RS-422 RX COM
		93	RS-422 R+ COM	93	RS-422 R+ COM
		94	RS-422 R- COM	94	RS-422 R- COM
		95	RS-422 TX COM	95	RS-422 TX COM
		96	RS-422 RX COM	96	RS-422 RX COM
		97	RS-422 R+ COM	97	RS-422 R+ COM
		98	RS-422 R- COM	98	RS-422 R- COM
		99	RS-422 TX COM	99	RS-422 TX COM
		100	RS-422 RX COM	100	RS-422 RX COM

Drawing No.: DTT1500R4C-04252023-V1

