

RUGGED FULL IP66/NEMA4X STAINLESS STEEL CHASSIS/SURFACE MOUNT

15" Rugged Completely Sealed Full IP66/NEMA4X Stainless Steel Chassis/Surface Mount 1024x768, 250nits with JR3288LC-2NA RK3288 / RAM 2GB / Flash ROM 8GB

MODEL: CCH1500-SIP-AO



FEATURES:

- 15" industrial panel / 1024 x 768 / 250nits
- Stainless enclosures with full IP66
- AR glass
- JR3288LC-2NA / RK3288 / RAM 2GB / Flash ROM 8GB
- I/O (all connectors are waterproof connectors / 6ft long) : HDMI, LANx1, RS232 x1, USB x1, USB/OTG x1 and 12VDC with 100-240VAC power adapter
- Android 10.0 or Debian 10.0 installation

LCD SPECIFICATIONS:

DISPLAY	Viewing Size Image	15"
	Active Display Area (mm)	304.1 (H) x 228.1 (V)
	Pixel Pitch (mm)	0.297 (H) x 0.297(V)
	Resolution	1024 x 768
	Contrast Ratio	700 : 1 (typ.)
	Color	16.2M(6bits+FRC)
	Brightness	250 cd/m ²
	Viewing Angle	-70~70 (H) ; -60~60 (V)
	Recommended Resolution	1024 x 768 @ 60H, 75Hz
	Signal Connector	HDMI
POWER	Source	12VDC with 100-240VAC power adapter
	Management	VESA DPMS Compliant
OPTIONAL	Touch	Resistive, PCAP
	High Brightness	1000,1500
	Auto Dimming	YES
	POWER in	DC24V,DC 9V~36V
	Remote Control	YES
	IO	AV,VGA,DP

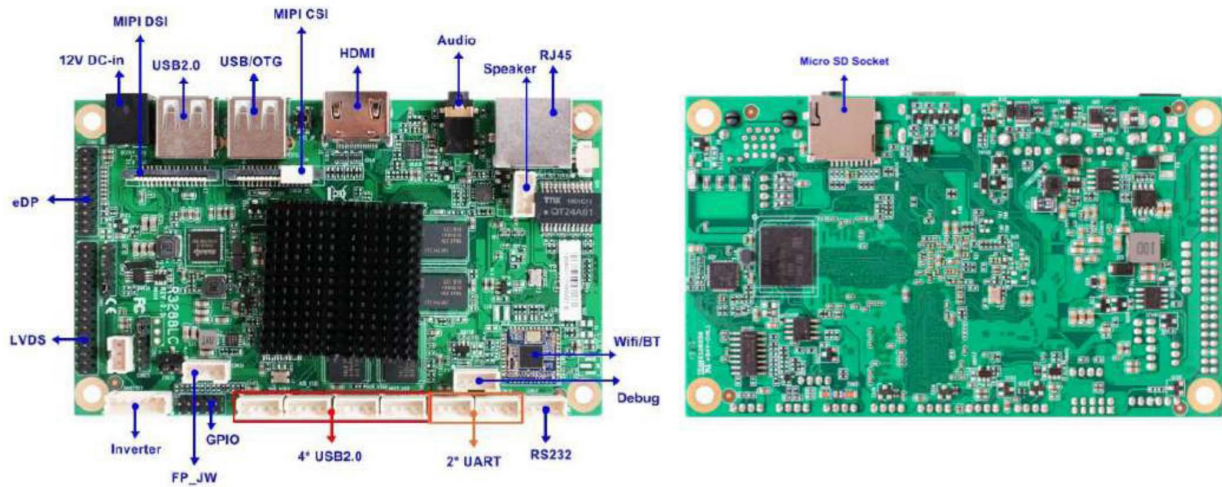
**Specifications subject to change without notice, not responsible for typographical errors.*

MB SPECIFICATIONS

- Rock Chip® ARM Cortex A17 RK3288 Quad-core 1.8GHz
- On board 1333/2GB DDR3L DRAM
- On board 8G Flash ROM up to 64GB
- 1* Realtek GbE, 1* RS232, 2* UART, 1* Debug,
- 6* USB2.0, 1* OTG (Co-lay USB2.0)
- 1* HDMI, 1* eDP, 1* 24-bits Dual CH LVDS,
- 1* MIPI DSI, 1* MIPI CSI
- 1* Micro SD up to 64GB
- Support 802.11 b/g/n 2.4G, BT-V4.1
- Support Android 10.0 and Debian10.0



I/O DIAGRAM



Processor System	Rock Chip® ARM Cortex A17 RK3288 Quad-core 1.8GHz Rock Chip® RK808-B PMU
Memory	Onboard DDR3L 1333MHz 2GB
Ethernet	1* Realtek RTL8211E-VB GbE 1* Realtek RTL8723BS 802.11b/g/n 2.4G WIFI and BT-V4.1
Storage	8GB Flash ROM (Max 64GB)
Internal connector	4* USB2.0 3* UART (CON36/39: TTL , CON47: for Debug, CON36 Co-lay RS232/485) 1* RS232 (CON37) 1* LVDS / Inverter 1* eDP 1* MIPI DSI 1* MIPI CSI 1* Speaker (3W AMP) 1* GPIO (4 bit) 1* I2C
Power	12V DC-in (PWR Con) -AT : Directly PWR on as Power input ready -ATX: Press Button to PWR on after Power input ready
Temperature	Operating: -10°C ~ 60°C Storage: -20°C ~ 70°C
Form Factor	120 * 72mm
Expansion Slot	1* Micro SD
Graphics	Mali T764 GPU,shared memory 1* HDMI (Max Resolution: 1920x1080@60Hz) 1* LVDS (Max Resolution: 1920x1200@60Hz) 1* eDP (Max Resolution: 2560x1600@60Hz) 1* MIPI DSI (Max Resolution: 1920x1080@60Hz) Support Dual Displays
Audio	2 channel HD audio: ES8316
Rear I/O	1* DC Jack (12V) 2* USB2.0 (USB1 Co-lay OTG) 1* HDMI 1* AUDIO 1* Micro SD 1* Ethernet
Watchdog Timer	From Super I/O to drag RESETCON# 256 segments (0 ~ 255 sec)
Compliance	CE, FCC, LVD, RoHS, REACH
Warranty	2 Years Limited Warranty