

Digital Signage Over IP

CAT5 Extender KVM Video/Audio Switch over IP
Intranet with DVI/VGA, Keyboard, Mouse up to
1920 x 1080 Extender Kit.

(Model: CCE900-IP-TR)

Includes CCE900IP-T: Transmitter and CCE900-IP-R: Receiver w/multi power supply support 120V-240V. All available 100M, Giga or Fiber Ethernet LAN switching HUB/router can be used to connect the Transmitter and the Receiver.

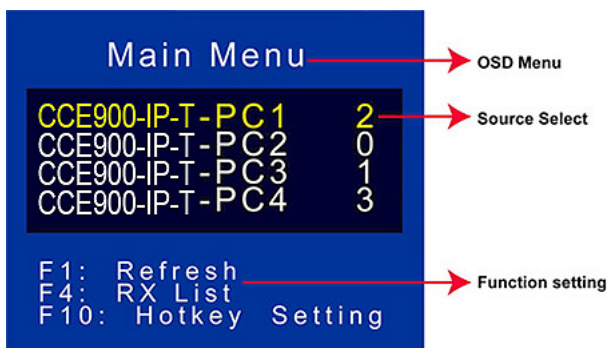


The CCE900-IP-T & CCE900-IP-R is a perfect solution to extend Audio & Video and RS-232 signals over IP Ethernet. It is useful in a wide range of digital signage applications that require one-to-many, many-to-many distribution, such as: informational displays, corporate signage, boardrooms, courtrooms, medical, military, and education.

The Transmitter connects with a PC or any device with VGA/DVI/Audio outputs. The Receiver connects with a DVI/VGA display, and optional speaker/keyboard. All available 100M, Giga or Fiber Ethernet LAN switching HUB/router can be used to connect the Transmitter and the Receiver. You don't need to have a dedicated line for the system. Just plug the transmitter and receiver into your existing Ethernet network then you can enjoy the real time high quality audio and video contents.

Features:

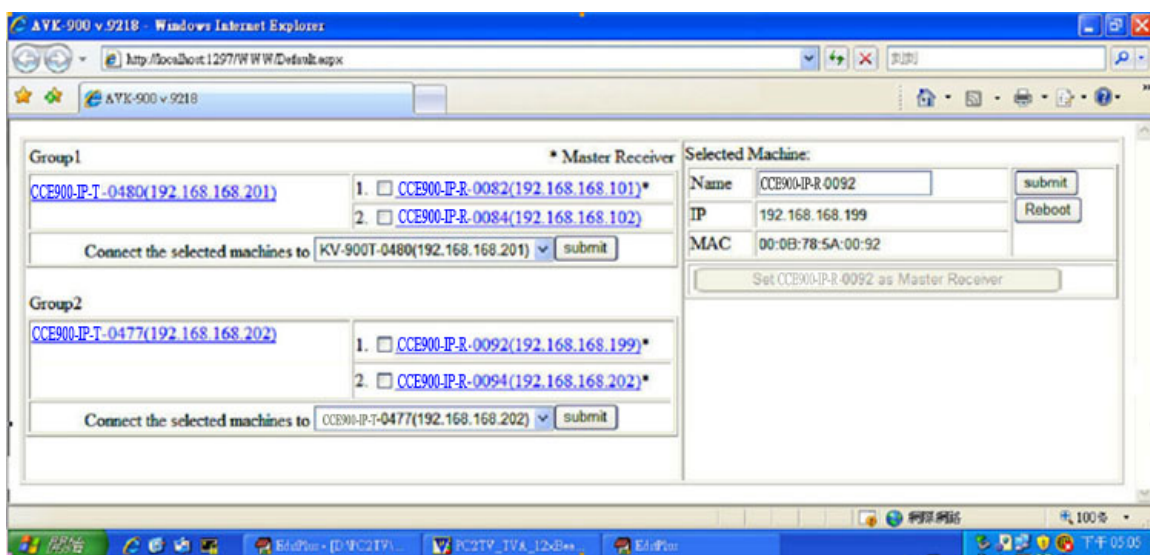
- * Just simply attach the VGA/DVI and audio to the CCE900-IP-T transmitter, it starts to encode audio/visual to the IP network.
- * Just simply attach the CCE900-IP-R receiver; it starts to decode from the IP network to the monitor and speaker.
- * Support one-to-many mode with no delay in between each receiver. Also support multiple Transmitters to multiple Receivers mode for grouping broadcast if the switching HUB has the IGMP function.
- * Support both panel button and keyboard hotkey with On Screen Display (OSD) menu on the CCE900-IP-R receiver to select any CCE900-IP-T transmitter source.



* Extends RS-232 signals (Transmit, Receive) to remote RS-232 compliant device. It is perfect for digital signage applications, such as remotely turn on/off displays, volume control..... etc.

* (Optional) Support IR bridge function, you can use the IR remote controller at CCE900-IP-R site to control the set-top box at the CCE900-IP-T site.

* An optional web-based manager software (AV-900S) can be installed on any Windows PC to manage the connection for all of Transmitters and Receivers.

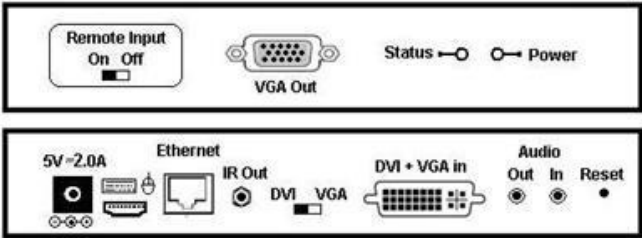


- * Support HD video and stereo audio.
- * Pure hardware design, plug-and-play, no additional software installation is required.

Specifications:

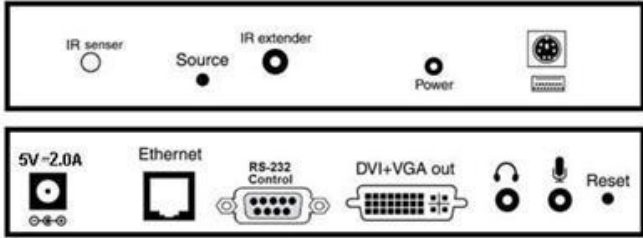
* CCE900-IP-T Transmitter

* CCE900-IP-R Receiver



Front

Rear



Model No.		CCE900-IP-T	CCE900-IP-R
Connector	DVI+VGA Input	1	1
	DVI+VGA Output	N/A	1
	VGA Output	1	1
	Power	1 x DC plug (+5V DC Input)	
	Ethernet	1 x RJ45 Female	
	Audio Input 3.5 mm	1	N/A
	Audio Output 3.5 mm	1	1
	Mic Input 3.5 mm	N/A	1
	IR Remote Control	1xIR Blaster	1xIR Receiver
	RS232-Control	-	1xDB9 Female
LED	Power	1 (Green)	
Resolution		Up to 1920 x 1080	
Cable		CAT5/5e or CAT6	
Power Consumption		DC 5.0V; 1.0A	
Environment	Operating Temp.	0~70C	
	Storage Temp.	-20~85C	
	Humidity	0~80% Non-Condensing	
Physical Properties	Housing	Metal (Black)	
	Weight	380g (0.84lbs)	420g (0.94lbs)
	Dimension	14w x 9.3D x 3.2Hcm	21w x 11.8D x 2.5Hcm

Diagram:

