

# RUGGED TRIPLE SCREEN

2U 20" Deep Triple LCD Drawer with 17.3" Wide -1920x1080 FHD Monitors. with aRGB/VGA. DVI. DP with Audio

Model: DRP3DW17TS-AM05



## FEATURES:

- Pivot Display Drawer, Series 3, Hydra
- Triple-Head Layflat 20" Depth, 2U
- Display(s): 3x17.3" Wide LED Backlit 1920x1080 (FHD) LCDs
- Controller(s): (V35xA) aRGB/VGA, DVI, DP with Audio
- Front Face: Thumb Screw w/ 3" Chrome Wire Pull Handle
- Includes 1U Top Cover Faceplate, Grounding Post

### • Custom features:

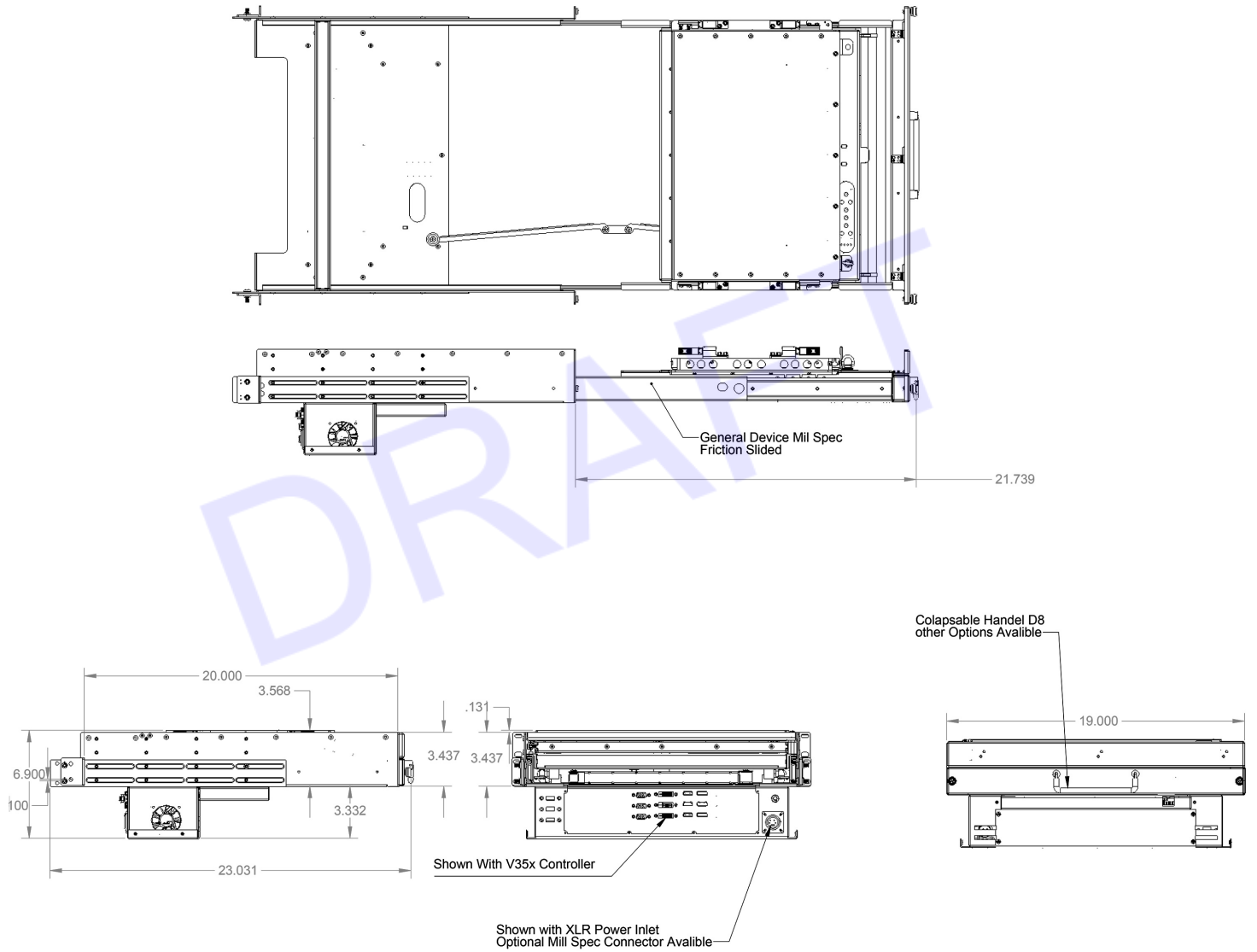
Center Screen provides Resistive Touch (USB) With New Updated Sensor and Controller 2018 Version  
Custom Man Chassis with Electronic Housing on the Bottom and Monitor on top with Custom Cable Routing

## SPECIFICATIONS:

Monitor Size	17"
Max Resolution/Refresh	1920 x 1080
Aspect Ratio	16:10
Display Colors	16.8M
Brightness (Nits cd/m2)	340
Contrast Ratio	450
Response Time (Tr/Tf) (ms)	30
Pixel Pitch (HxW)(mm)	0.191x 0.191
Power Management	EPA energy star, VESA compliance
Viewing Angle (Deg)	80L/80R/60U/70D
MTBF (Hours)	30,000-50,000
Surface Treatment	Glare and hard-coating (2h) Low reflection
Temperature Operating (C)	0 to +45
Temperature Storage (C)	-30 to +65
Altitude Operating (Ft)	70 Kpa 48 Hours
Altitude Storage (Ft)	26 Kpa 48 Hours
Humidity Operating (%RH)	5 to 90
Humidity Storage (%RH)	5 to 90
Video Connections:	aRGB/VGA, DVI, DP

# MECHANICAL DRAWINGS:

*This is subject to change without Notice. Final Drawings Will be Provided for Approval after Order.*



Drawing No.: DRP3DW17TS-AM05-04182023-V4